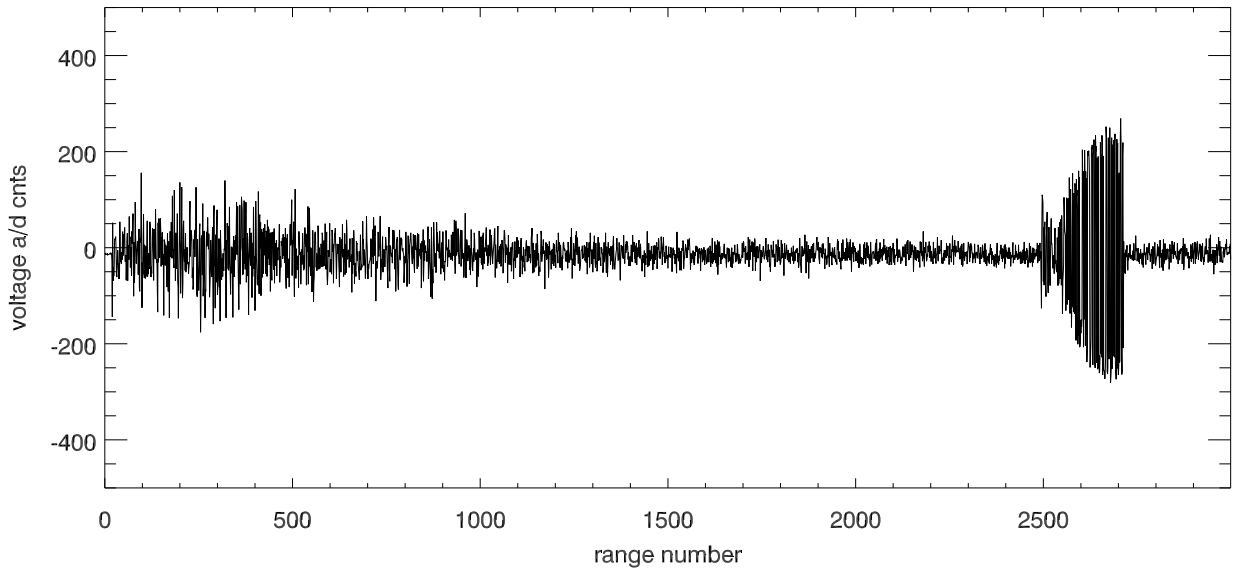
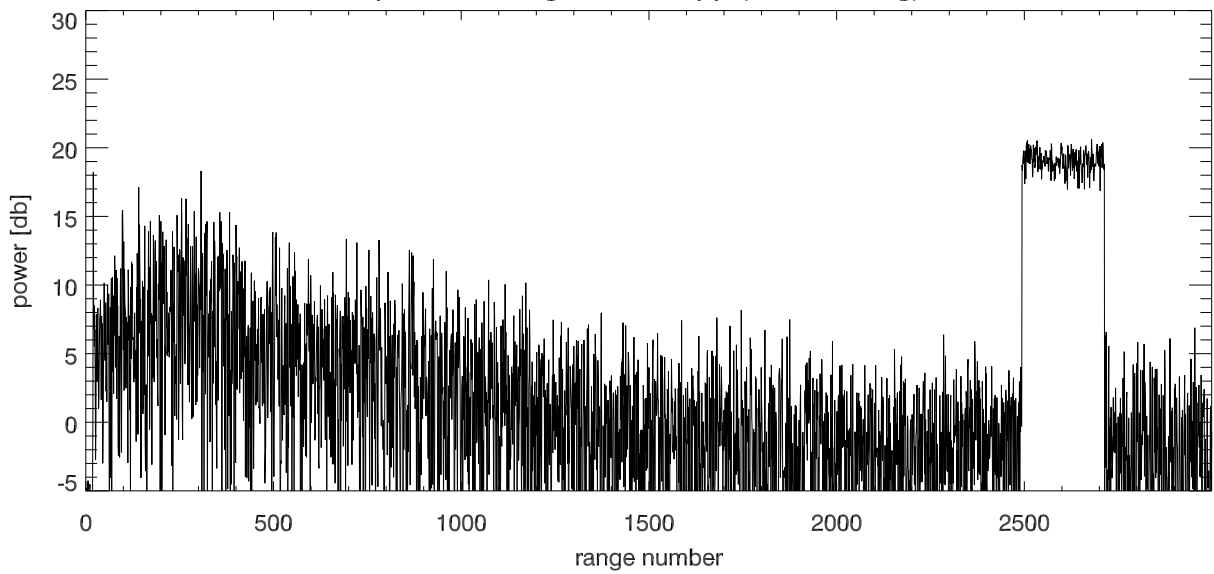


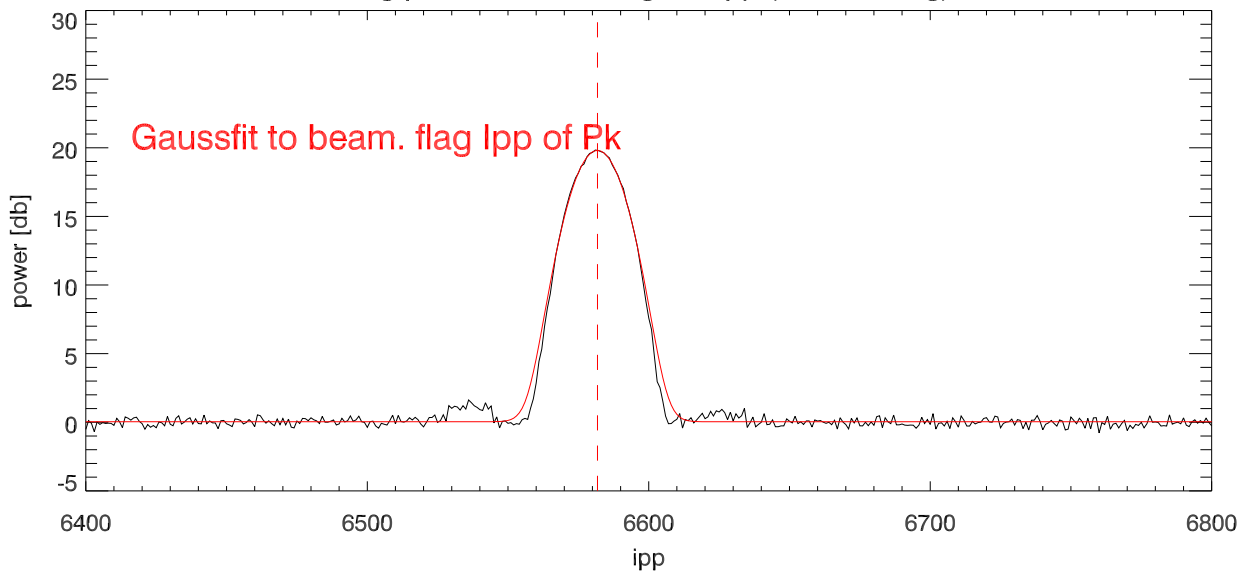
23aug16 sat04 Voltage vs range for ipp with max echo



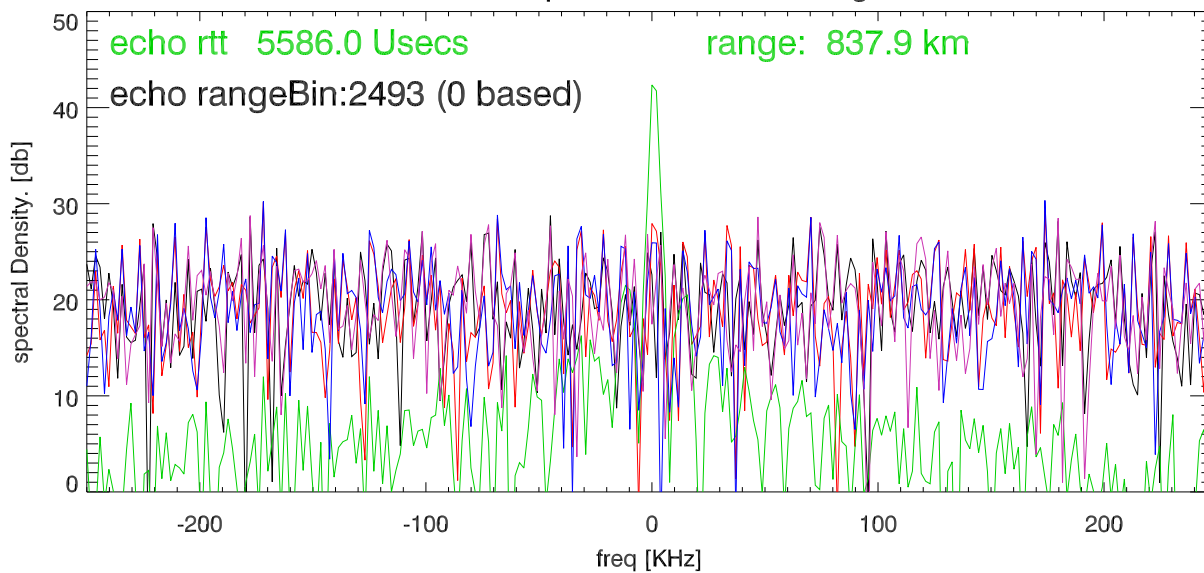
power vs range for max ipp (no decoding)



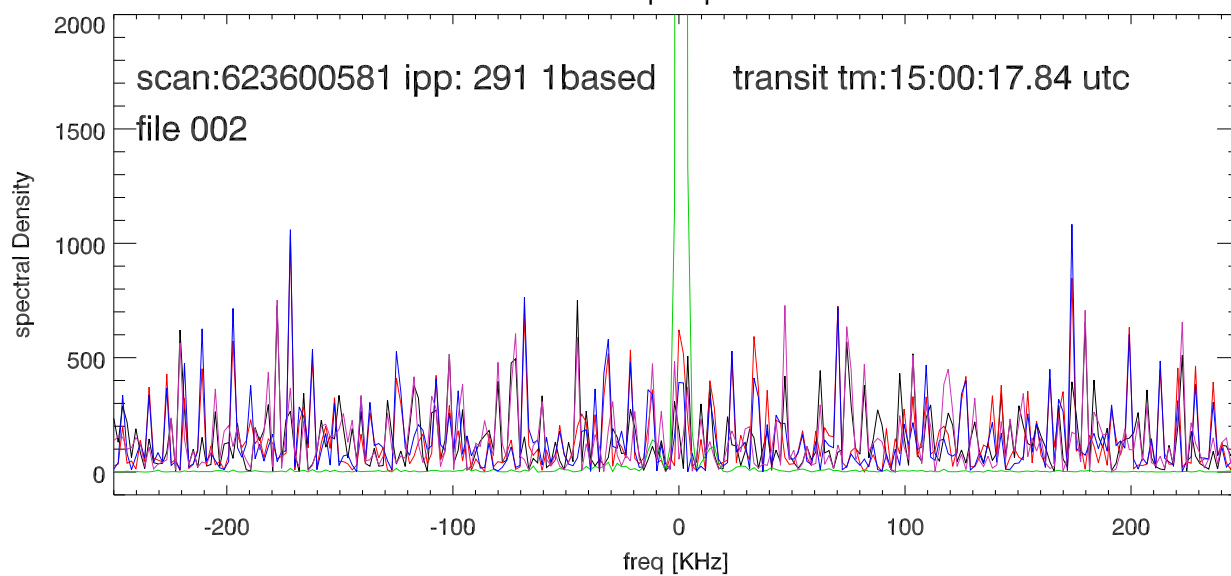
Avg power in echo range vs lpp (no decoding)



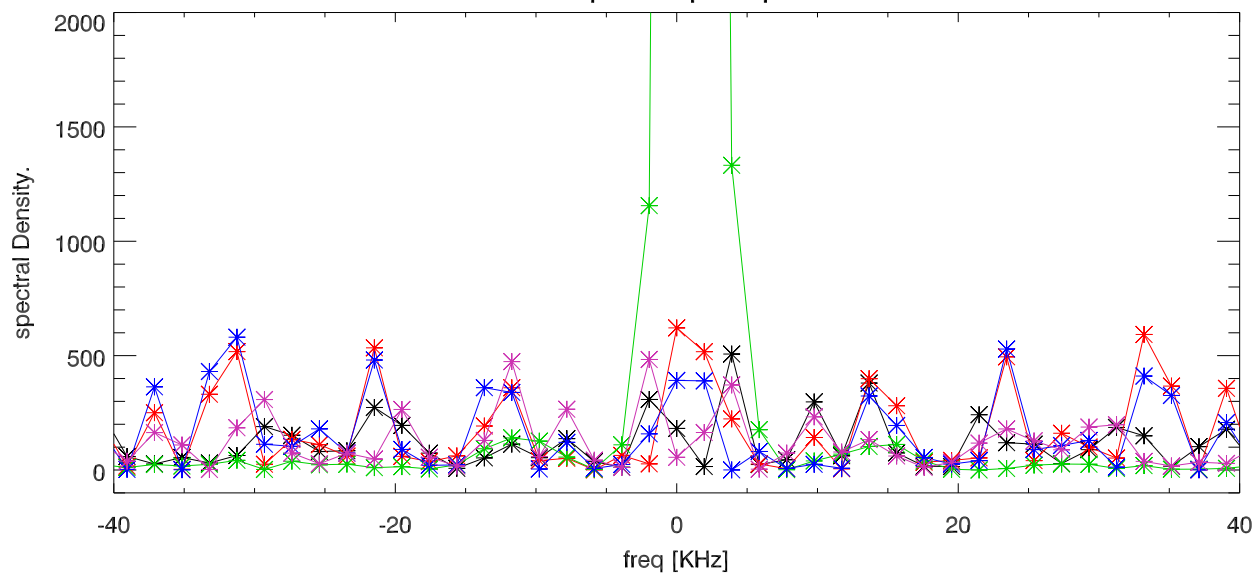
5 dced spectra around echo range



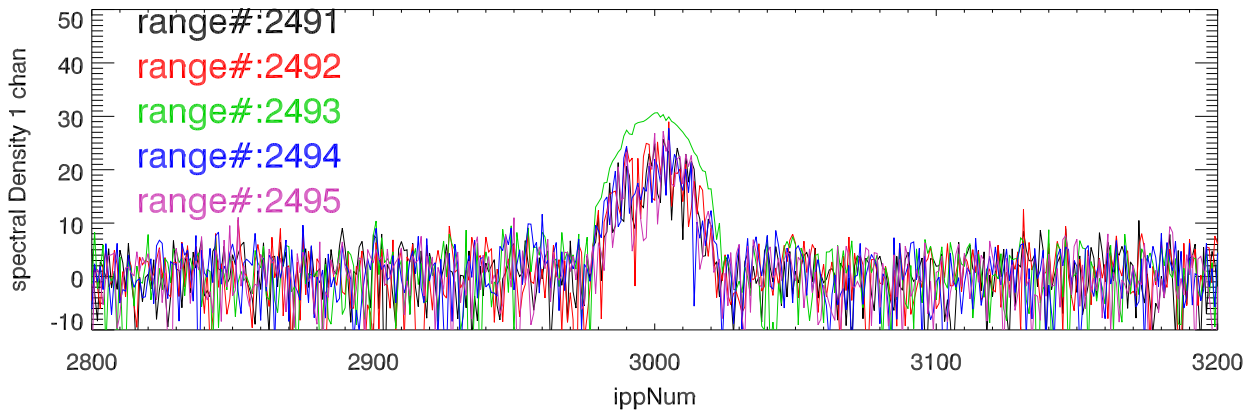
blowup in power



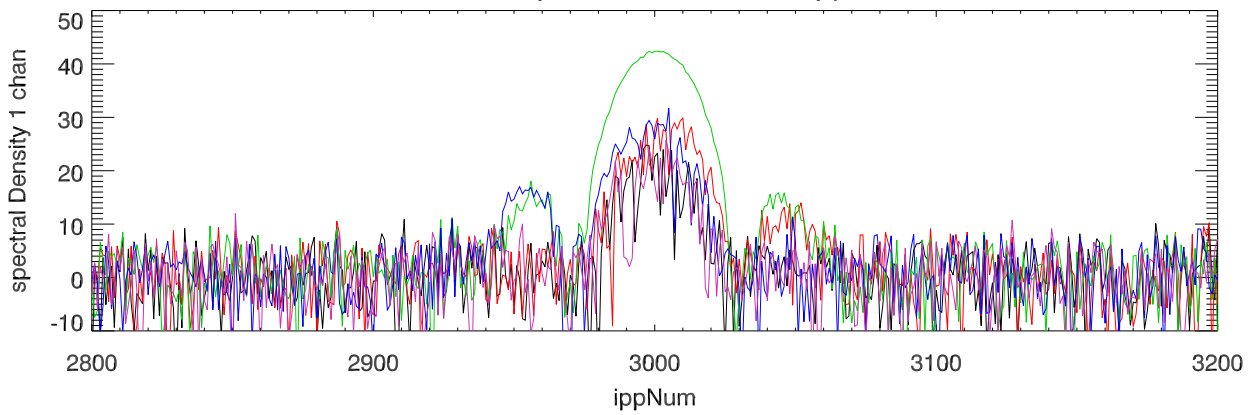
blowup in freq and power



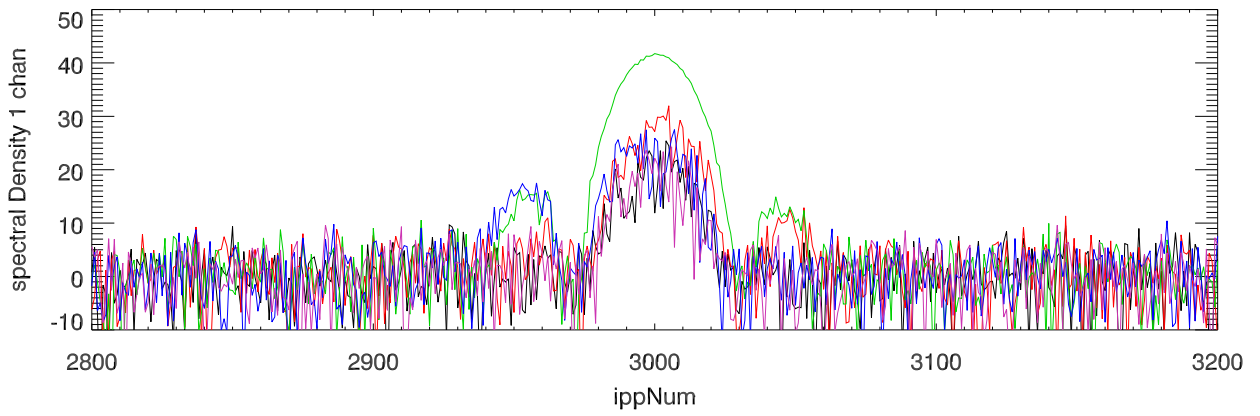
TotPwr freq Chan:-1.95 KHz. vs ipp num



TotPwr freq Chan: 0.00 KHz. vs ipp num



TotPwr freq Chan: 1.95 KHz. vs ipp num



TotPwr freq Chan: 3.91 KHz. vs ipp num

