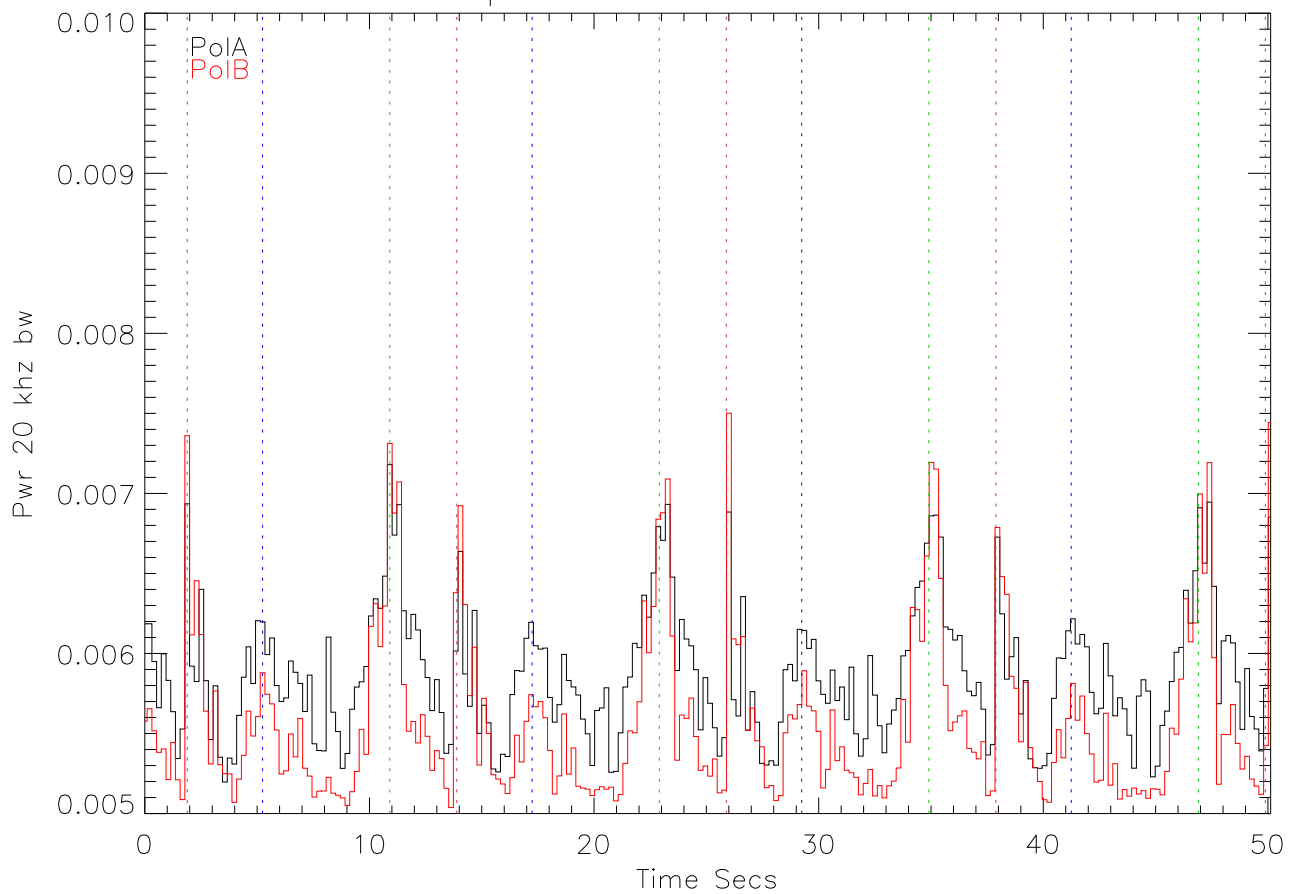
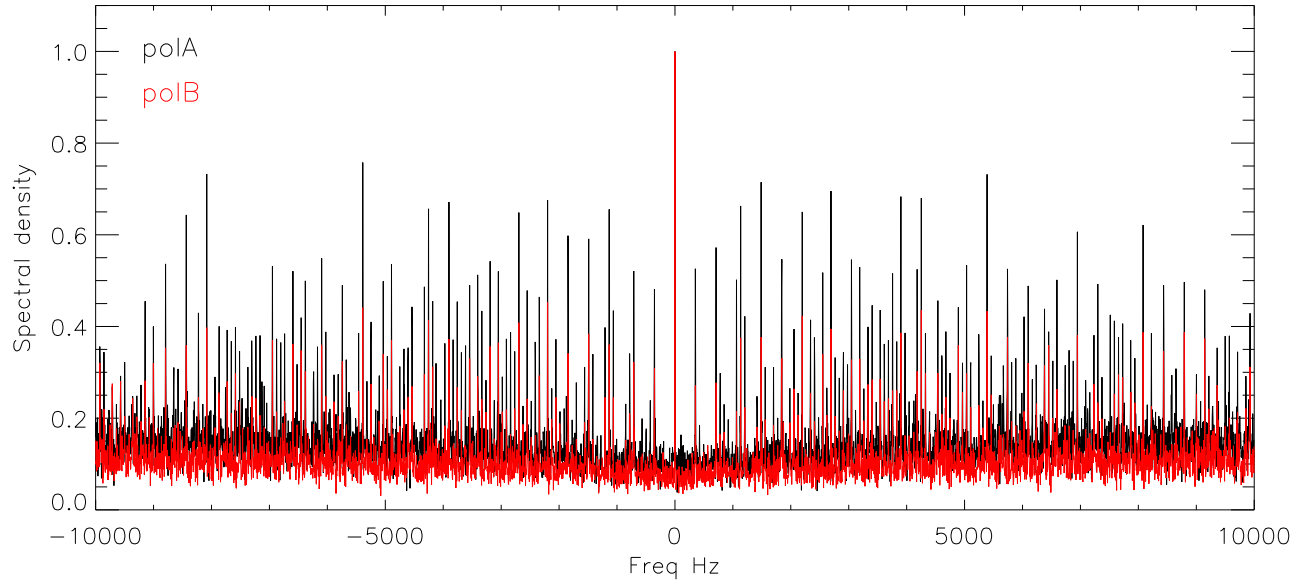


pwr in 20Khz bw vs time

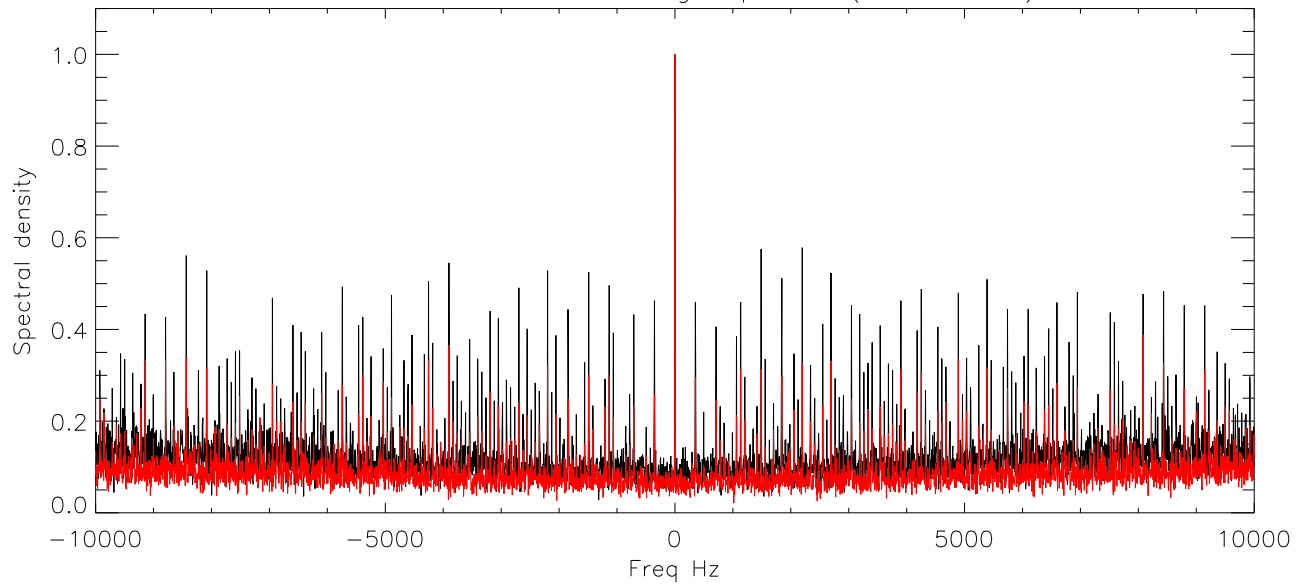


start: 1.89 secs
start: 5.24 secs
start: 10.91 secs

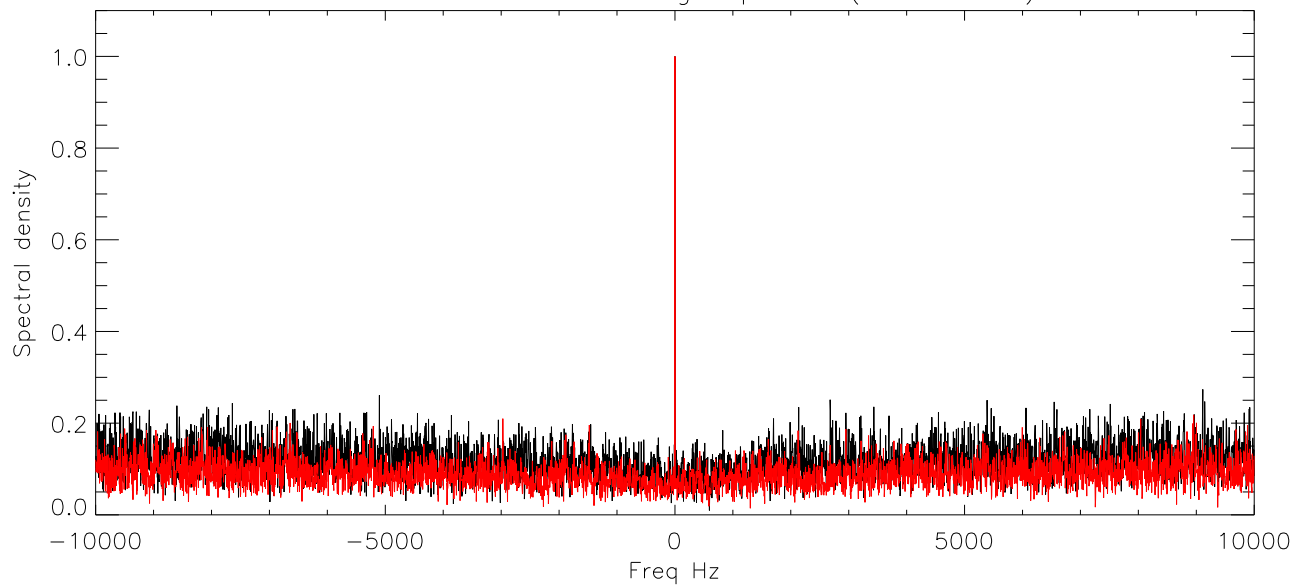
Beam 0 1 second average spectra (tm=11 secs)



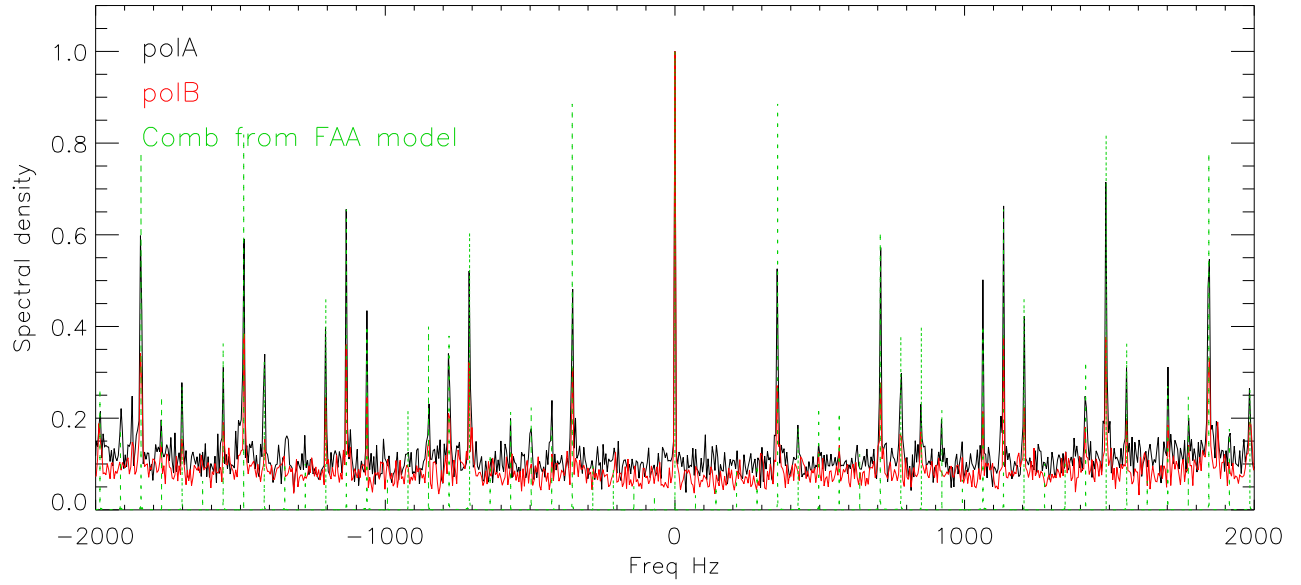
Beam 0 1 second average spectra (tm=5 secs)



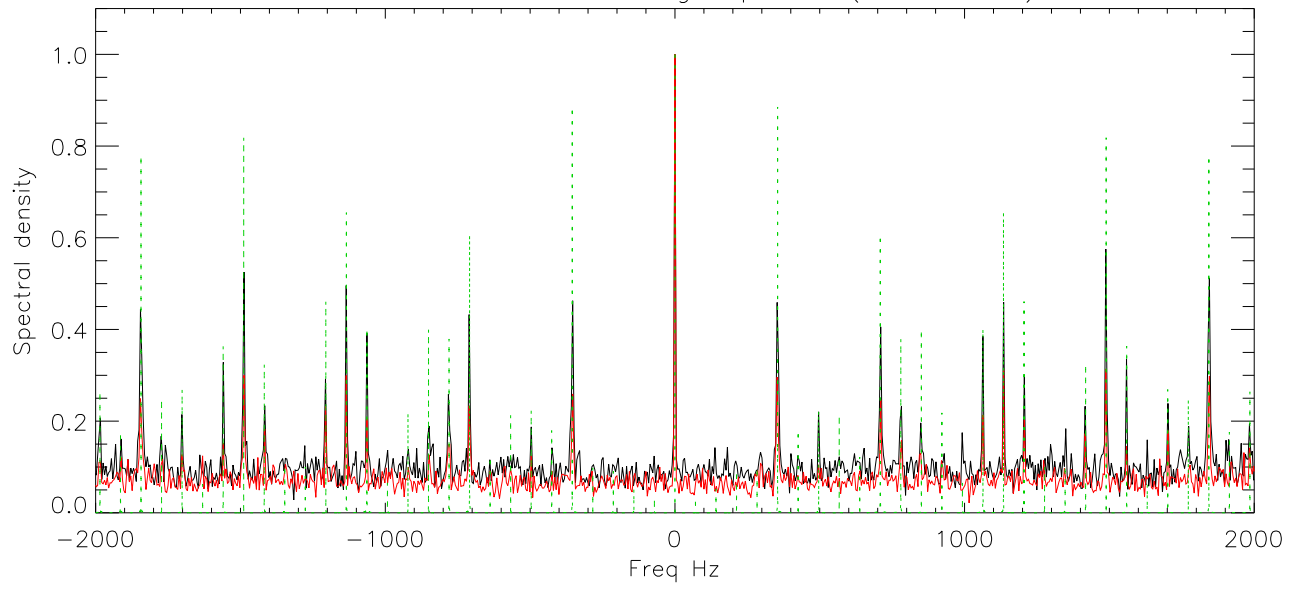
Beam 0 1 second average spectra (tm=2 secs)



Beam 0 1 second average spectra (tm=11 secs)



Beam 0 1 second average spectra (tm=5 secs)



Beam 0 1 second average spectra (tm=2 secs)

