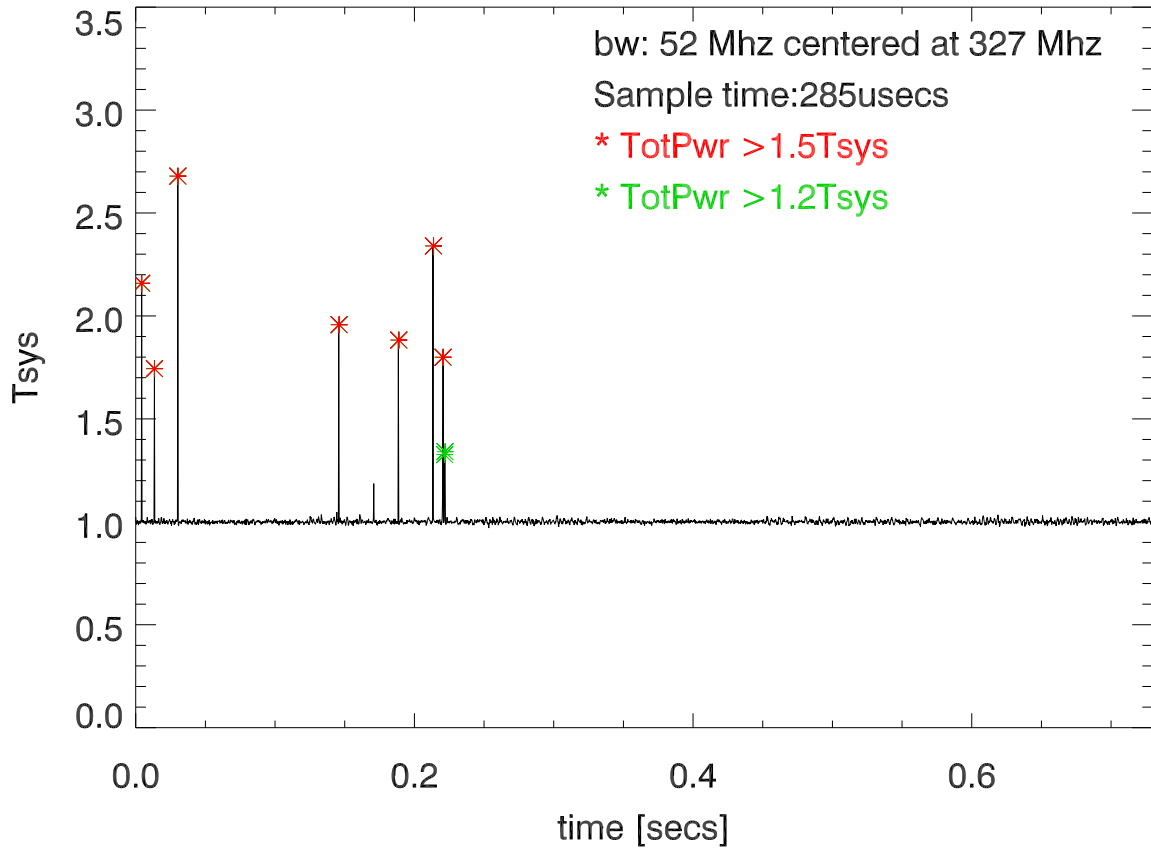
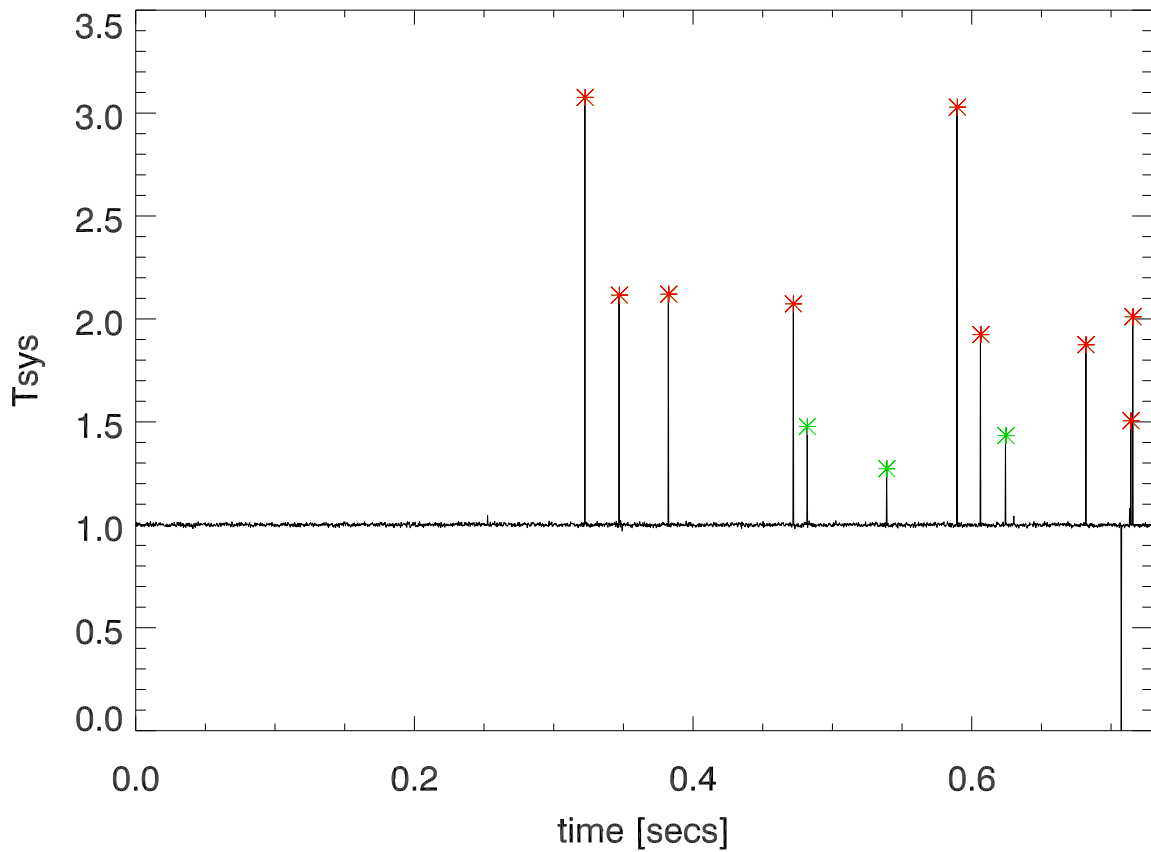


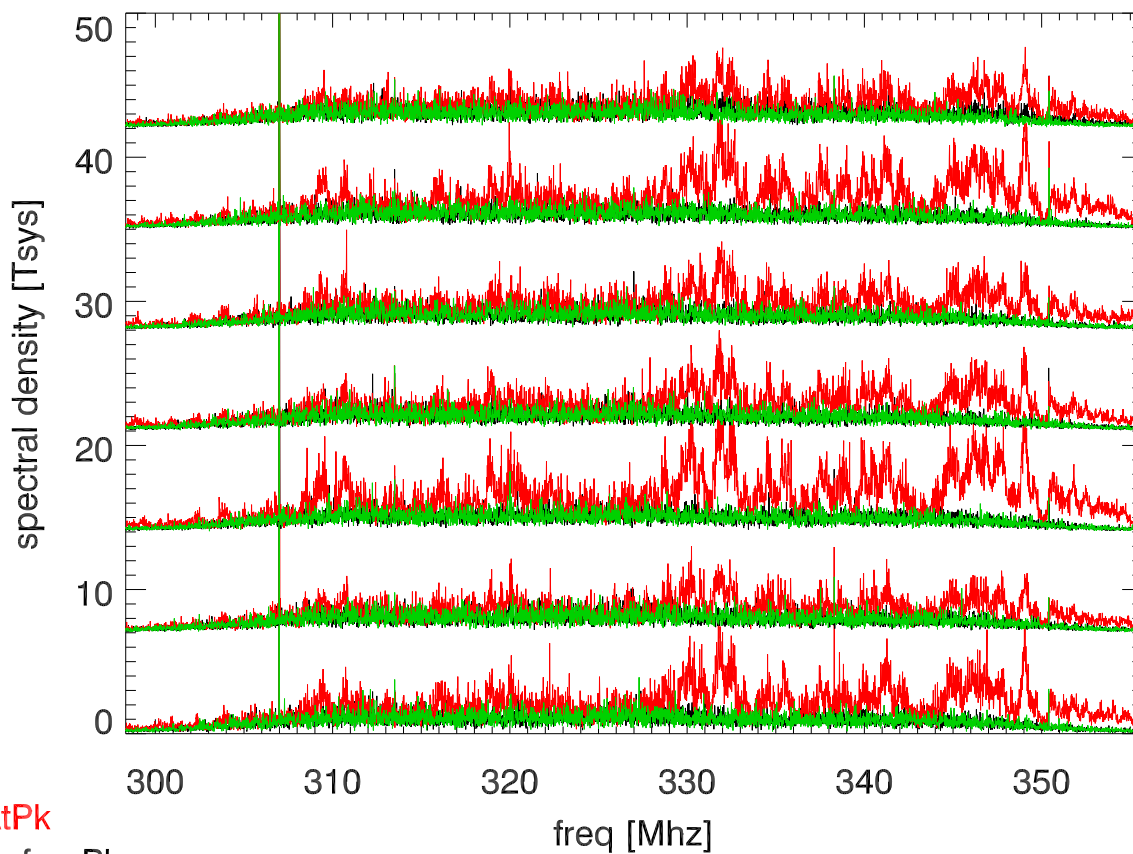
31aug11,p2558,327rcvr total pwr vs time rec 1



total pwr vs time rec 93 (67 secs after rec 1)

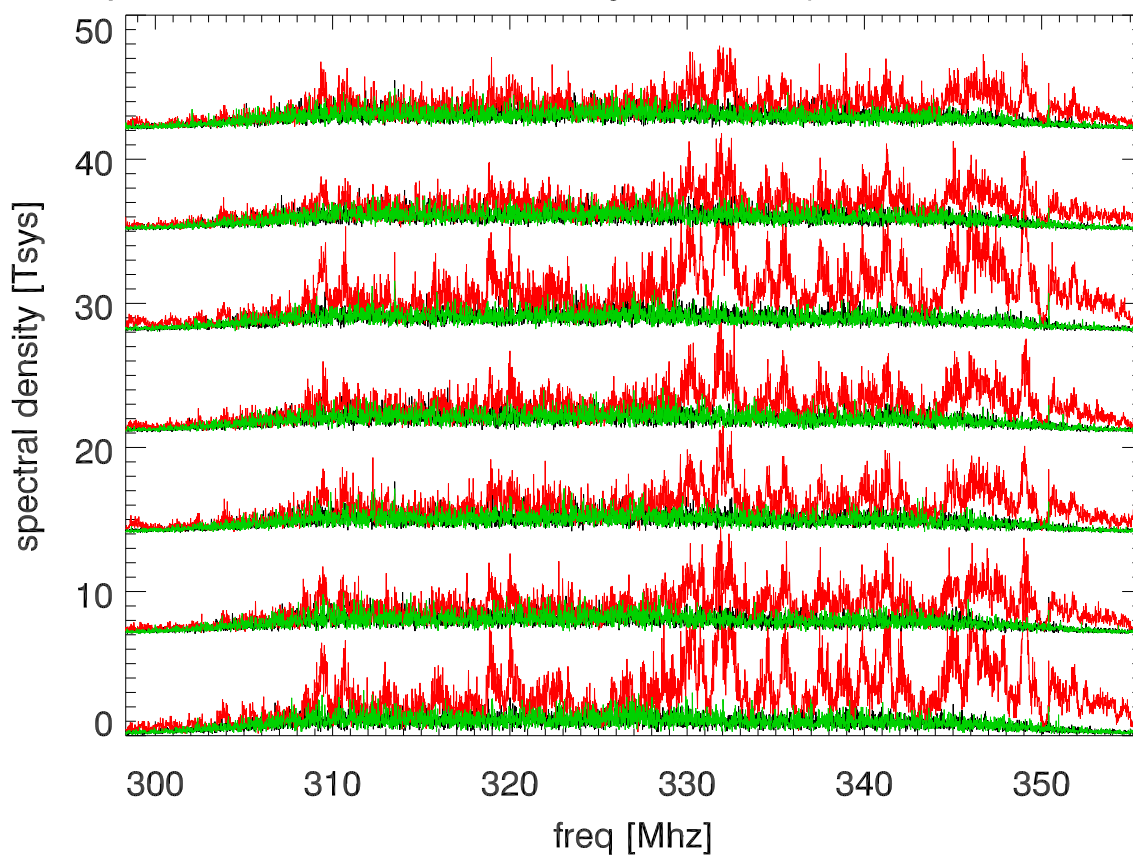


spectra for totPwr > 1.5 Tsys rec 1



spcAtPk
spcBeforePk
spcAfterePk

spectra for totPwr > 1.5 Tsys rec 93 (67 secs after rec 1)



avg spc with $t_p > 1.2$ (458 285 usec spectra in 67 secs)

