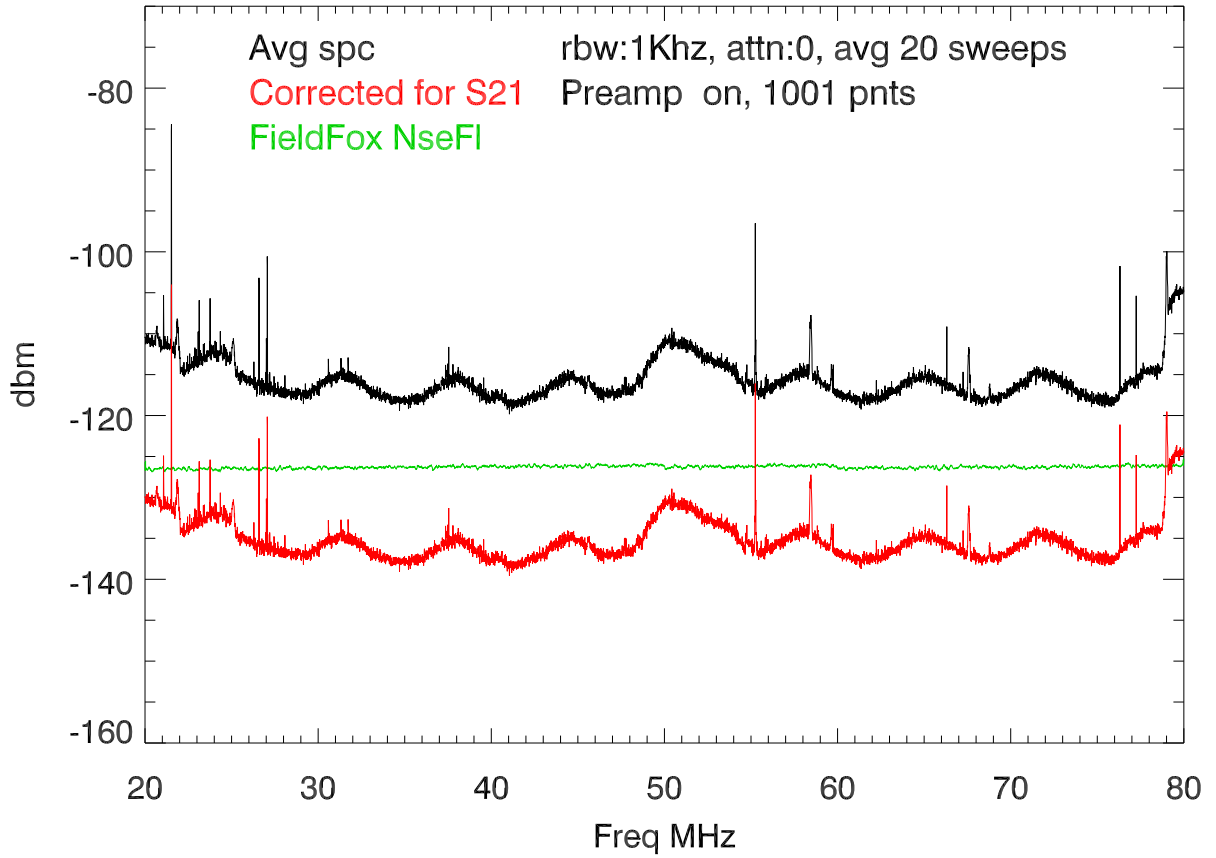
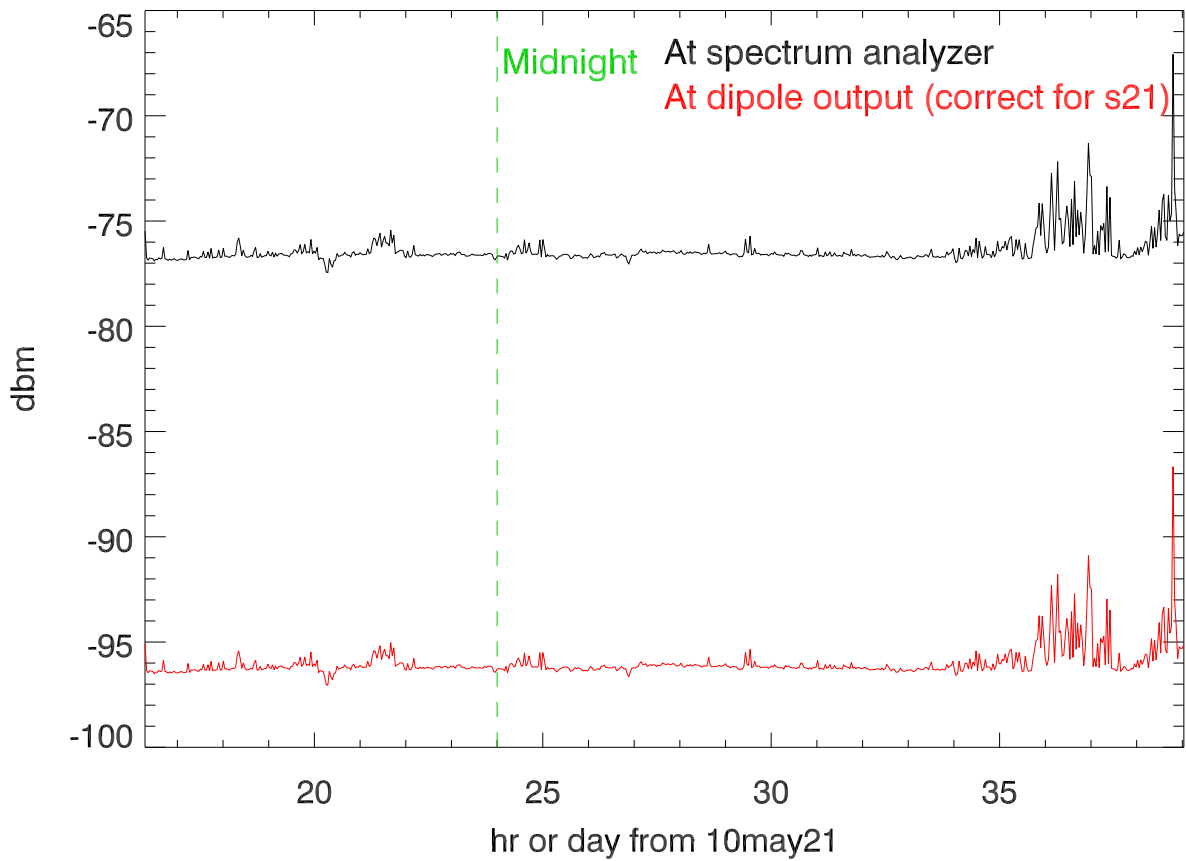


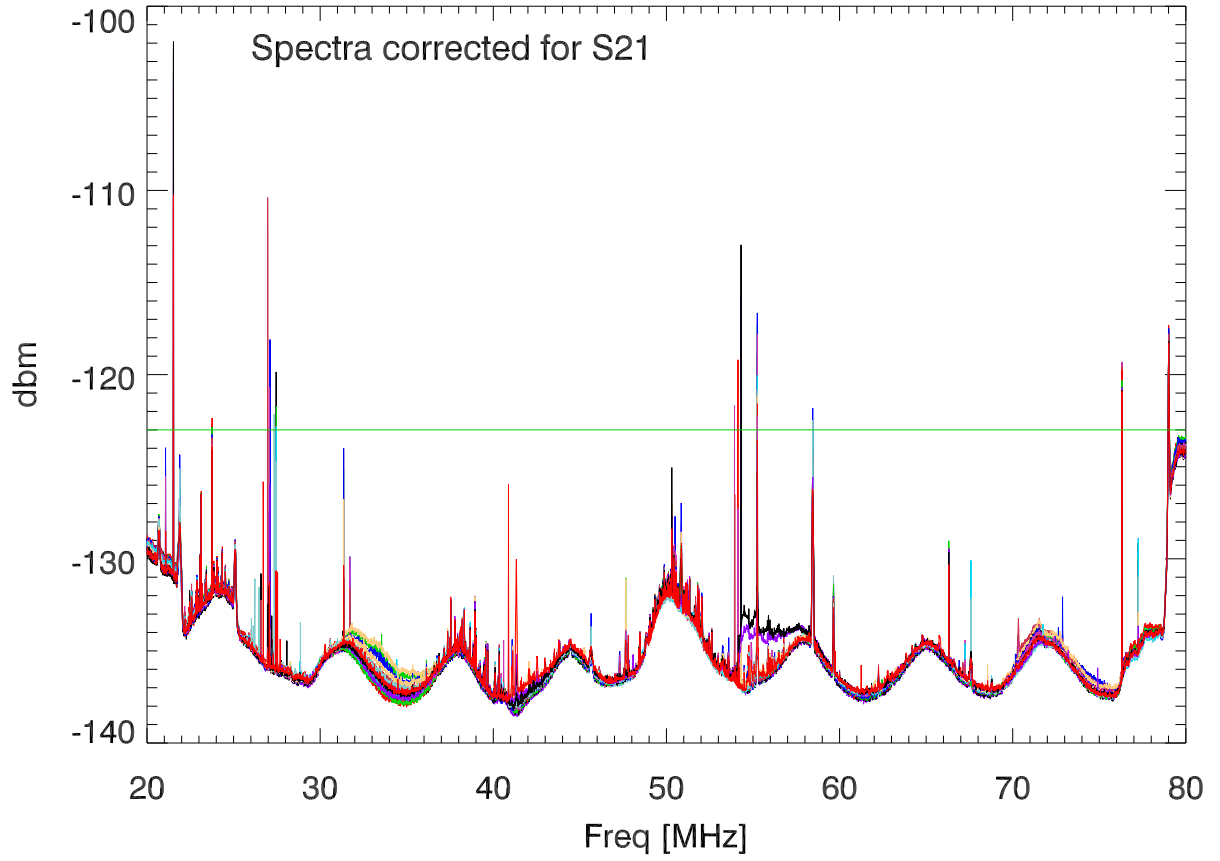
12may21 Input and S21 corrected spectra (FieldFox 9916A)



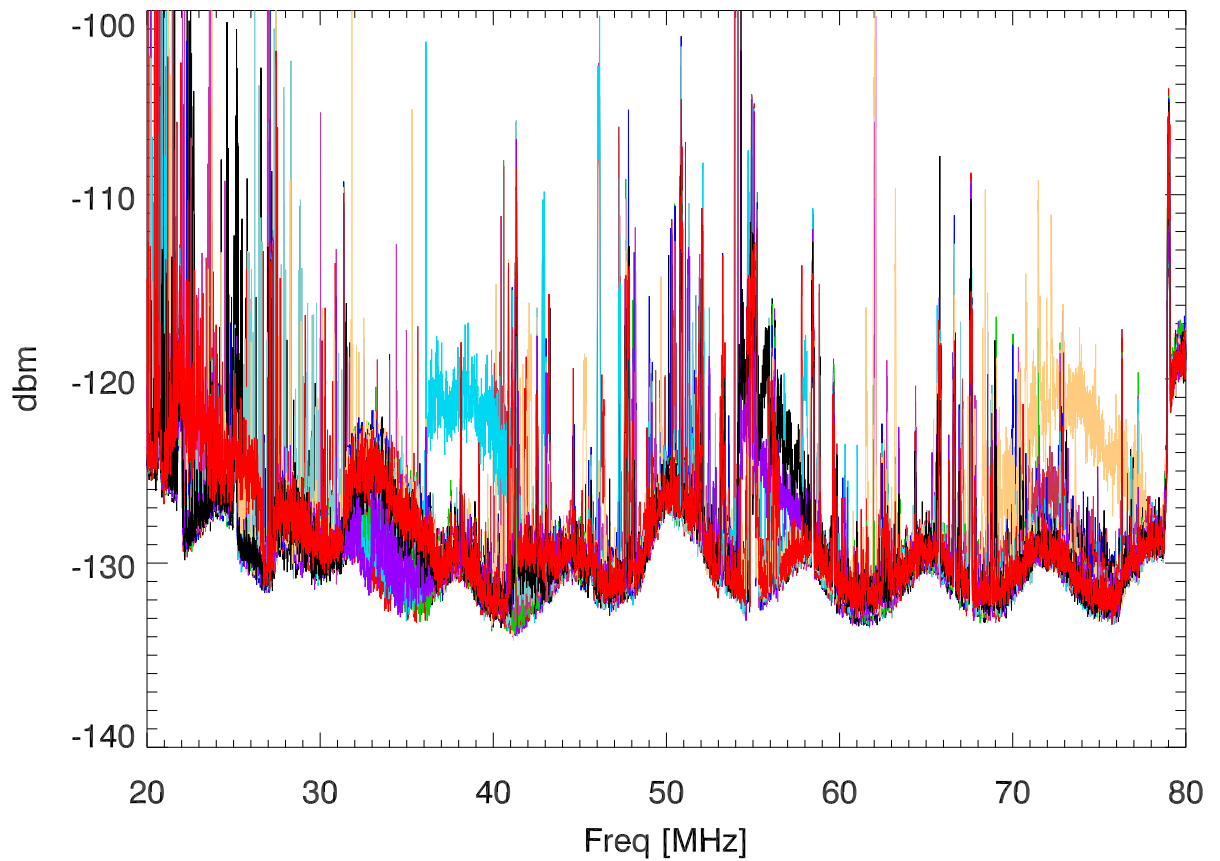
Total power vs hour of day



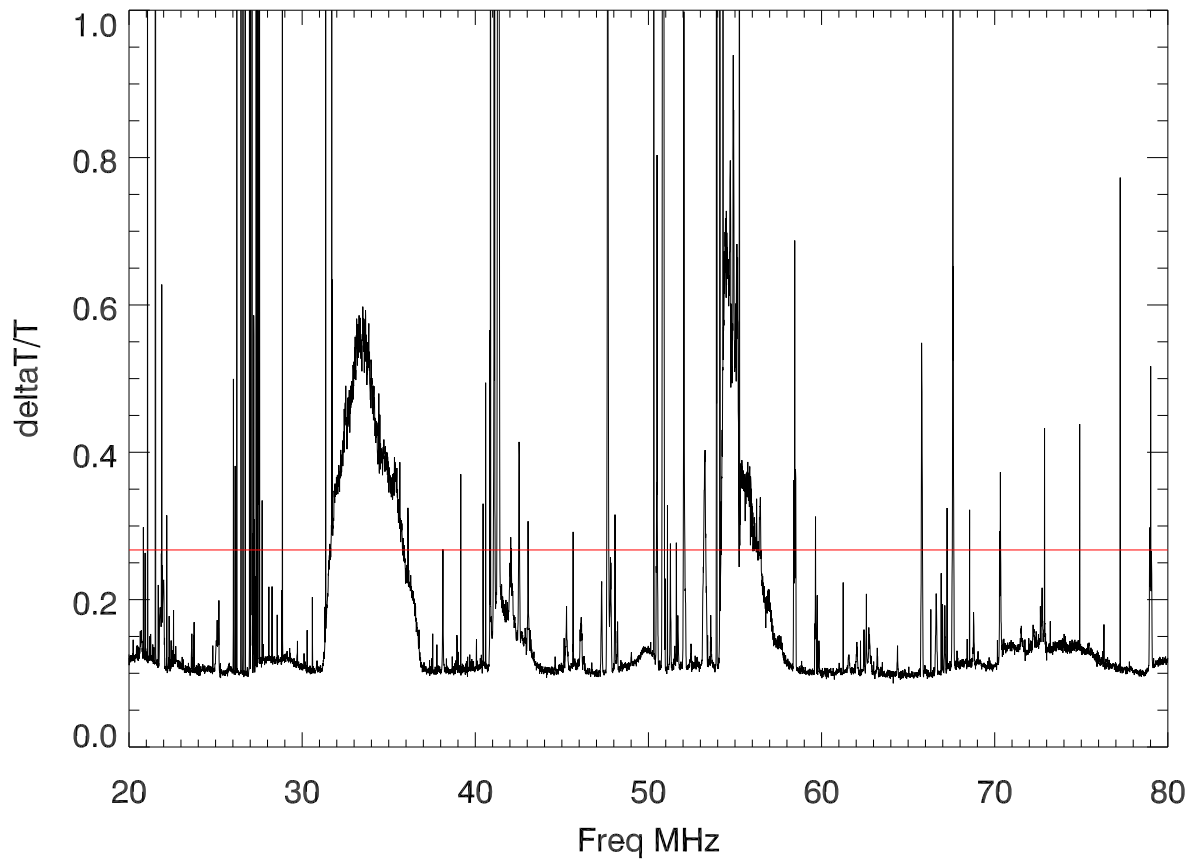
12may21 avg spectra to 1 hour steps: avg spectra



peak hold spectra by hour



rms/mean by channel for all spectra



expected rms:0.267

swpTime:.7 secs, 1001 points, 20 sweeps,tm/pnt=.014secs

rbw;1Kz, peak detector

Measured value:(median):0.116

Ratio Exp/Meas= 2.30 ratio ^ 2= 5.29