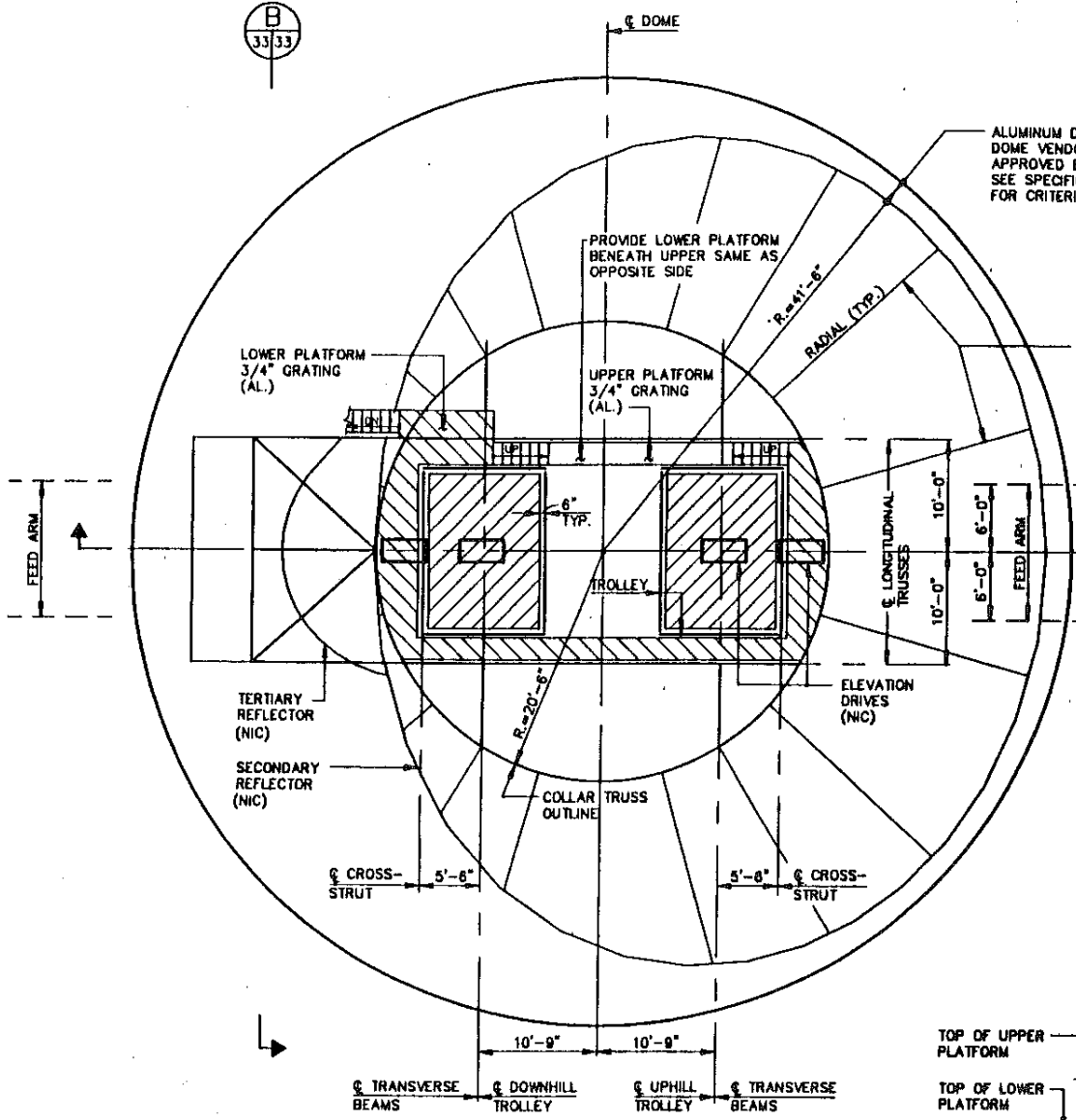


$-c \sin 8.8 - d \cos 8.8 + e = z$ c/L Rotating Feeds $x = -a - b + c \cos 8.8 - d \sin 8.8$

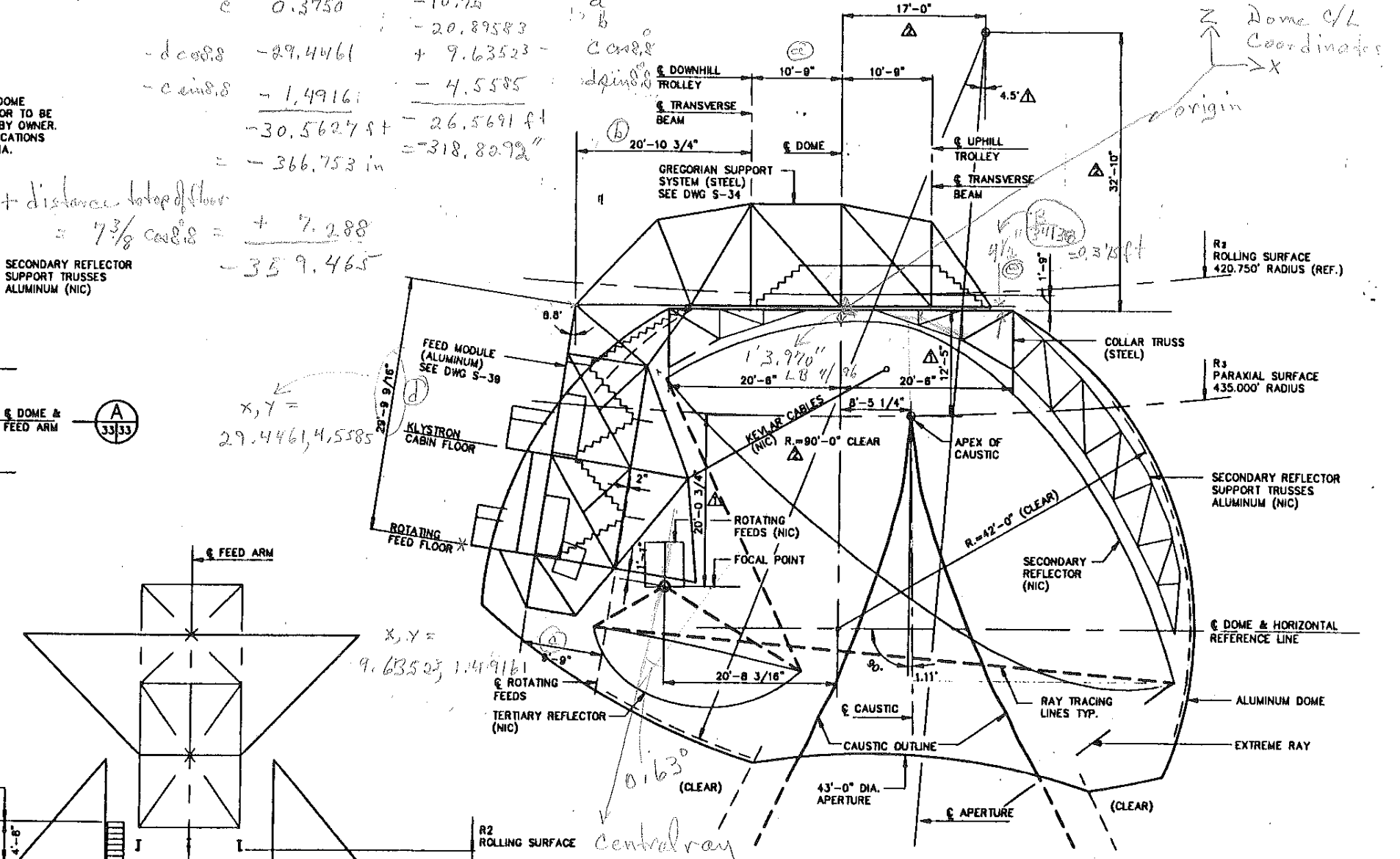
$c = 0.3750$
 $-d \cos 8.8 = -29.4461$
 $-c \sin 8.8 = -1.49161$
 $-30.5627 ft = -366.753 in$
 $+ distance \text{ to top of floor} = 7 \frac{3}{8} \cos 8.8 = + 7.288$
 -359.465

$x, y = 29.4461, 4.5585$
 $x, y = 9.63523, 1.49161$

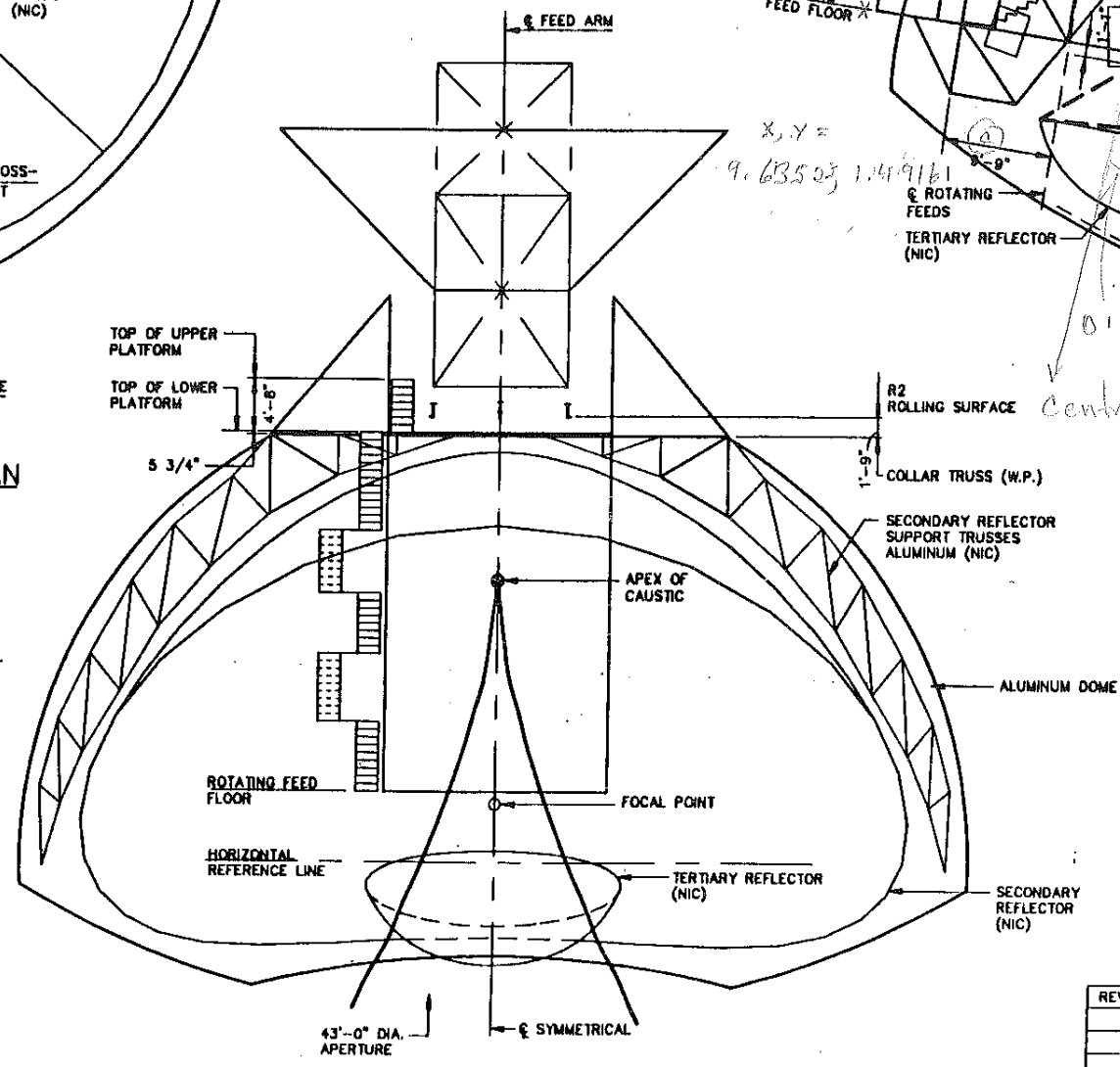
B
33/33



GREGORIAN ENCLOSURE - PLAN
SCALE: 1/8"=1'



SECTION A
SCALE: 1/8"=1'



ELEVATION B
SCALE: 1/8"=1'

REV.	DATE	DESCRIPTION
12-17-93		CHANGE BOTTOM CAP
11-29-93		CHANGE DOME RADIUS, READJUST BOTTOM CAP AND CLARIFY DIMENSIONS

NATIONAL ASTRONOMY AND IONOSPHERE CENTER
CORNELL UNIVERSITY
ARECIBO RADIO OBSERVATORY
GREGORIAN UPGRADING

GREGORIAN ENCLOSURE

AMW AMMANN & WHITNEY, CONSULTING ENGINEERS
NEW YORK, NEW YORK

DRAWN BY: R.C. APPROVED: J.V. [Signature]
 DESIGNED BY: J.G. DATE: 10-12-92
 CHECKED BY: J.V. SCALE: 1/8"=1'-0"
 DWG. NO. S-33