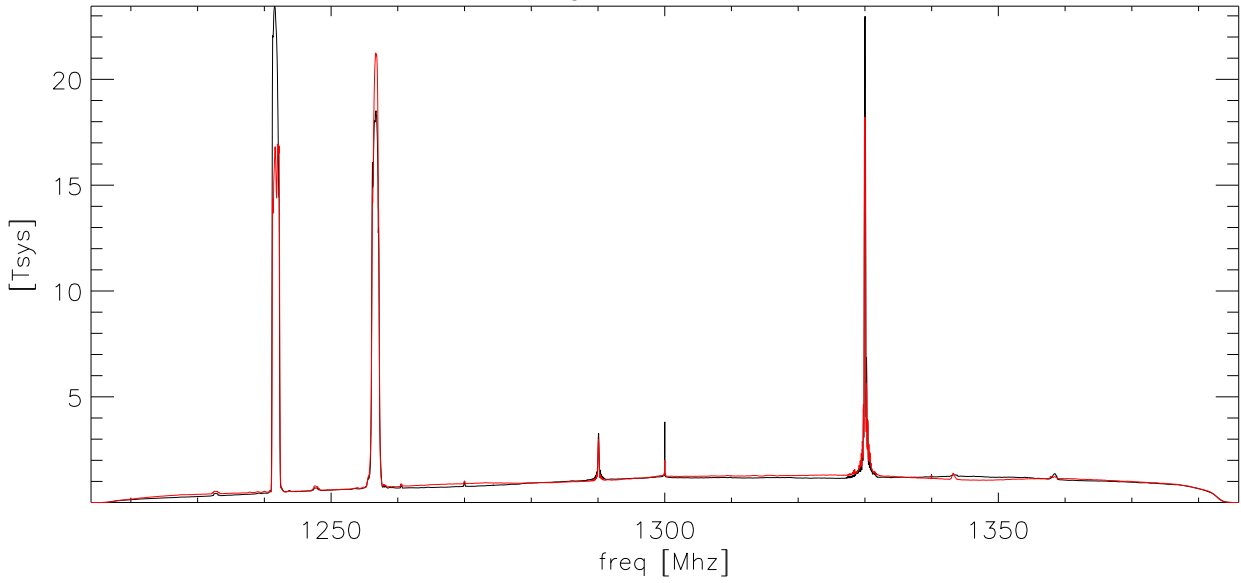
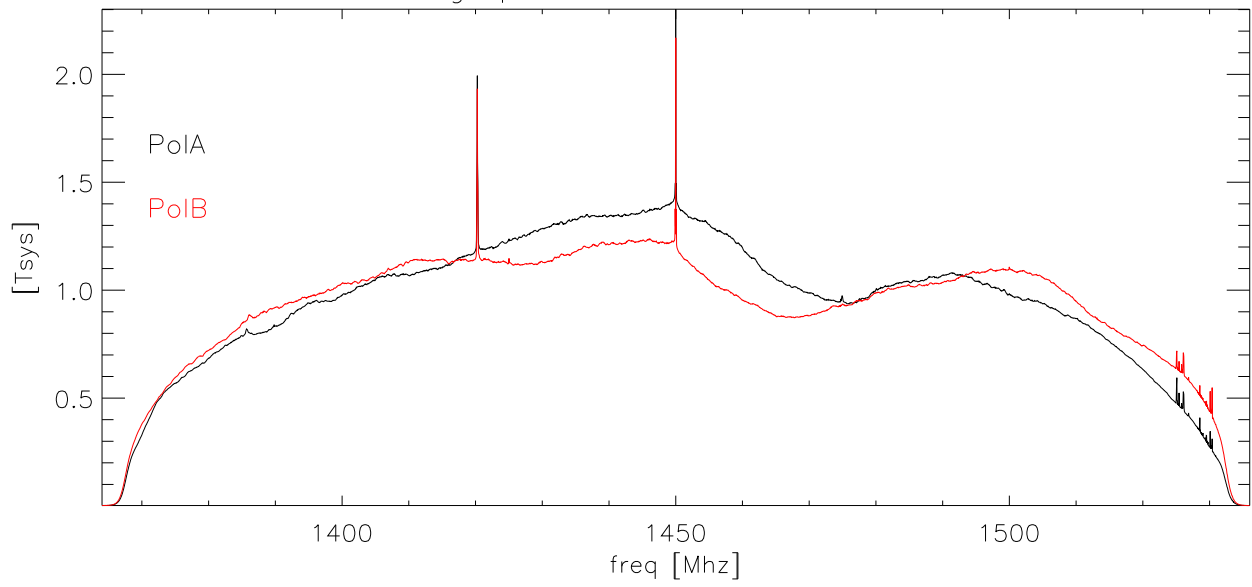


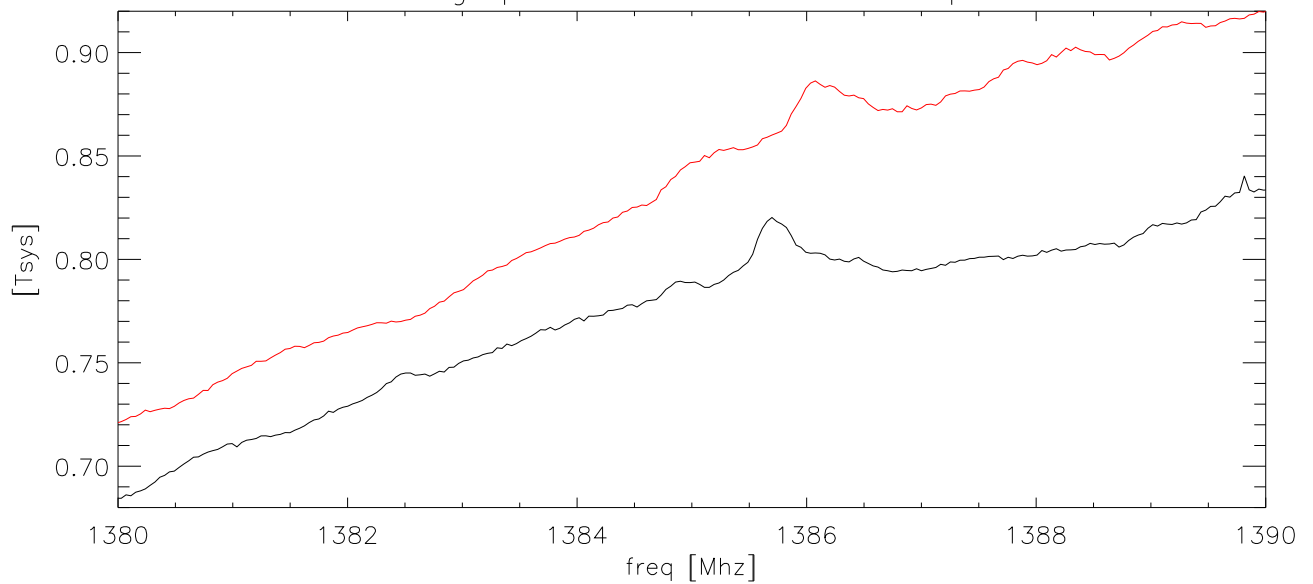
23feb09 a2130 Avg spectra 60 secs. 1300 Band



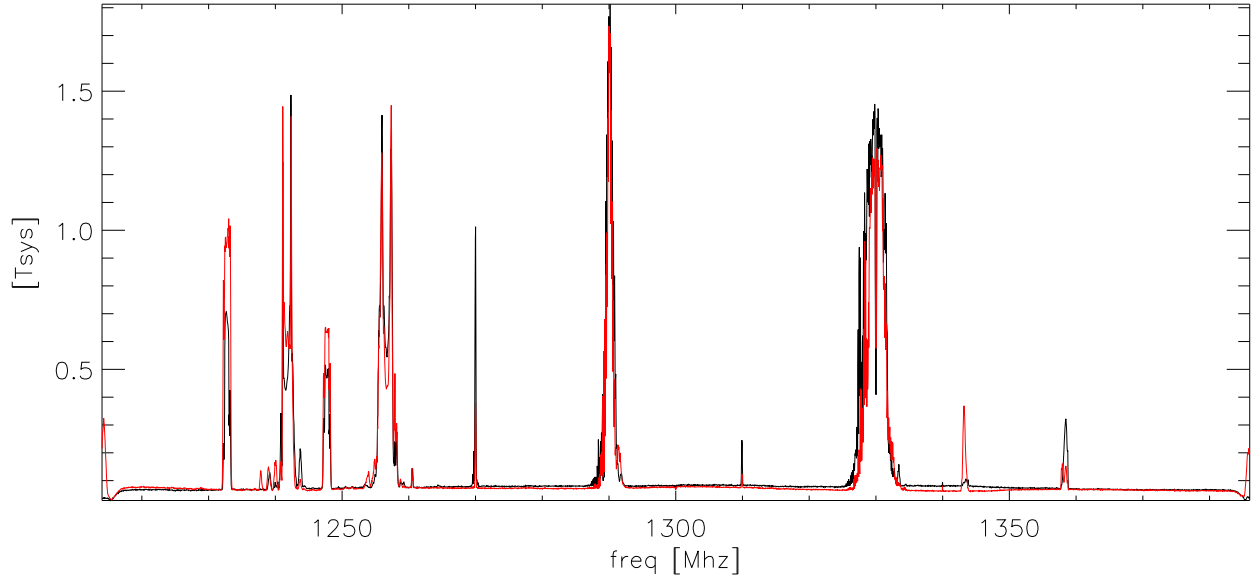
Avg spectra 60 secs. 1450 Band



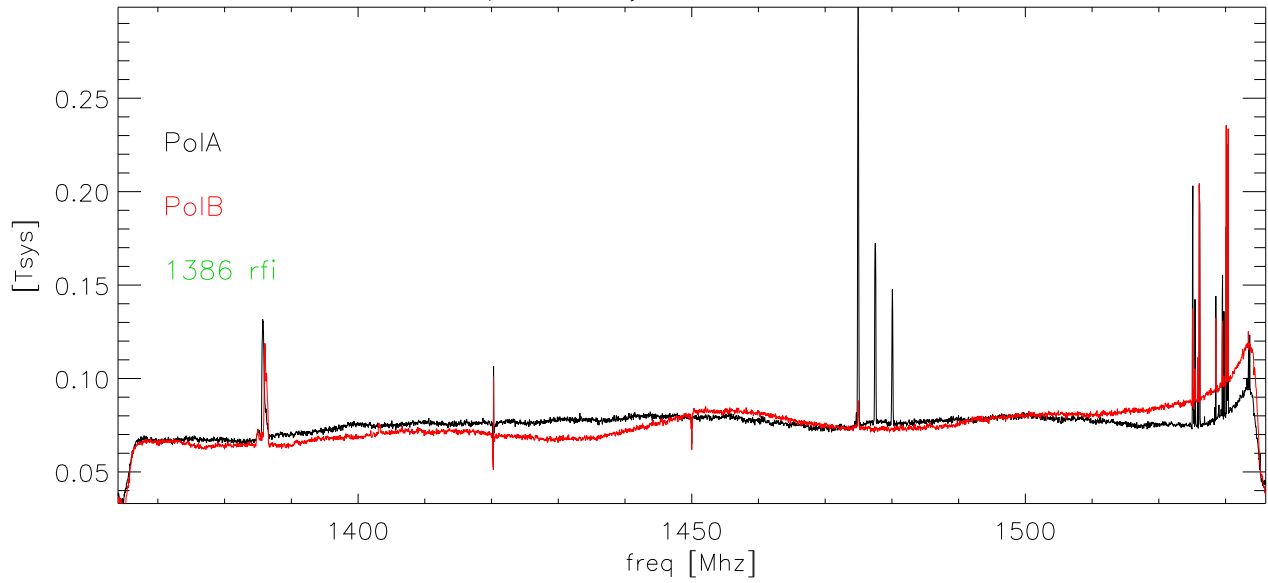
Avg spectra 60 secs. 1386 blowup



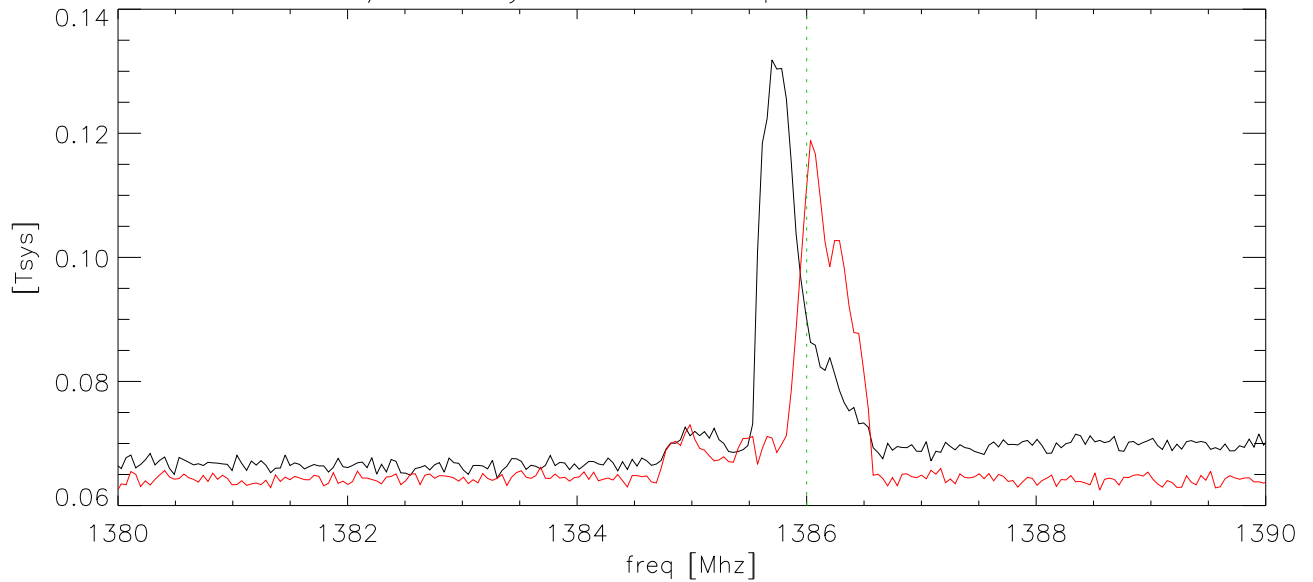
23feb09 a2130 rms/mean by channel. 60 secsData. 1300 Band



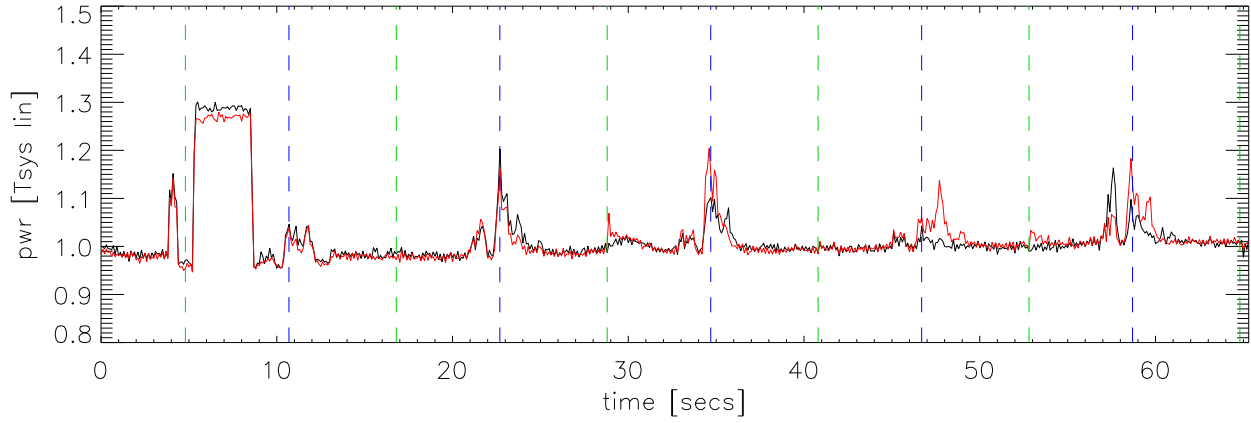
rms/mean by channel 1450Band



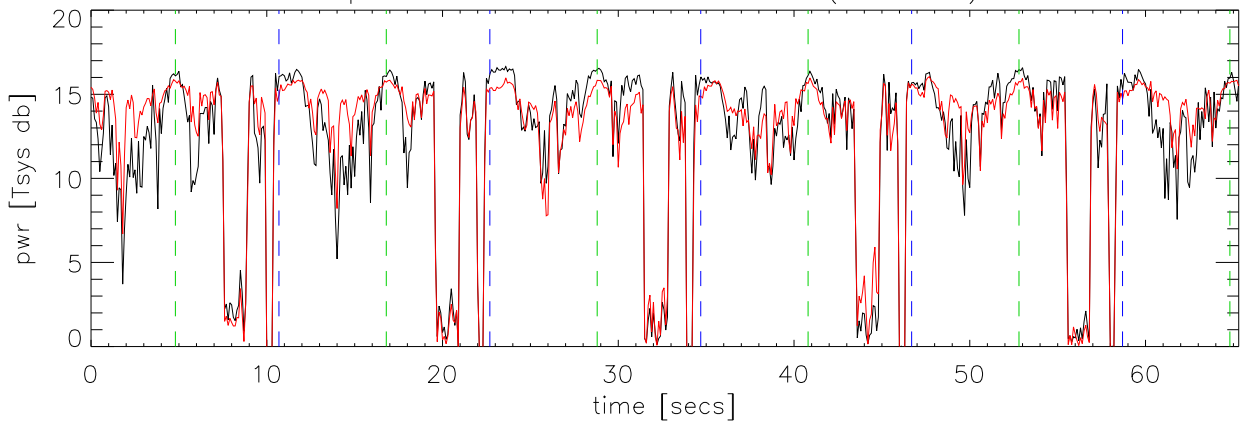
rms/mean by channel blowup around 1386 MHz



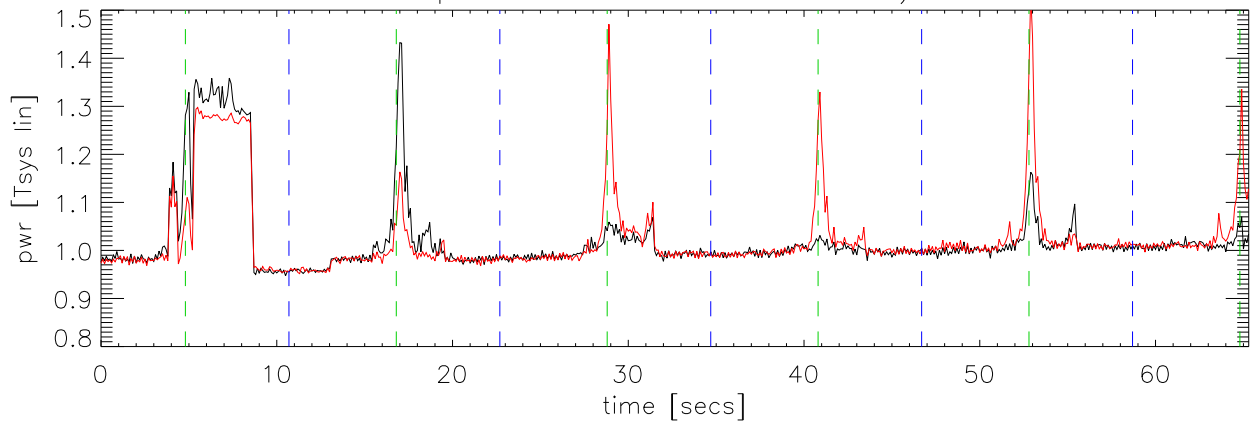
23feb09 a2130. pwr Vs time about 1385Mhz



pwr Vs time about 1257 Mhz (aerostat)



pwr Vs time about 1386 Mhz)



pwr Vs time about 1330 Mhz (faa radar)

