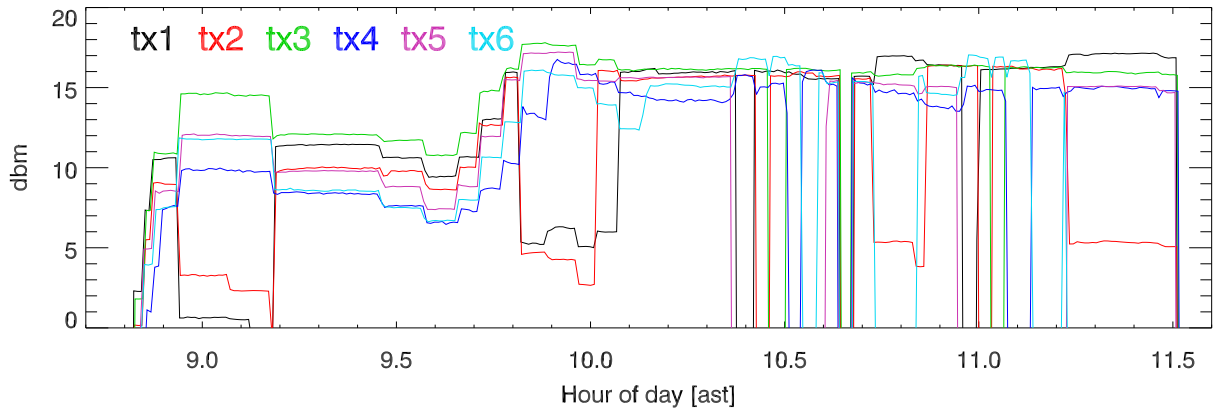
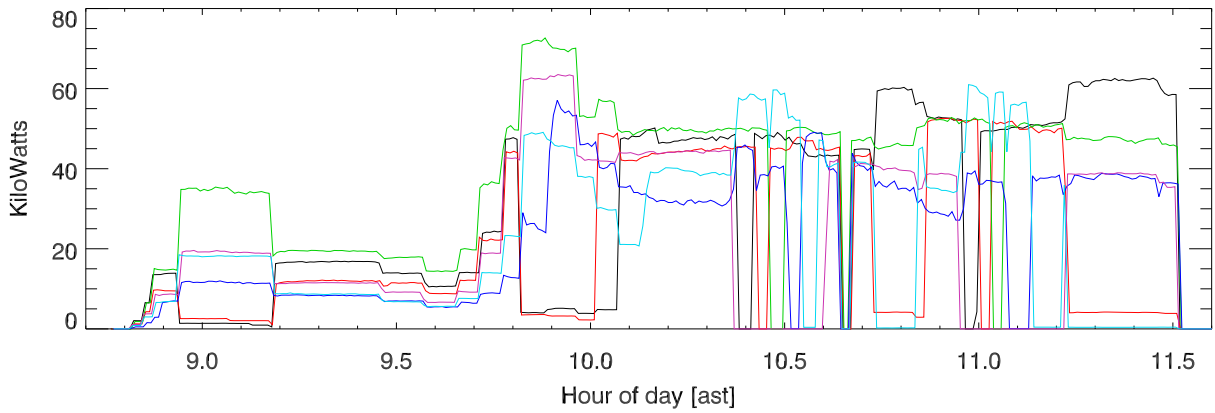


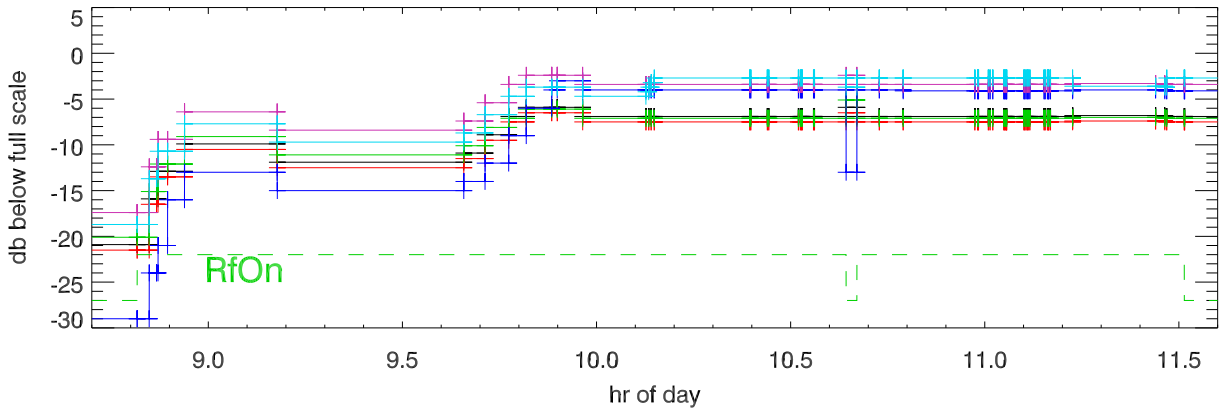
161012 8 Mhz Band tx power. rf coupler output. mesh 0,-5,-10 ft



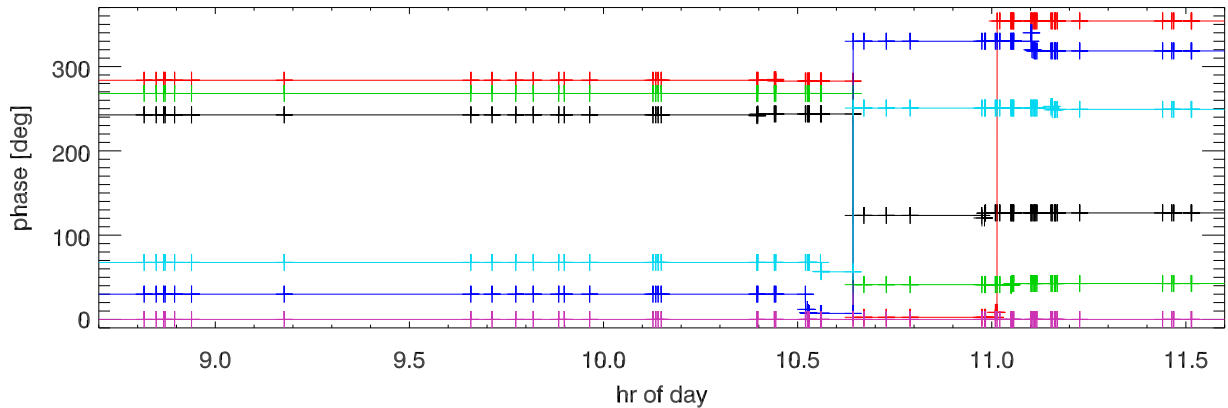
Output power in KWatt



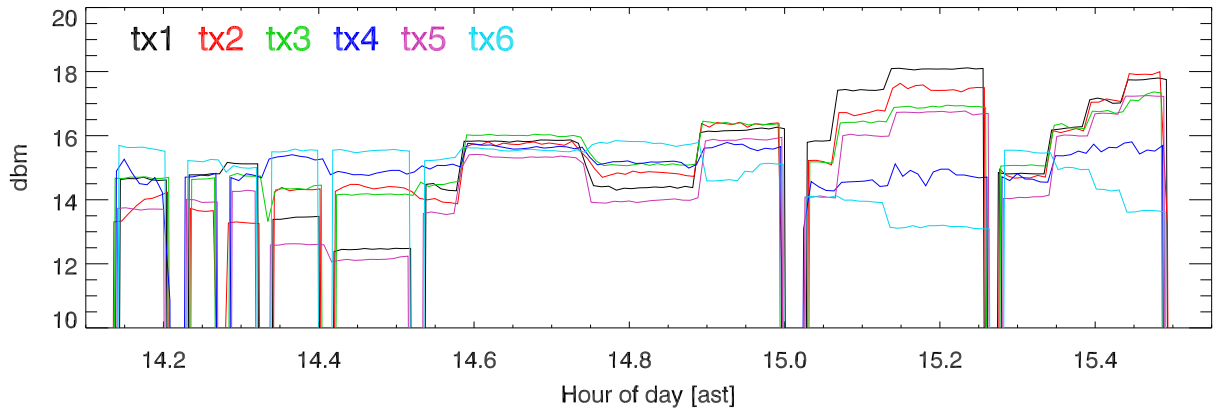
synth drive amplitude.



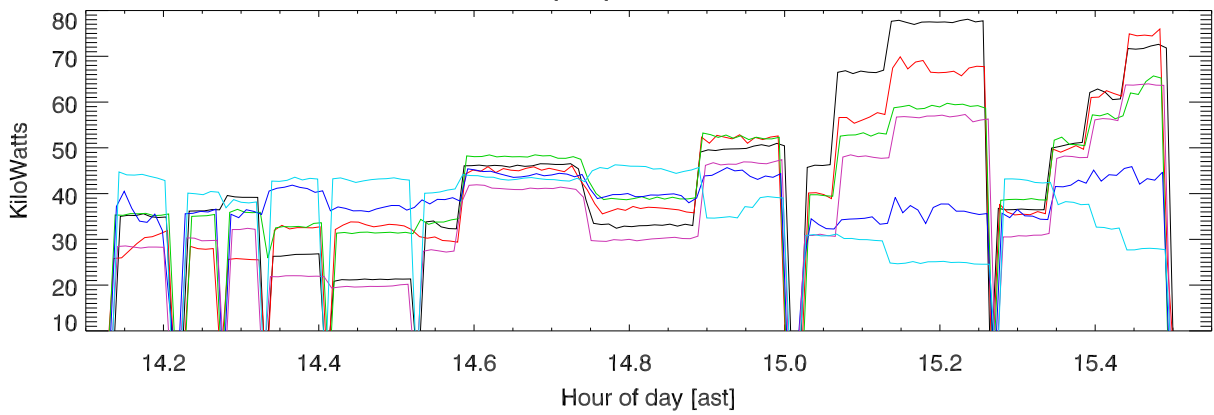
synth phase



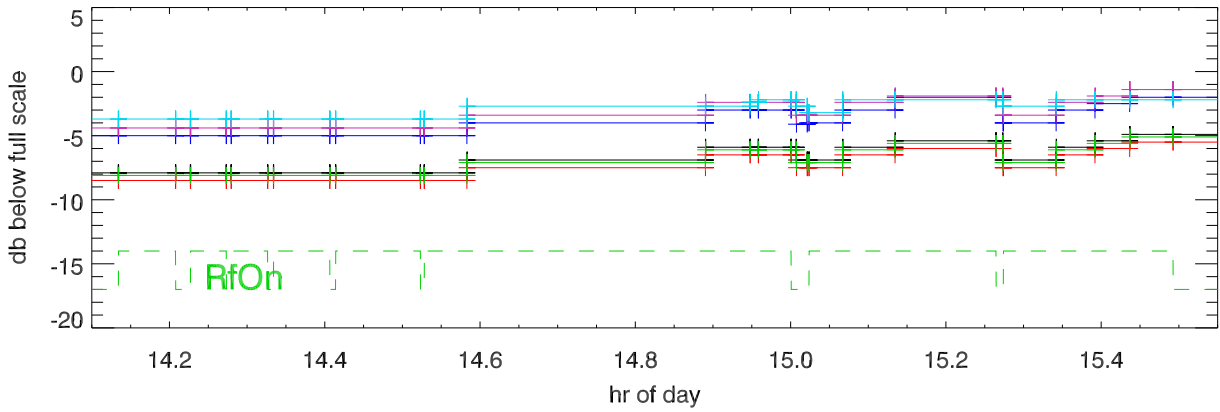
161012 8 Mhz Band tx power. rf coupler output. mesh -10 ft,-15 ft



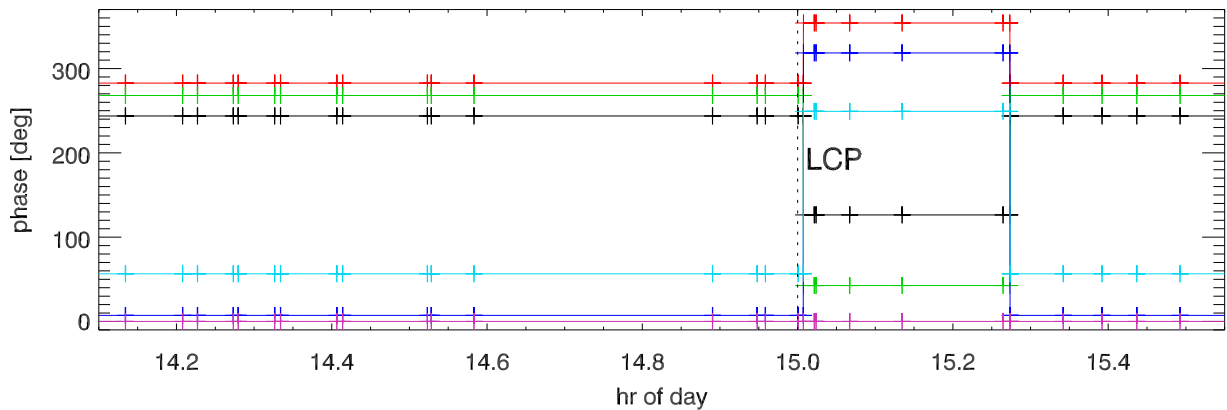
Output power in KWatt



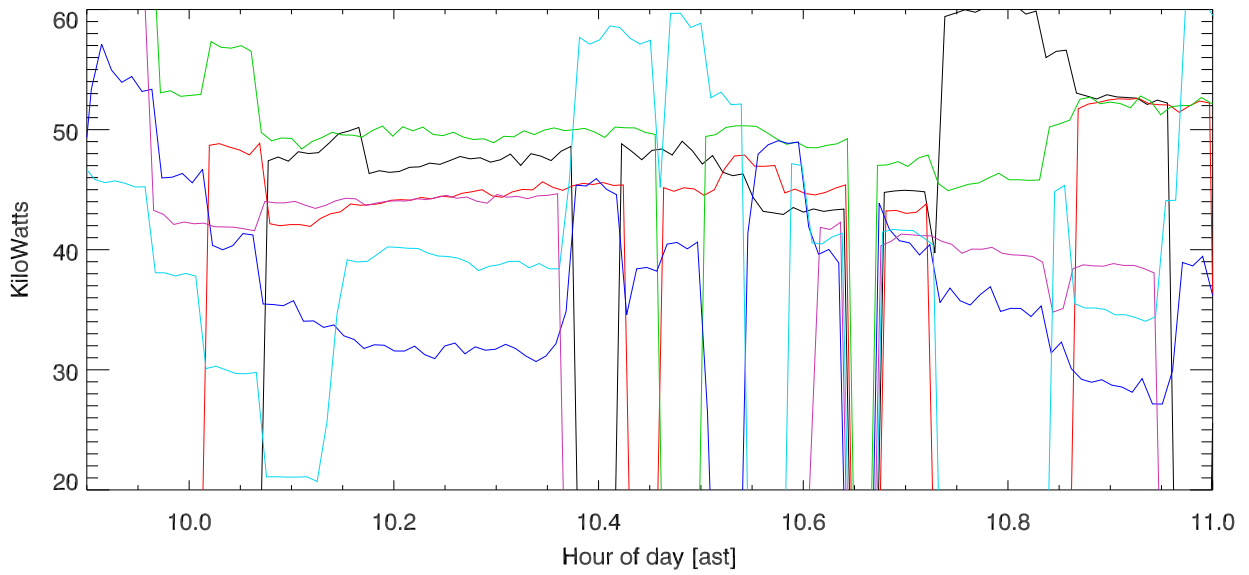
synth drive amplitude.



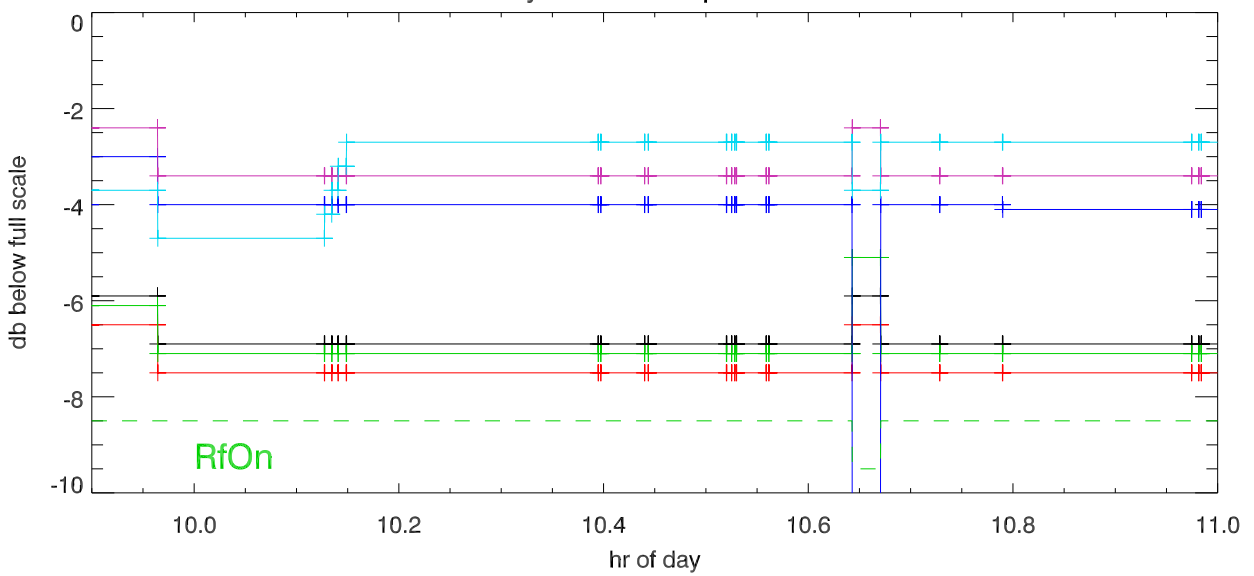
synth phase



161012 8 Mhz Band Output power in KWatt TX 4 power drifts



synth drive amplitude.



synth phase

