

Leica GKL311

Quick Guide



Version 1.0

EN/DE/FR/ES/IT/PT/NL/DA/NO/
SV/FI/ET/PL/RU/JA/KO/ZH

- when it has to be **right**

Leica
Geosystems

Introduction

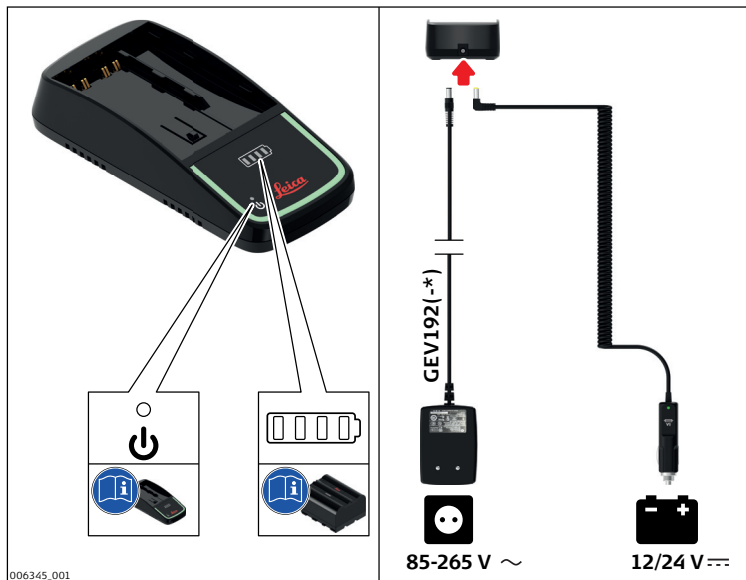


Read and follow the User Manual of the main product before using the product or the accessories delivered with the product.

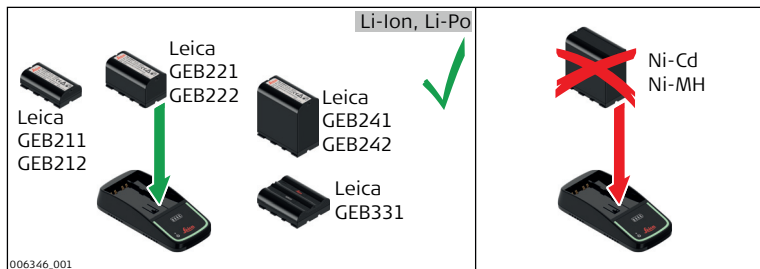
1 Description of the System

Main Components

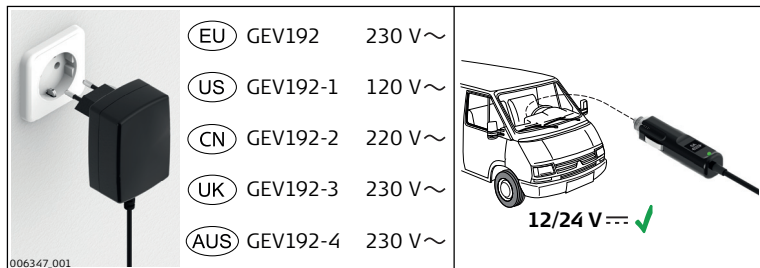


Charger
Components

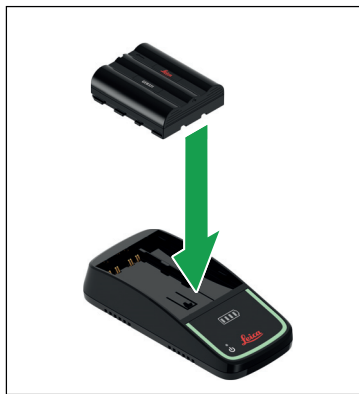
Supported batteries



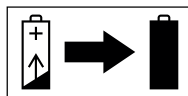
Power supply



Charging times



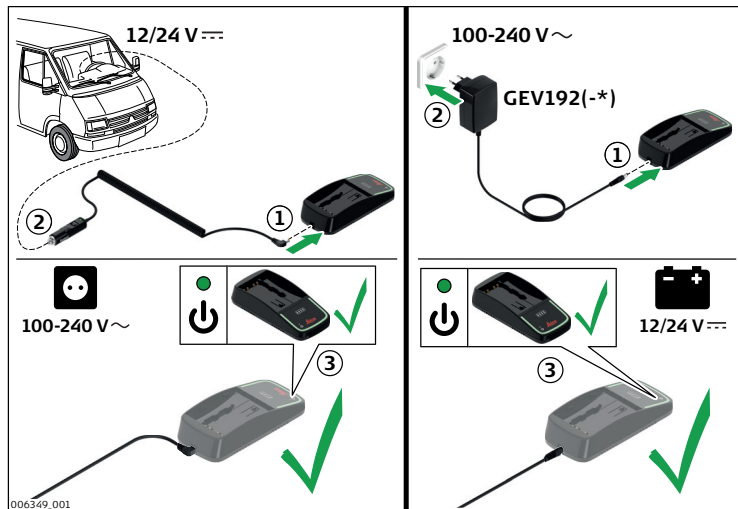
4-8h



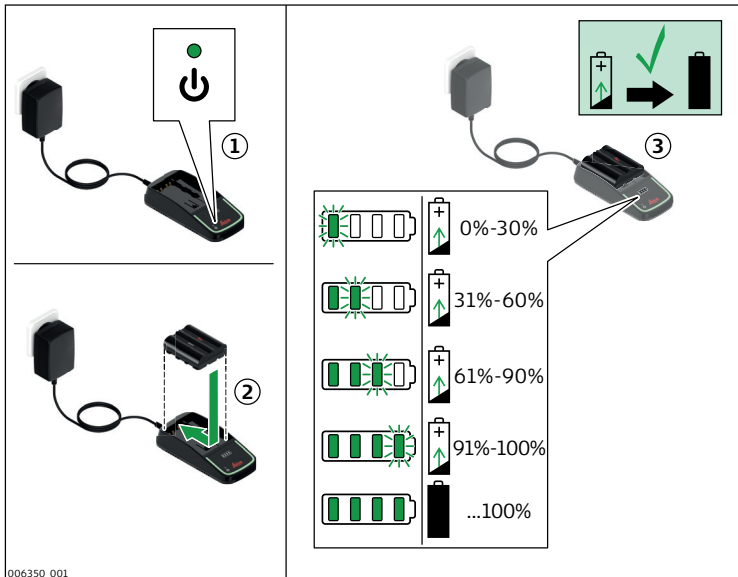
2

Operation

Connecting the charger



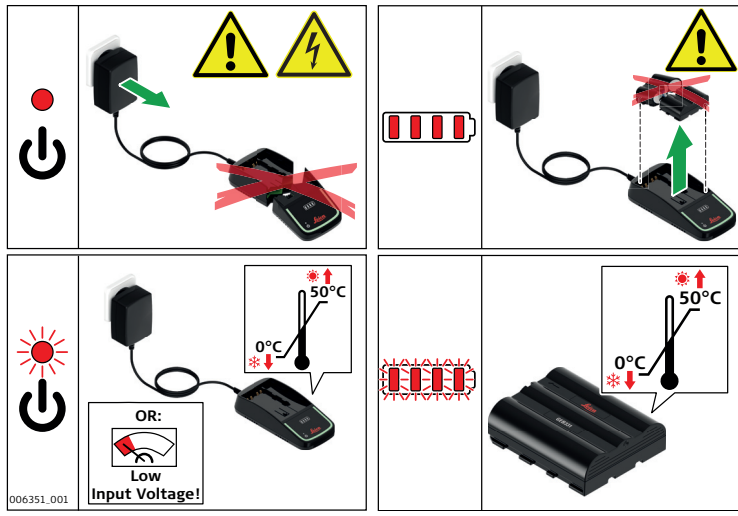
Inserting and charging the battery



3

Troubleshooting

Error indication



4 FCC Statement, Applicable in U.S.

**WARNING**

This equipment has been tested and found to comply with the limits for a Class B digital device, pursuant to part 15 of the FCC rules. These limits are designed to provide reasonable protection against harmful interference in a residential installation.

This equipment generates, uses and can radiate radio frequency energy and, if not installed and used in accordance with the instructions, may cause harmful interference to radio communications. However, there is no guarantee that interference will not occur in a particular installation.

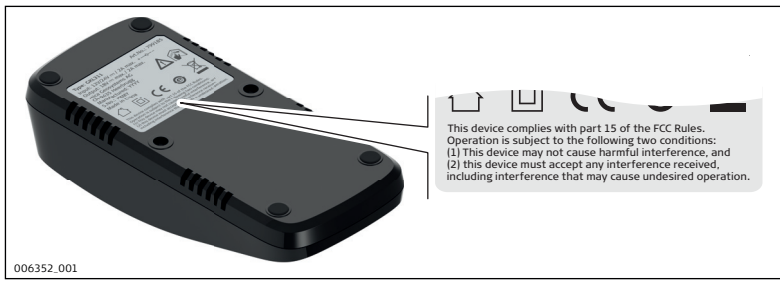
If this equipment does cause harmful interference to radio or television reception, which can be determined by turning the equipment off and on, the user is encouraged to try to correct the interference by one or more of the following measures:

- Reorient or relocate the receiving antenna.
- Increase the separation between the equipment and the receiver.
- Connect the equipment into an outlet on a circuit different from that to which the receiver is connected.
- Consult the dealer or an experienced radio/TV technician for help.

**WARNING**

Changes or modifications not expressly approved by Leica Geosystems for compliance could void the user's authority to operate the equipment.

Type Plate Labelling GK311



Leica Geosystems AG

Heinrich-Wild-Strasse

CH-9435 Heerbrugg

Switzerland

Phone +41 71 727 31 31

www.leica-geosystems.com

- when it has to be **right**

Leica
Geosystems

**819505-1.0.0en/de/fr/es/it/pt/nl/
da/no/sv/fi/et/pl/ru/ja/ko/zh**

Original text

Printed in Switzerland

© 2014 Leica Geosystems AG, Heerbrugg, Switzerland