
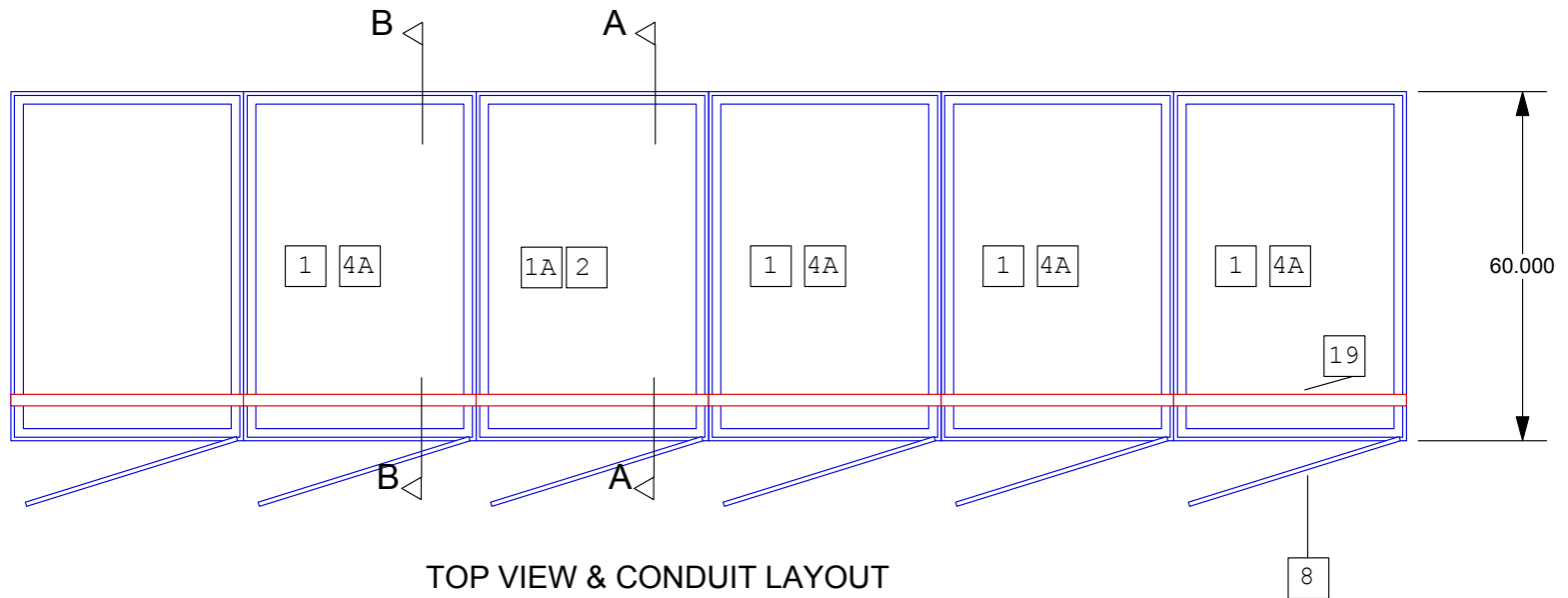


FRONT VIEW WITH DOORS REMOVED


<b>CUSTOMER</b>	SRI INTERNATIONAL	<b>EQUIPMENT</b>	MAIN SWITCHGEAR	ALL DIMENSIONS IN INCHES. NOT TO SCALE JOB # 03-12-011 PROJ. # P-2896	 <b>STELKO ELECTRICAL PRODUCTS, INC.</b> RD 858 KM. 2.2, CAROLINA, P.R. 00984 TEL. (787) 750-3526 FAX (787) 750-8235 www.stelkopr.com
<b>PROJECT</b>	MAIN SWITCHGEAR	<b>DATE</b>	11/30/2012		
<b>P.O. #</b>		<b>REVISIONS</b>	12/6/2012		

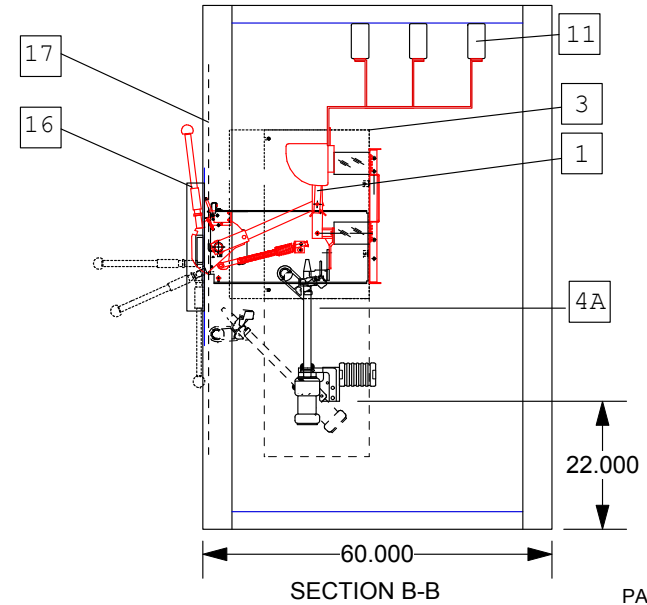
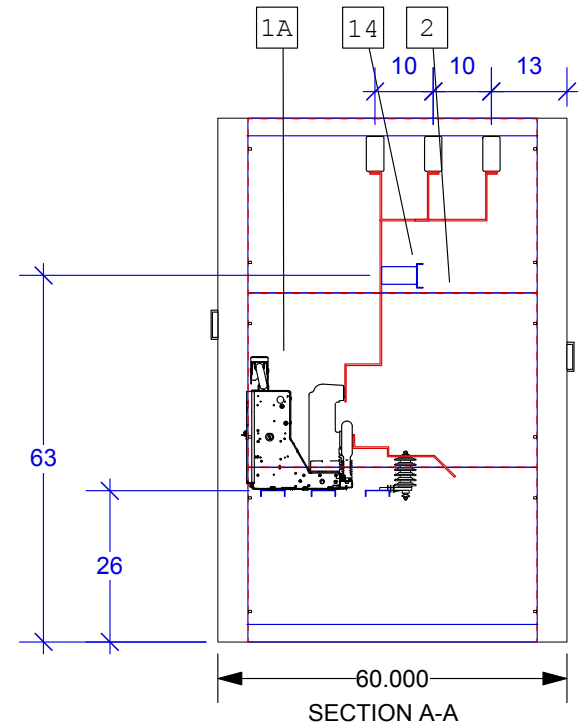
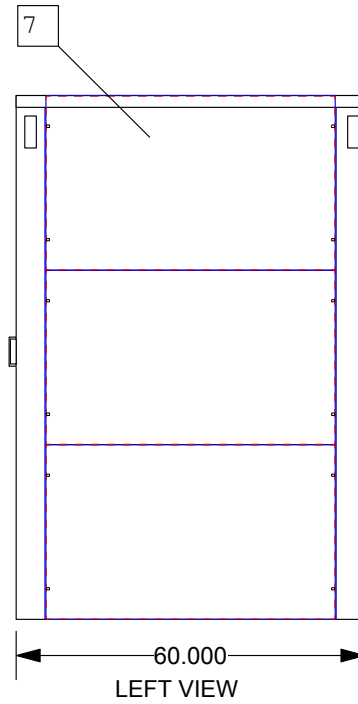
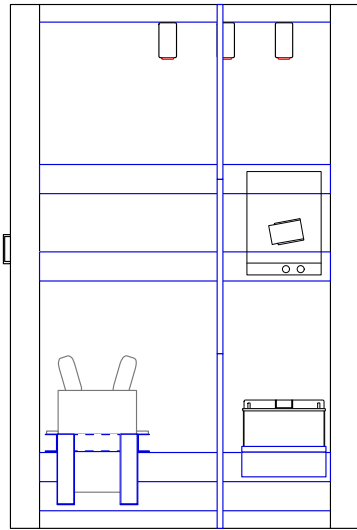



TOP VIEW & CONDUIT LAYOUT

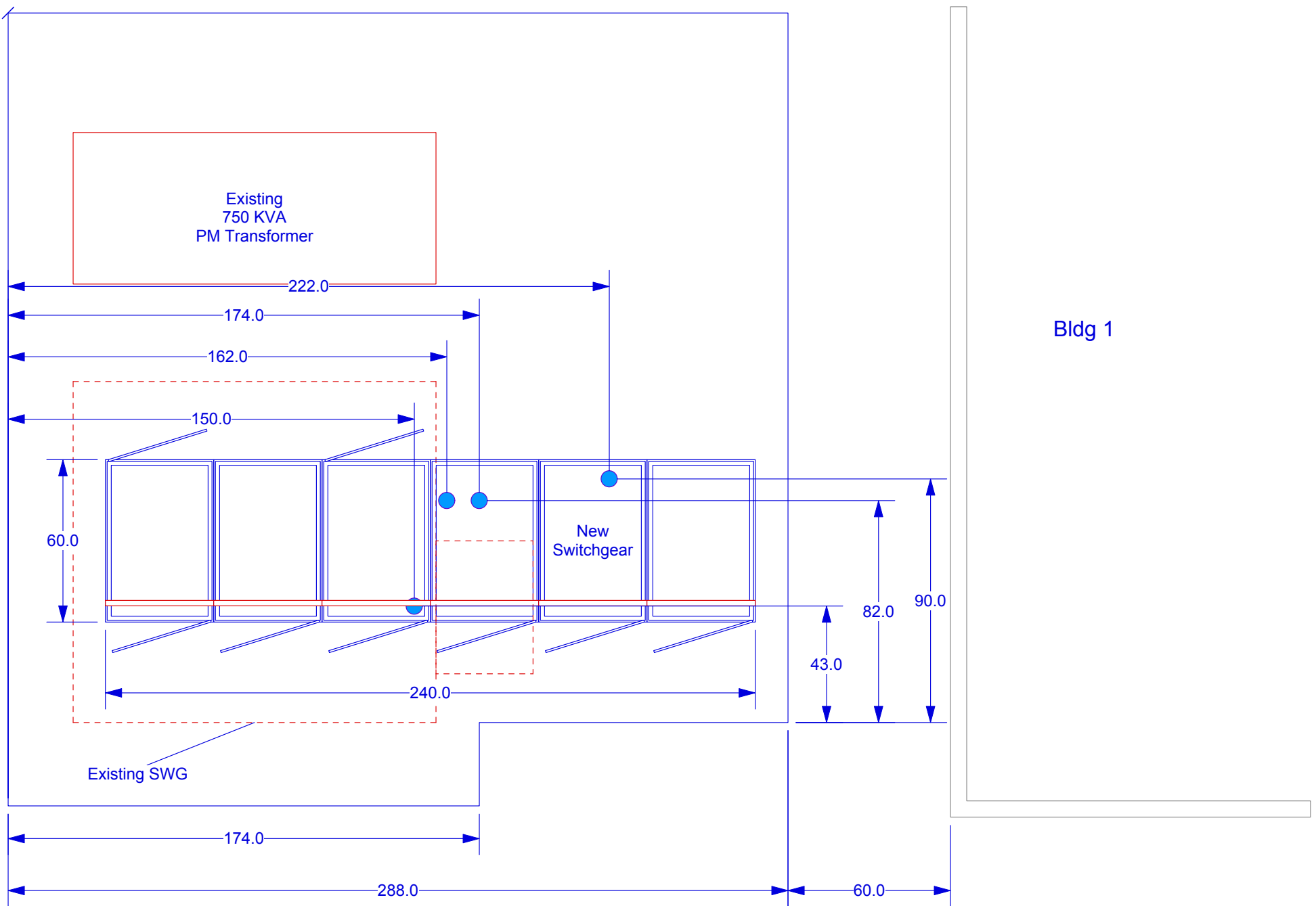
LEGEND

- CONSTRUCTION NOTES**
- 1 CONSTRUCTION MATERIAL GALVANIZED STEEL GA. 12.
  - 2 MATERIAL CLEANED AND DEGREASED PRIOR TO APPLICATION OF ADHESION PRIMER AND AND TWO COATS OF ANSI 61 GRAY PAINT.
  - 3 SLANTED ROOF PREVENTS ACCUMULATION OF WATER.
  - 4 ENCLOSURE AS PER P.R.E.P.A. ANS ANSI STANDARDS, CONSTRUCTED FROM FORMED SHEETS ANS SUPPORTING POSTS BOLTED TOGETHER INTO A RIGID STRUCTURE.
  - 5 ENCLOSURE IS NEMA 3R TAMPER-PROOF.
- 1 GANG OPERATED LOAD BREAK SWITCH 600A/3P 14.4 KV, 95 KV B.I.L., 40K A.I.C.
  - 1A eVD4 ABB FIXED VACUUM CIRCUIT BREAKER 15 KV 40KA 600 Amp. W INTEGRATED POWER METER
  - 2 LIGHTNING ARRESTERS 10 KV.
  - 3 GLASS REINFORCED POLYESTER (GLASTIK) BARRIERS, 3/16" AS PER P.R.E.P.A. SPECS 02-82.
  - 4A POWER FUSES 15 KV 95 KV B.I.L., S&C TYPE SM-20, AMPS AS SHOWN IN ONE LINE DIAGRAM, WITH 3 SPARES.
  - 5 LIFTING LUGS
  - 6 VENTILATING LOUVERS WITH TAMPER-PROOF GUARD
  - 7 PROVISION FOR FUTURE EXPANSION.
  - 8 DOOR WITH OPEN POSITION LATCH AND PADLOCK PROVISION.
  - 9 REMOVABLE ROOF
  - 10 SWITCH HANDLE COVER
  - 11 POCELAIN BUS SUPPORT
  - 12 N/A
  - 13 PROVISION FOR PADLOCKING
  - 14 600 AMP. COPPER BUS
  - 15 N/A.
  - 16 SWITCH OPERATING HANDLE, MECHANICALLY INTERLOCKED WITH DOOR
  - 17 SECOND BARRIER DOOR
  - 18 N/A
  - 19 CONTINUOUS COPPER GROUND BUS
  - 20 N/A
  - 21 N/A
  - 22 N/A


<b>CUSTOMER</b>	SRI INTERNATIONAL	<b>EQUIPMENT</b>	MAIN SWITCHGEAR	ALL DIMENSIONS IN INCHES. NOT TO SCALE	 <b>STELKO ELECTRICAL PRODUCTS, INC.</b> RD 858 KM. 2.2, CAROLINA, P.R. 00984 TEL. (787) 750-3526 FAX (787) 750-8235 www.stelkopr.com	
<b>PROJECT</b>	MAIN SWITCHGEAR	<b>DATE</b>	11/30/2012			JOB # 03-12-011
<b>P.O. #</b>		<b>REVISIONS</b>	12/6/2012			PROJ. # P-2896



<b>CUSTOMER</b>	SRI INTERNATIONAL	<b>EQUIPMENT</b>	MAIN SWITCHGEAR	ALL DIMENSIONS IN INCHES. NOT TO SCALE	 <b>STELKO ELECTRICAL PRODUCTS, INC.</b> RD 858 KM. 2.2, CAROLINA, P.R. 00984 TEL. (787) 750-3526 FAX (787) 750-8235 www.stelkopr.com
<b>PROJECT</b>	MAIN SWITCHGEAR	<b>DATE</b>	11/30/2012		
<b>P.O. #</b>		<b>REVISIONS</b>	12/6/2012		
				JOB # 03-12-011	
				PROJ. # P-2896	



EXISTING PAD LAYOUT WITH NEW SWITCHGEAR

<b>CUSTOMER</b>	SRI INTERNATIONAL	<b>EQUIPMENT</b>	MAIN SWITCHGEAR	ALL DIMENSIONS IN INCHES. NOT TO SCALE	 <b>STELKO ELECTRICAL PRODUCTS, INC.</b> RD 858 KM. 2.2, CAROLINA, P.R. 00984 TEL. (787) 750-3526 FAX (787) 750-8235 www.stelkopr.com
<b>PROJECT</b>	MAIN SWITCHGEAR	<b>DATE</b>	11/30/2012		
<b>P.O. #</b>		<b>REVISIONS</b>	12/6/2012		
				JOB # 03-12-011	
				PROJ. # P-2896	