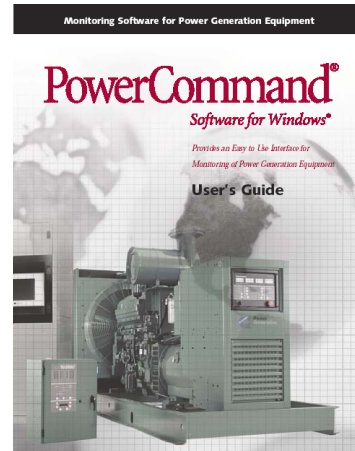


PowerCommand[®] Software For Windows (PCW 2.5)

Description

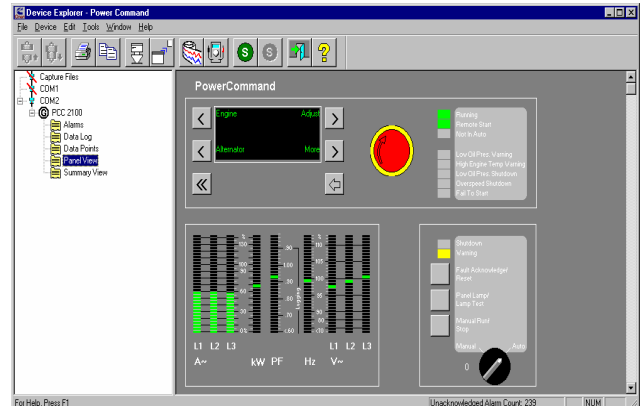
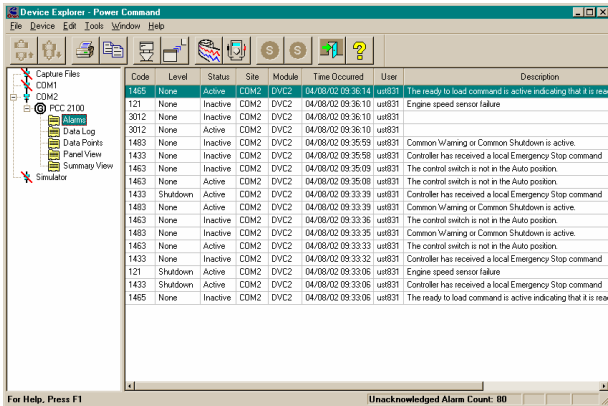
PowerCommand Software for Windows[®] v2.5 provides advanced monitoring and control for Cummins Power Generation and other customer equipment via the PowerCommand Network. Monitored equipment can include generator sets, transfer switches, circuit breakers, pumps, fans, motors or other devices connected to the PowerCommand Network. The software allows a personal computer (PC) to monitor and control virtually any number of sites containing multiple pieces of power generation equipment.

Sites can be monitored locally through direct connection of the customer's PC to the generator, or remotely over dial-up connection. An unlimited number of individual sites can be monitored, quickly and easily using the Graphical user interface (GUI). The software GUI displays an electronic representation of the generator or ATS operator panel. Through an innovative design, the customer can access generator or transfer switch data through an intuitive electronic representation of the control face of the device monitored. System parameters are displayed on the customer's PC as a virtual representation of the actual device. By clicking on the monitoring PC screen, equipment information is displayed using the same button format as found on the equipment operator panel.



Features

- Scalable software interface to Cummins Power Generation Products to allow a wide range of capabilities, ranging from simple direct-connected data gathering to total system monitoring.
- Graphical Users Interface (GUI) for easy component identification
- Simulated Operator Panel user interface for PowerCommand genset and transfer switch controls.
- Tabular view of data for Cummins network components.
- Supports concurrent monitoring of one local or one remote (network) connection; or can directly monitor controls via a direct serial interface.
- Compatible with PowerCommand Network Modules with Echelon's FTT-10 transceiver set.
- Strip Chart and monitor functions allow real-time data gathering and display of user defined points
- Compare Utility allows comparison of site data
- System Administration/Security features allow user access privileges to be restricted
- Allows multiple monitoring windows to be open.
- Alarm Pop-up Window provides notification of alarm conditions
- Alarm Logging for historical record keeping
- Standard Reports and data exporting capabilities to allow user development of custom reports
- WinBeep 32 interface for alarm notification via a pager system.



PowerCommand for Windows V2.5 allows user to select either tabular form data display or graphical display of data in a format similar to that used on the actual equipment monitored

Required Equipment Specifications

<p>Personal Computer (minimum requirements): IBM compatible PC with Windows 98, ME, 2000, XP, or Windows NT operating systems Pentium III / 4, 350 MHz or faster 128Mb RAM 8 GB Hard-drive VGA Color monitor 8x CD-ROM (recommended) One free serial communications port (Com 1 to Com 4)</p>	<p>Network Protocols: Echelon LonWorks®, LNS PC or modem connection via Network Gateway Module (RS232)</p>
---	---

Ordering Information

Part Number	Description
0998-0016-01	PowerCommand for Windows Software v 2.5, Direct Connect For direct RS232 connection of a PC with PCW 2.5 to a single PowerCommand genset or transfer switch.
0998-0016-02	PowerCommand for Windows Software v 2.5, with Networks Support For local or remote monitoring of one or more PowerCommand products operating on a network. Requires use of a network gateway module to interface PC to LonWorks network components.
www.spartacom.com	WinBEEP 32 (V4.0) Paging Software

See your distributor for more information



Cummins Power Generation
 1400 73rd Avenue N.E.
 Minneapolis, MN 55432
 763.574.5000
 Fax: 763.574.5298
 www.cumminspowergeneration.com

PowerCommand is a registered trademark of Cummins Inc
 Windows is a registered trademark of Microsoft.
 LONWORKS is a registered trademark of Echelon.
 Cummins Power Generation is a subsidiary of Cummins Inc.

WARNING For Professional Use Only. Must be installed by a qualified service technician. Improper installation presents hazards of electrical shock and improper operation, resulting in severe personal injury and/or property damage.

WARNING Back feed to a utility system can cause electrocution and/or property damage. Do not connect generator sets to any building electrical system except through an approved device or after building main switch is open.