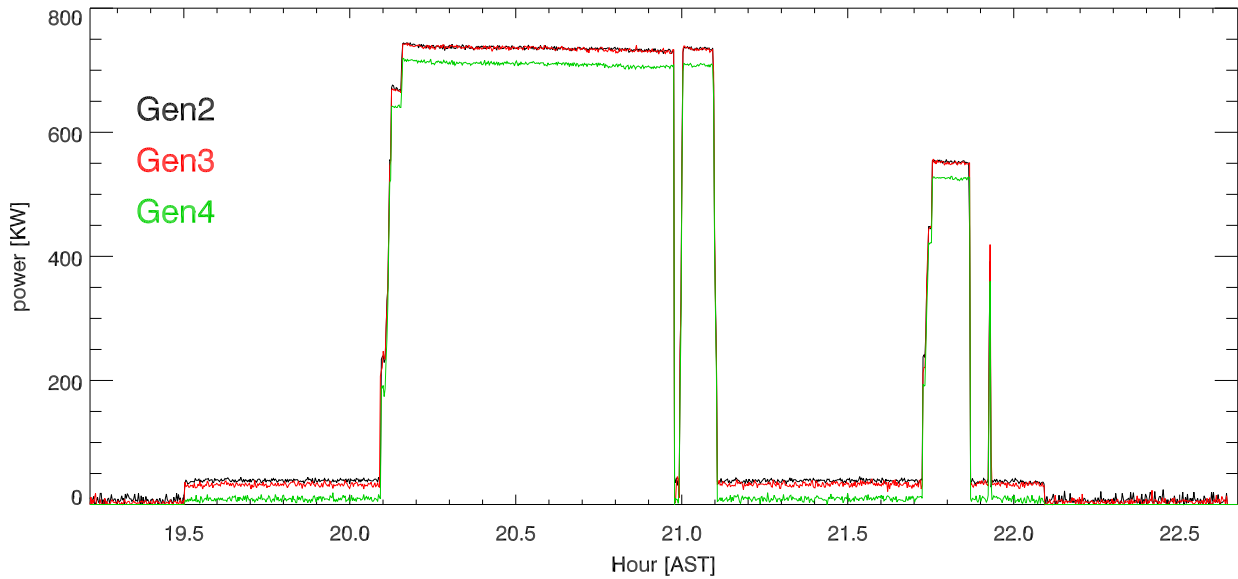
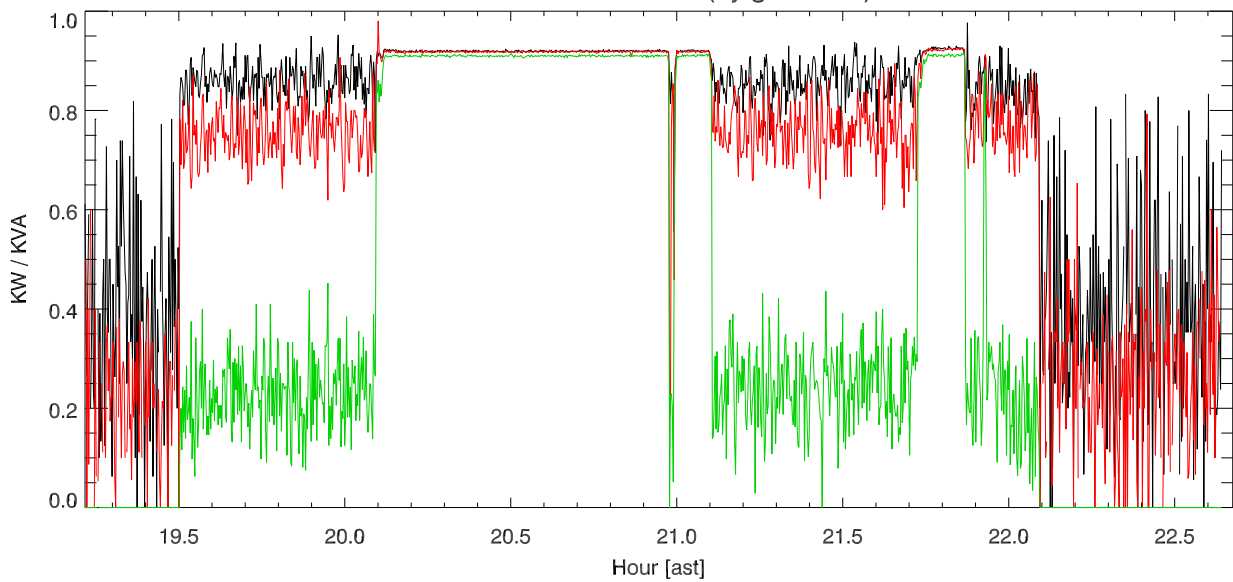


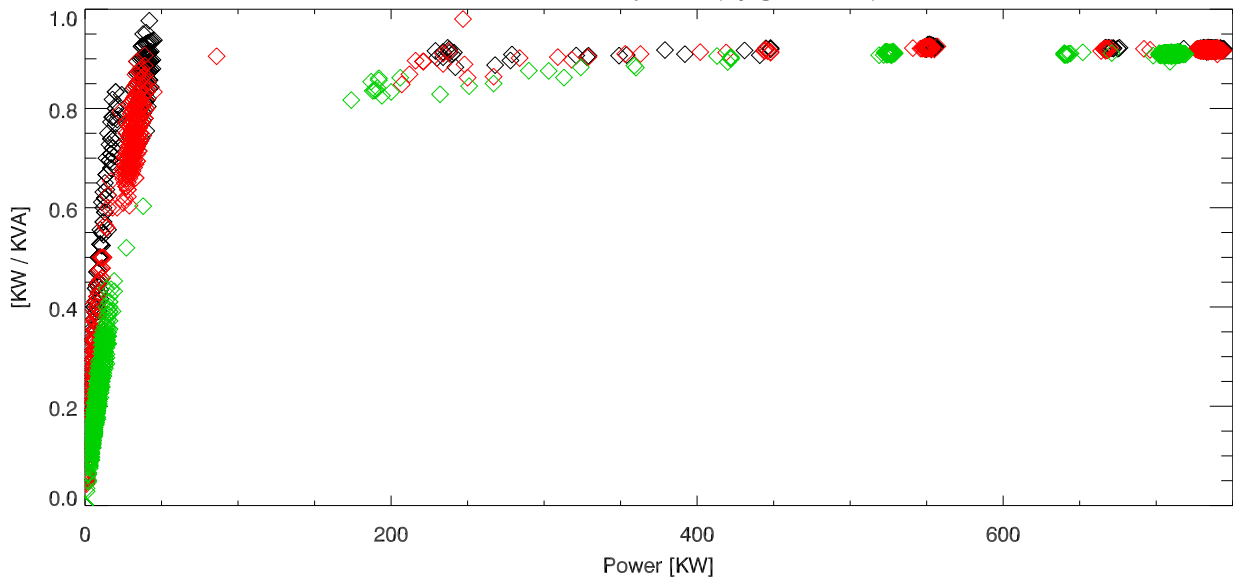
19nov13 Total power vs Time (by generator)



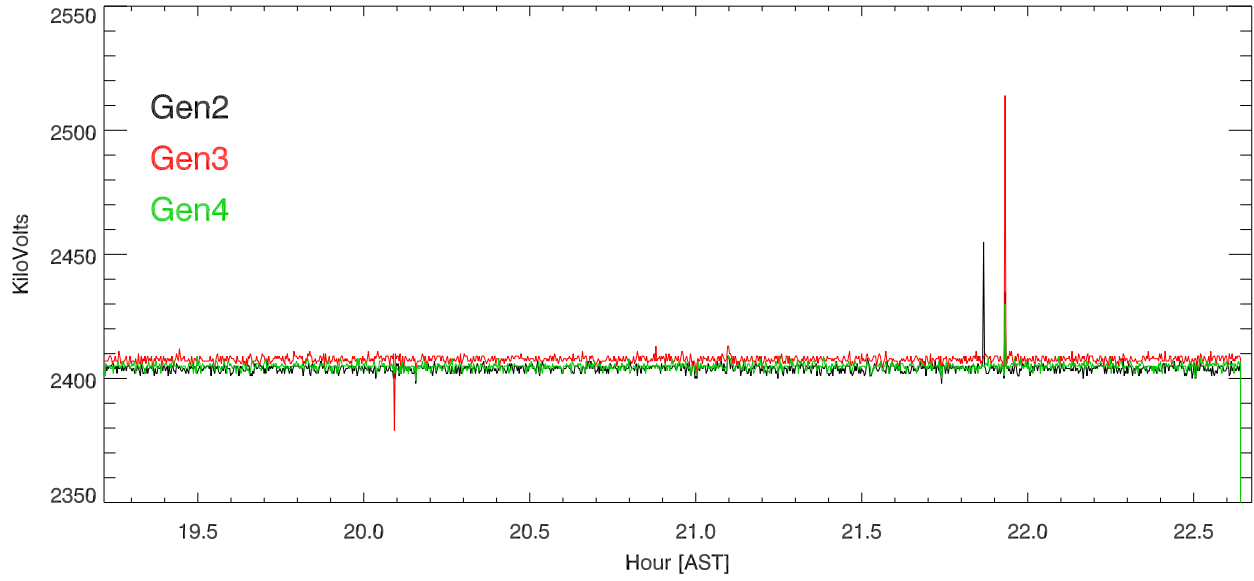
Power Factor vs Hour (by generator)



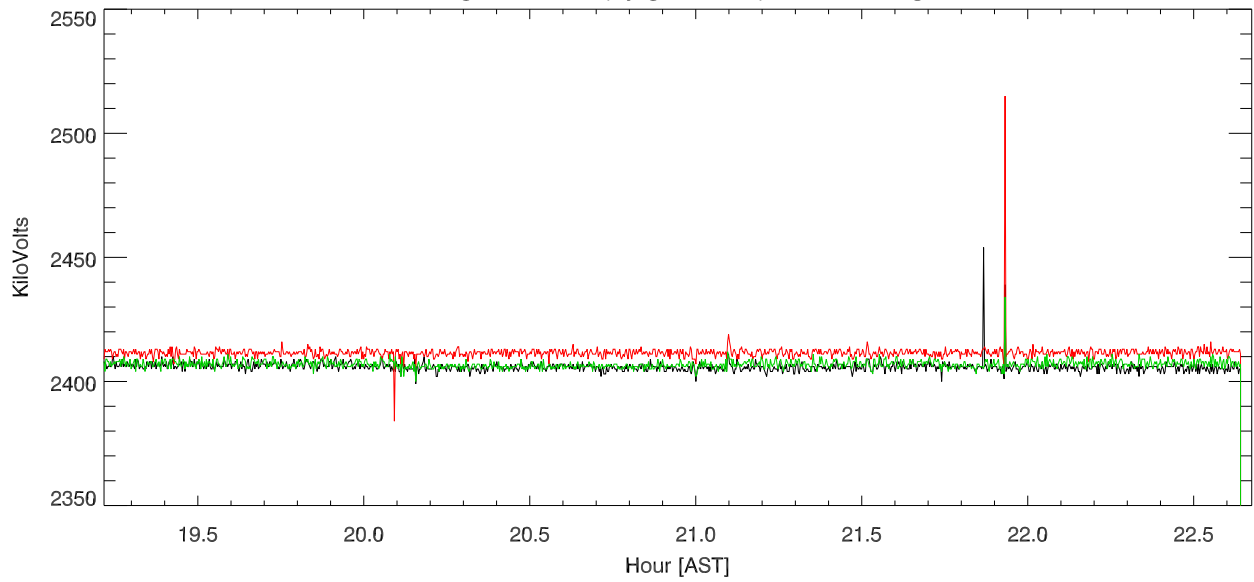
Power Factor vs power (by generator)



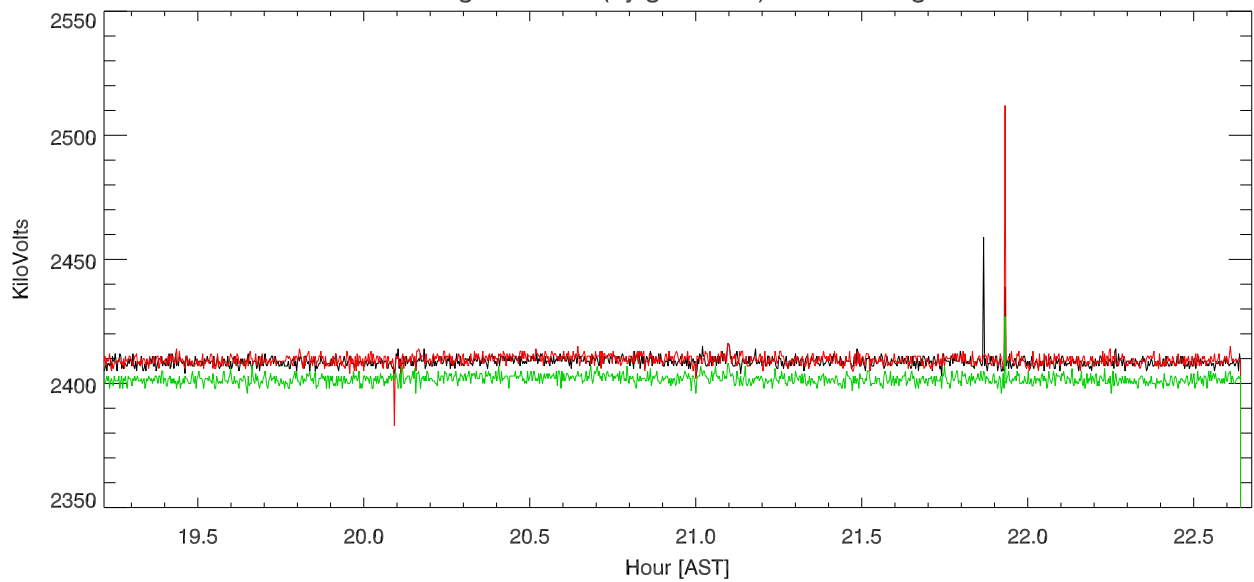
Voltage vs Hour. (by generator) Phase A to gnd



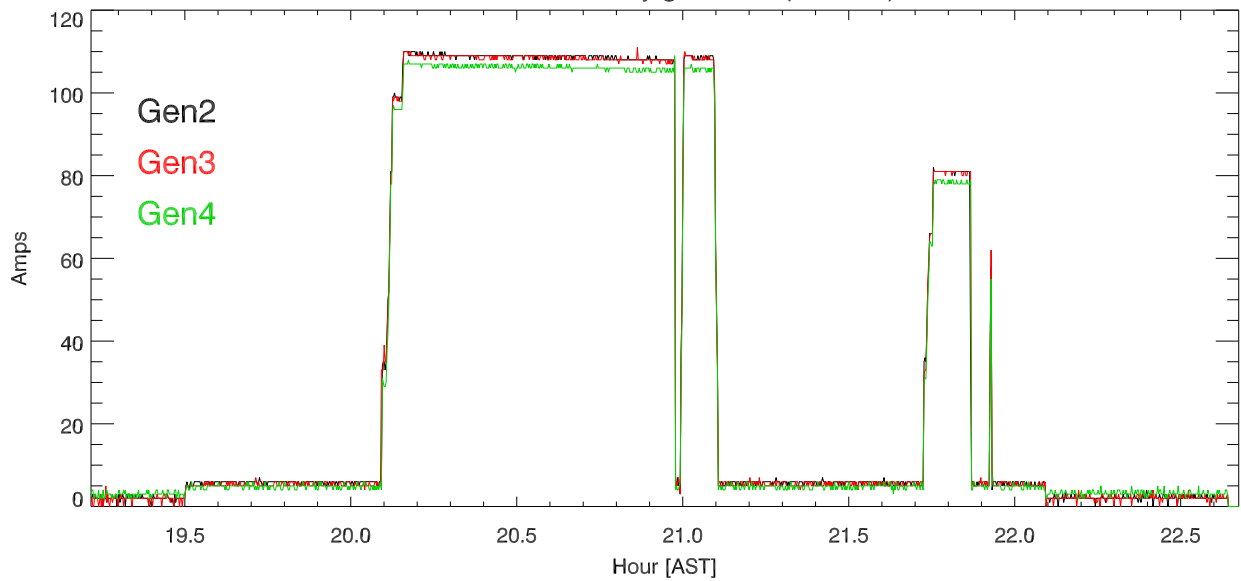
Voltage vs Hour. (by generator) Phase B to gnd



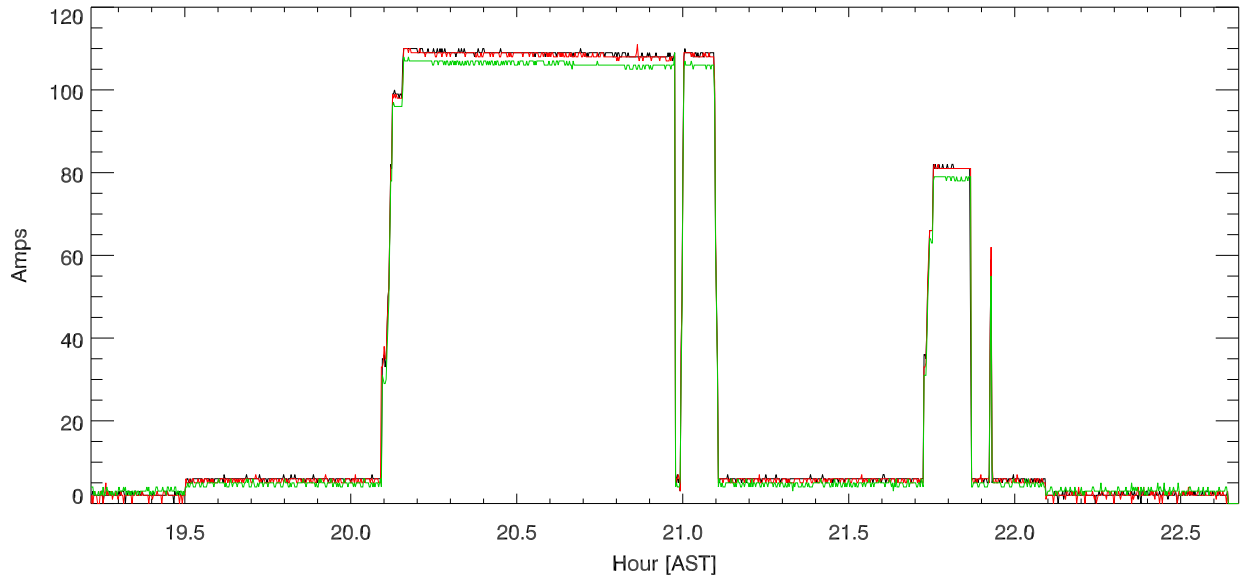
Voltage vs Hour. (by generator) Phase C to gnd



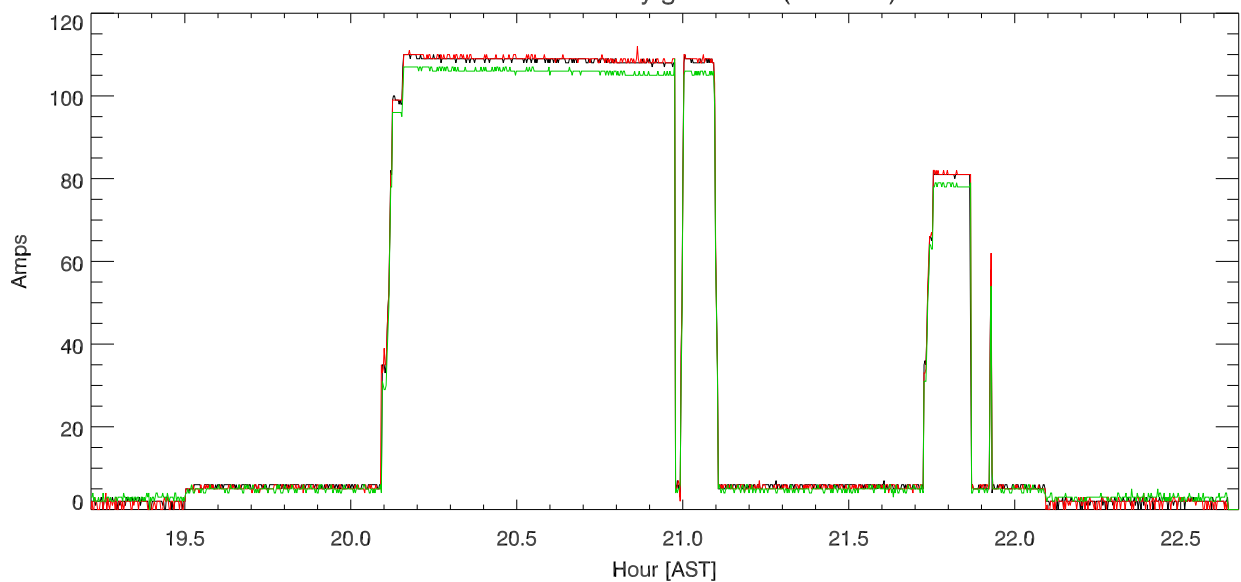
Current vs Time by generator (Phase A)

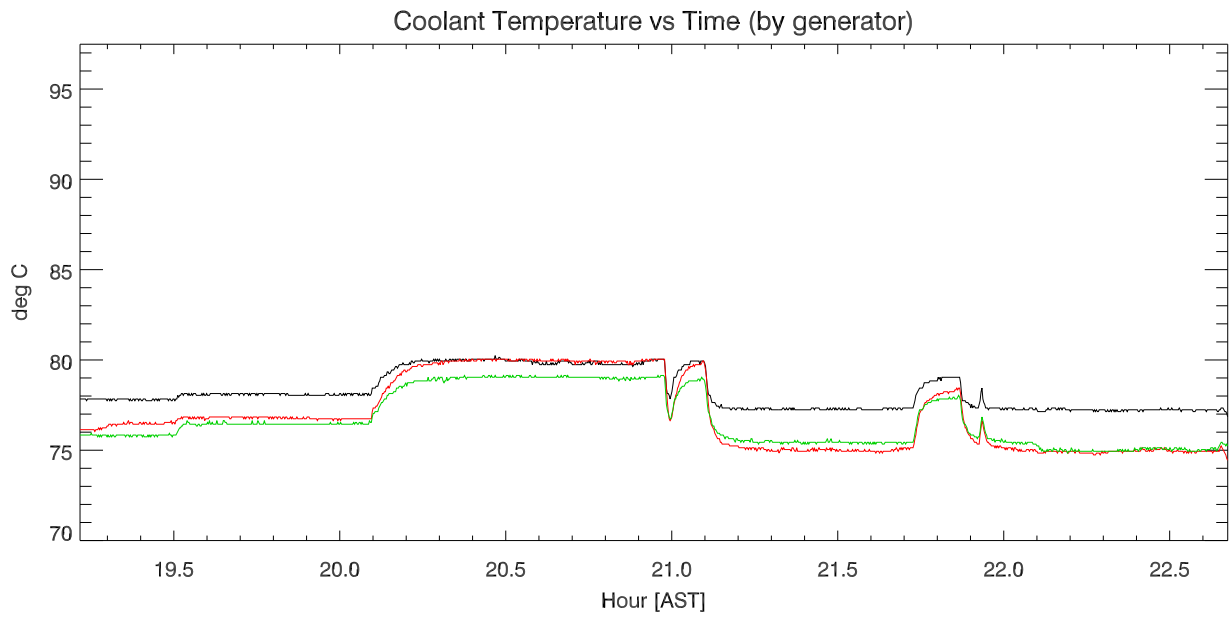
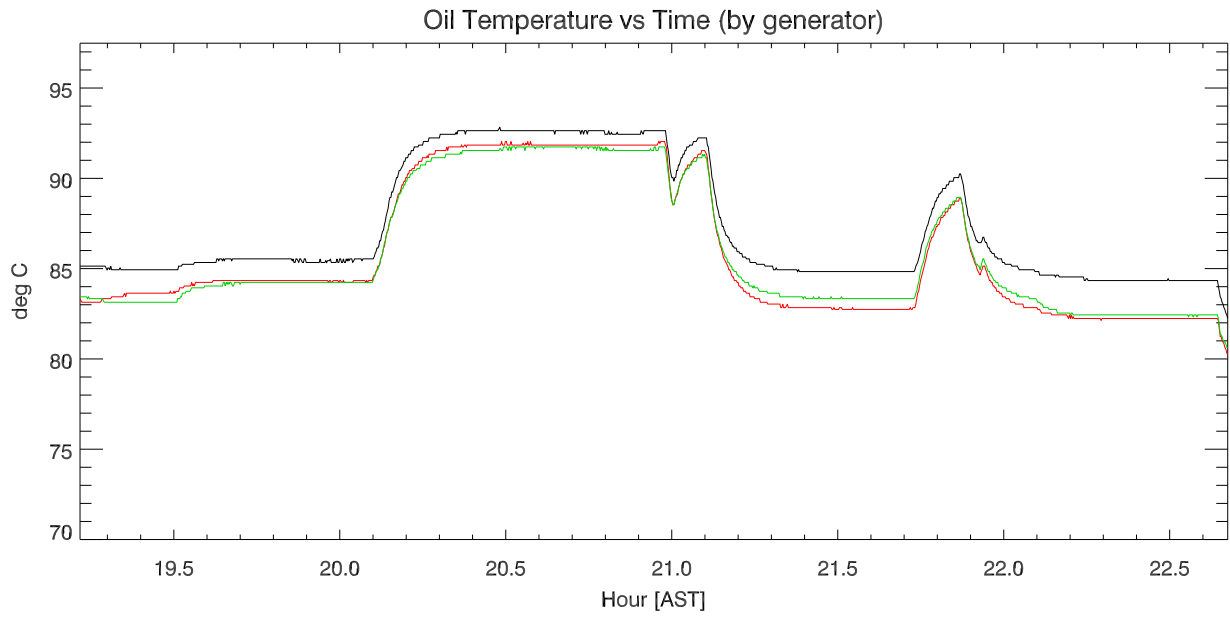
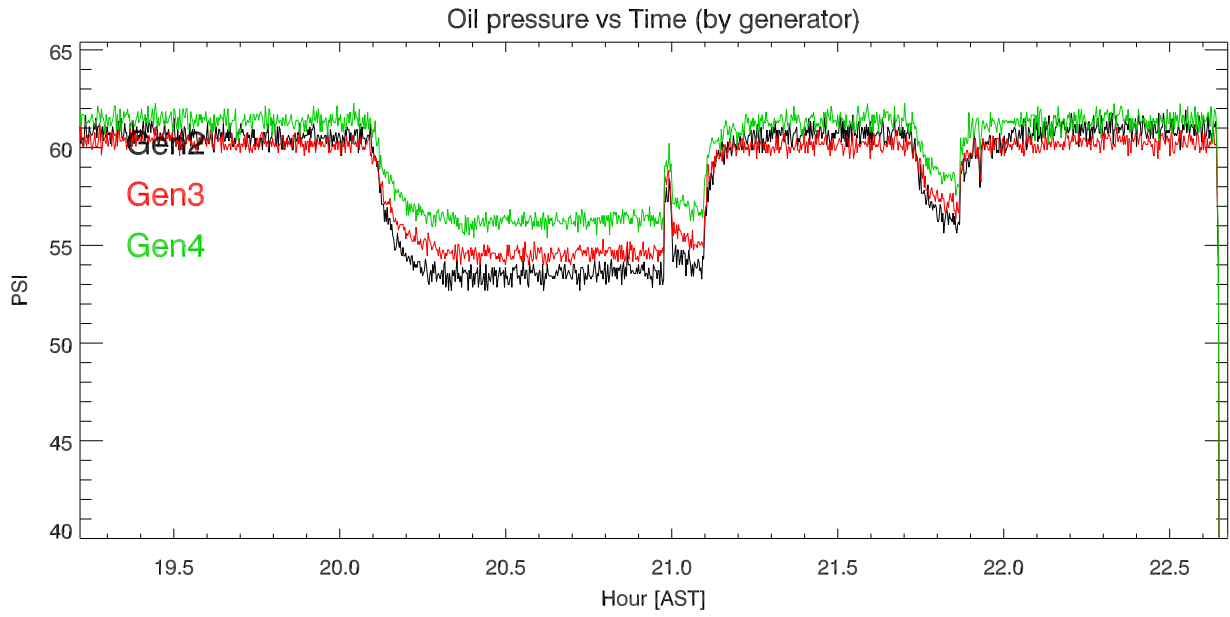


Current vs Time by generator (Phase B)

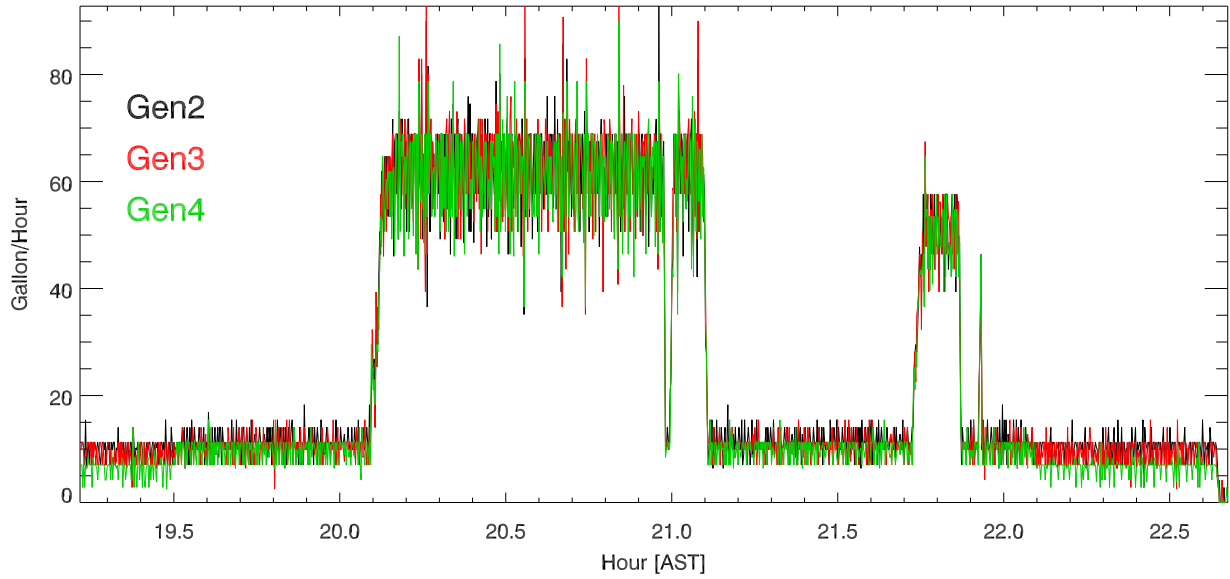


Current vs Time by generator (Phase C)

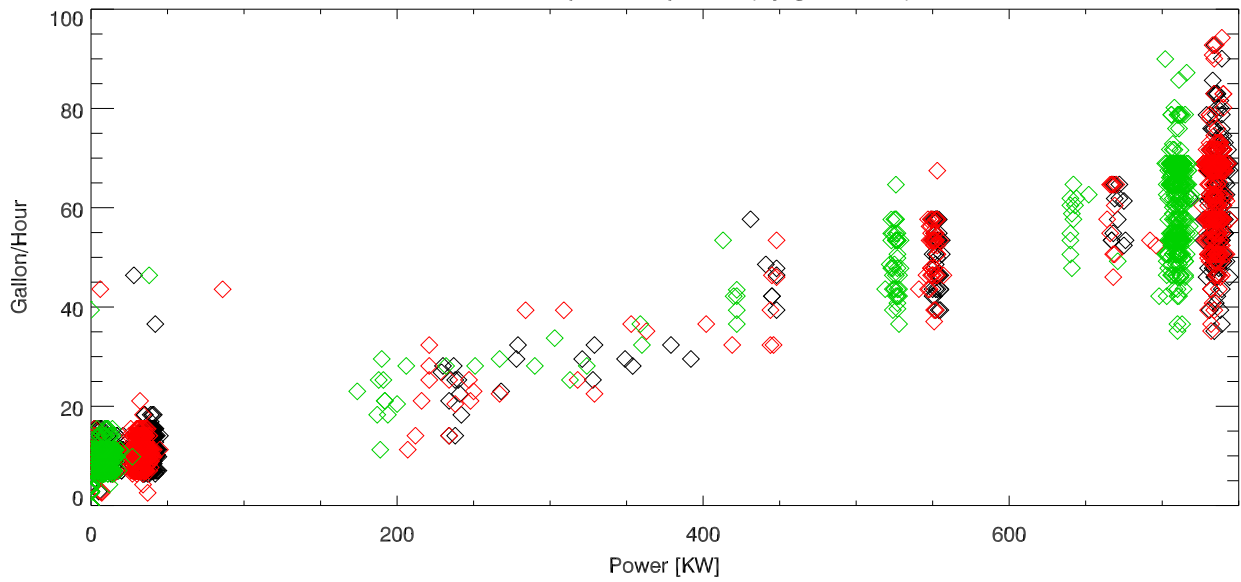




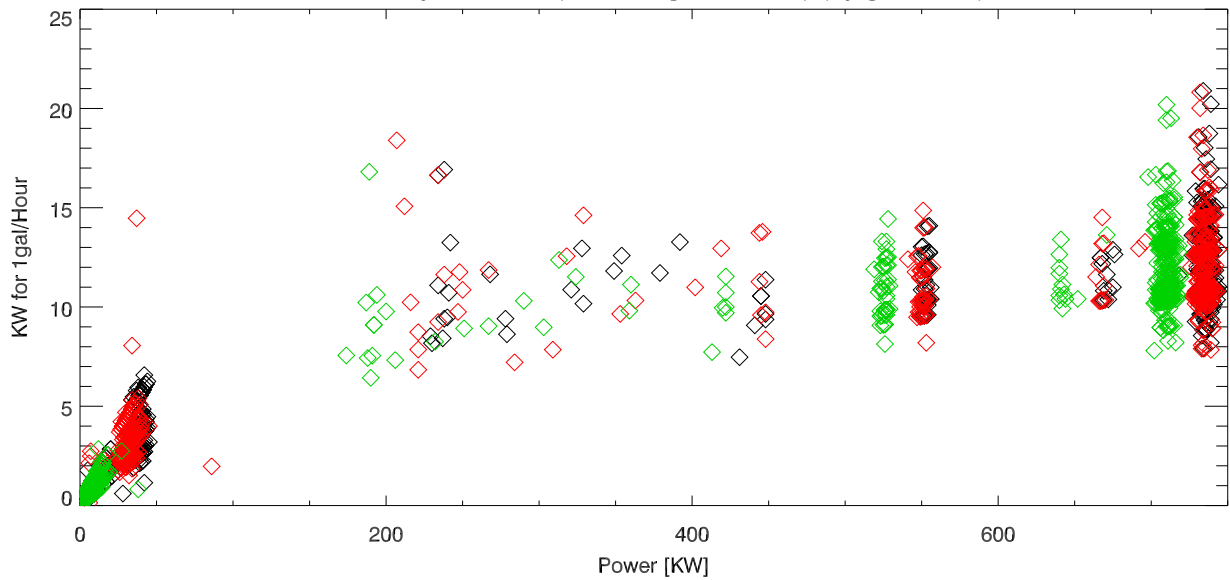
Fuel consumption vs Time (by generator)



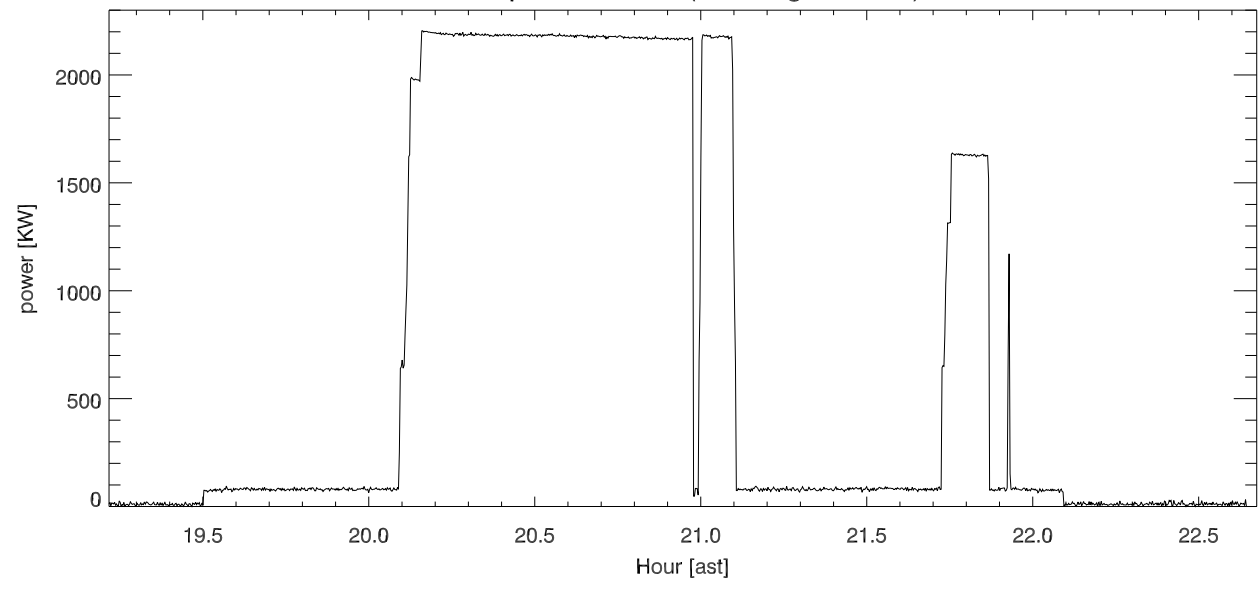
Fuel consumption vs power (by generator)



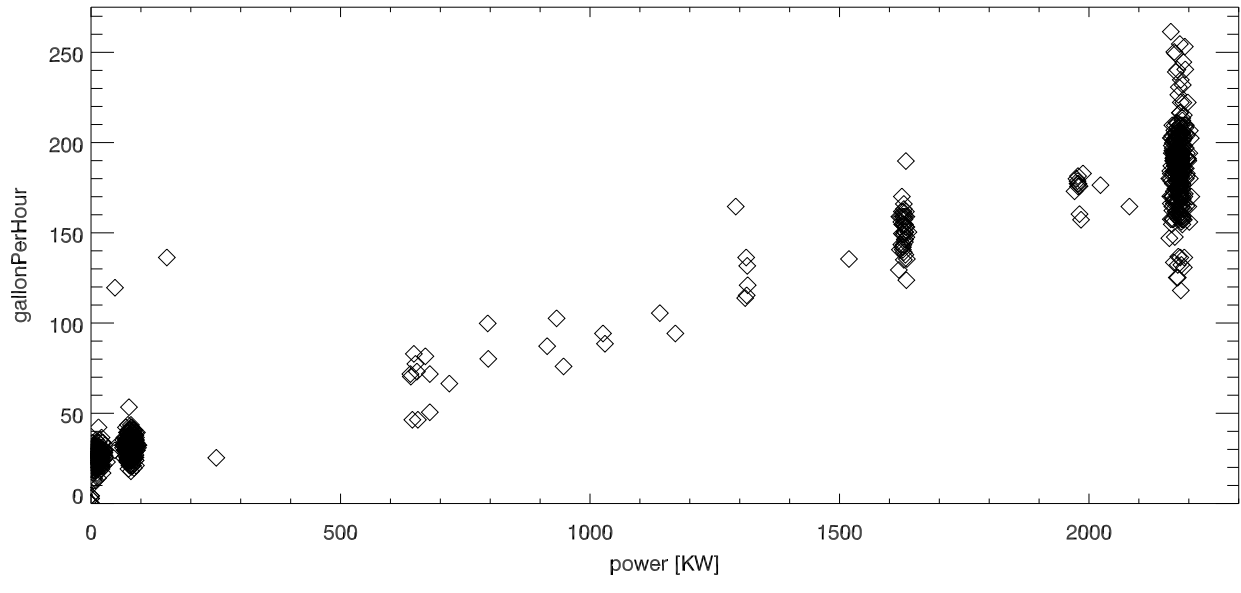
Efficiency vs Power (Kw for 1 gallon/Hour) (by generator)



Total power vs Time (sum all generators)



Fuel Rate vs total power (sum all generators)



Efficiency: KW for 1 gallon/hour. (sum all generators)

