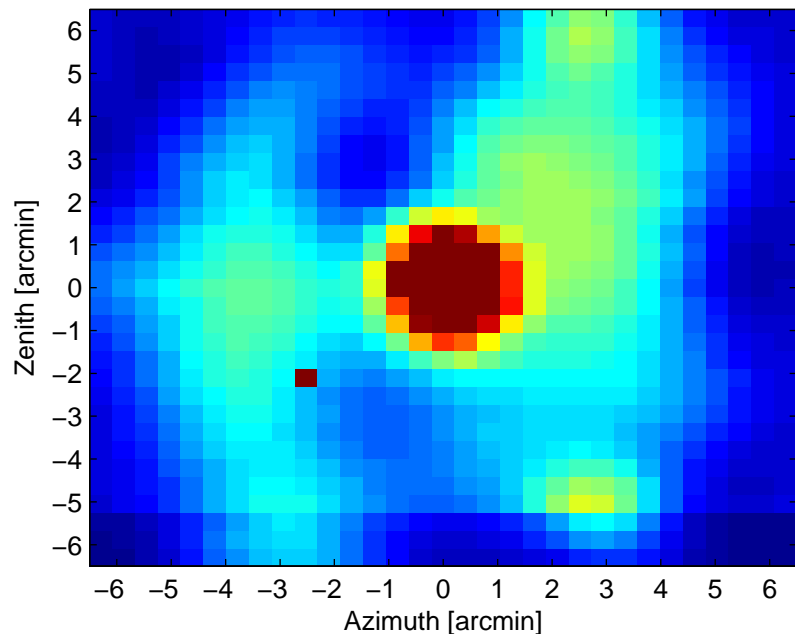
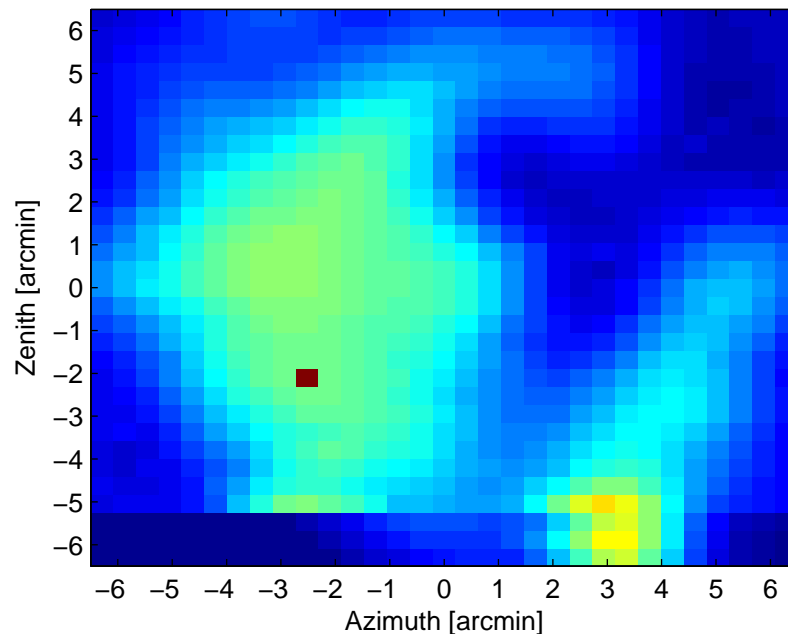


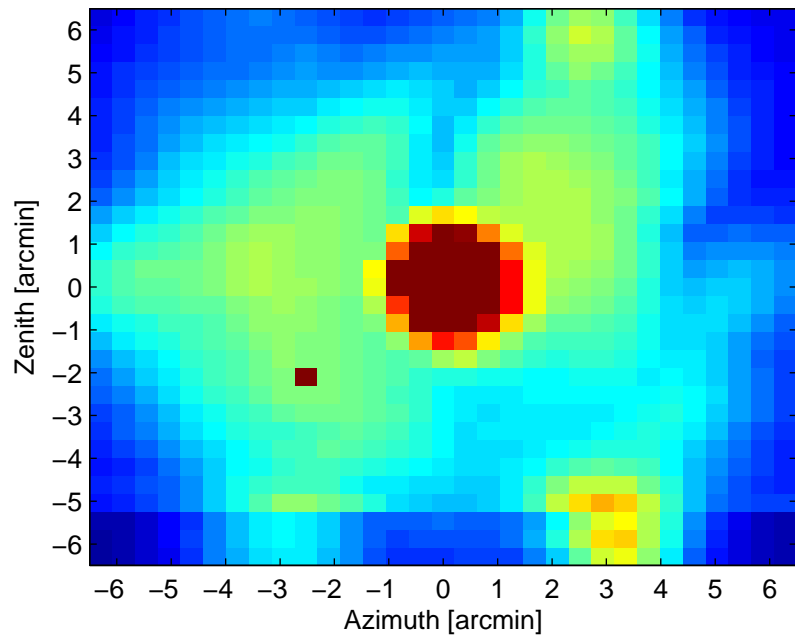
Sensitivity – pol a  
Averaged across freq.



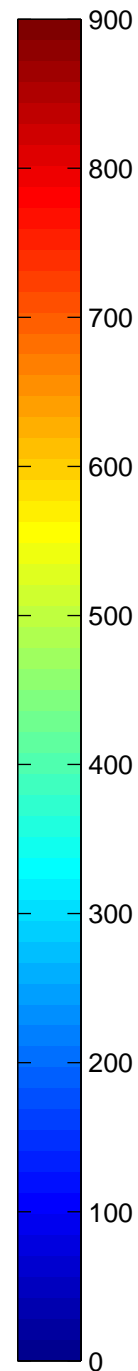
Sensitivity – pol b  
Averaged across freq.



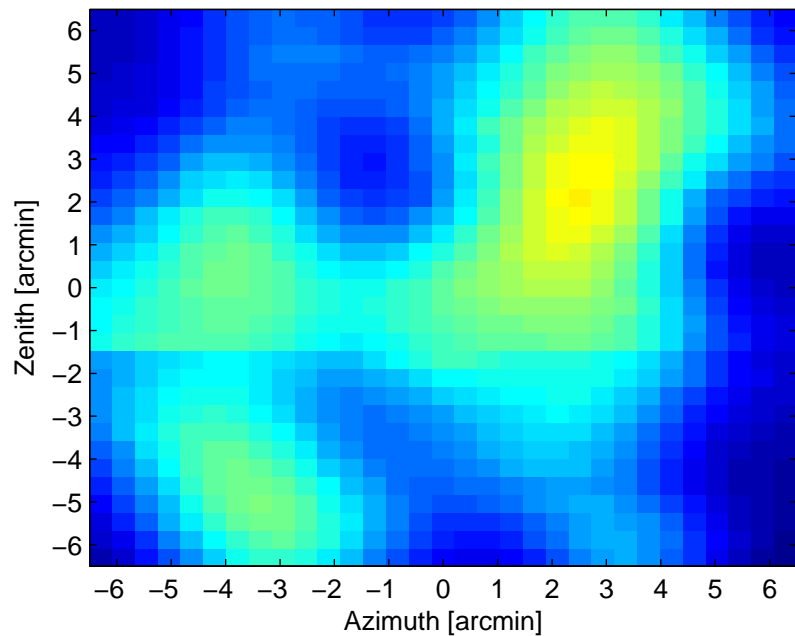
Sensitivity – pol a+b  
Averaged across freq.



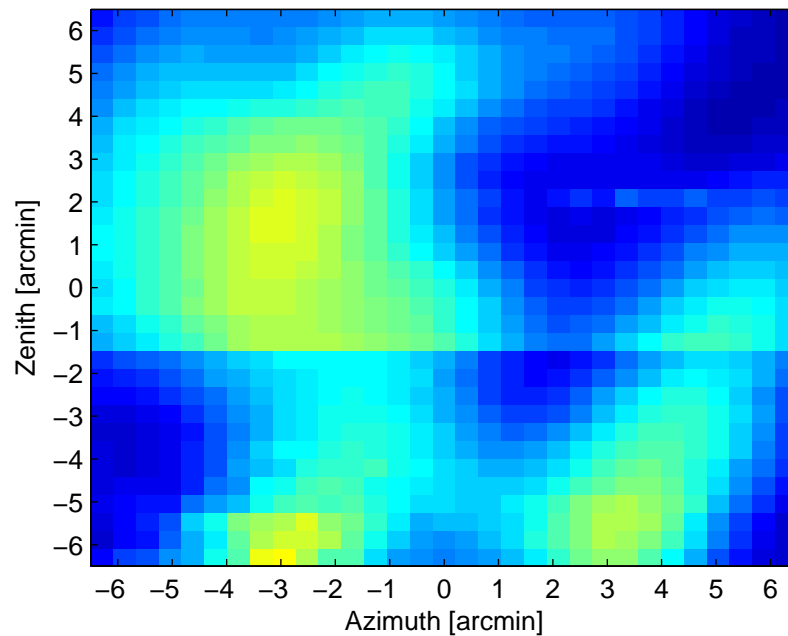
Observation:  
08\_02\_2013\_evening\_31x31  
Freq: 1665.3 – 1667.2 MHz  
Source: J2014p235  
Flux: 13.600 Jy  
Noise pointing used: before grid  
Bins used: [130 131 132 133 134 135  
136 137 138 139 140 141 142 143 144  
145 146 147 148 149 150]



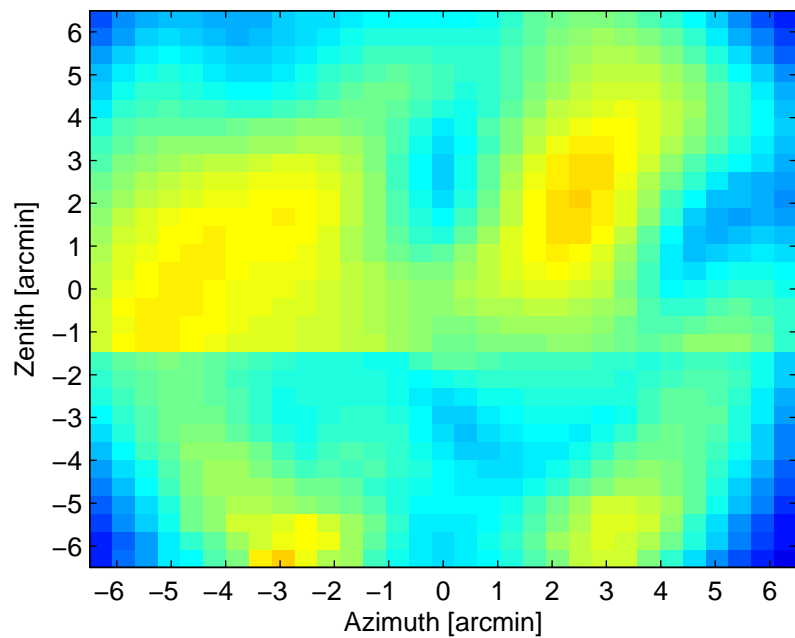
Sensitivity – pol a  
Averaged across freq.



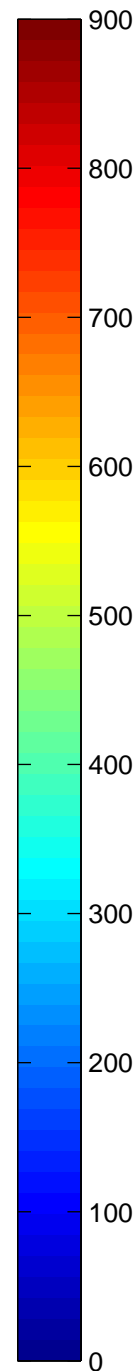
Sensitivity – pol b  
Averaged across freq.



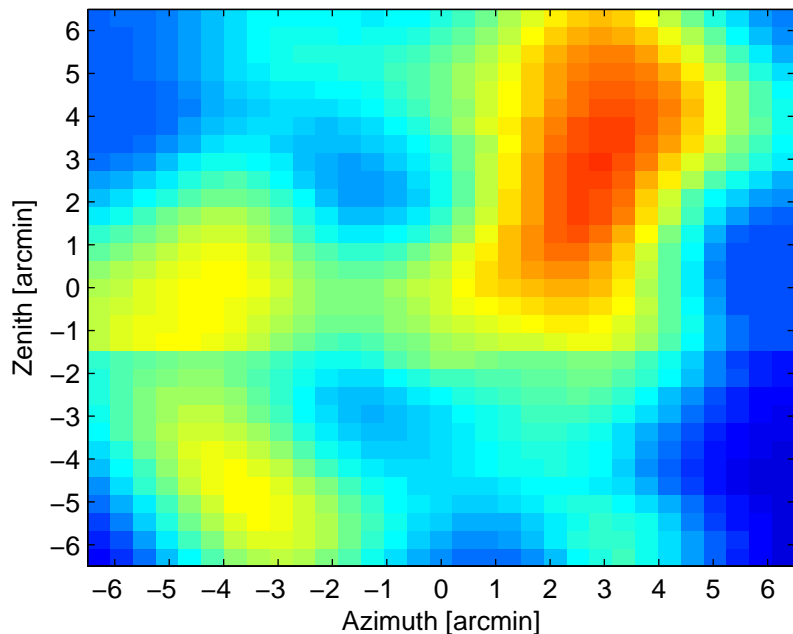
Sensitivity – pol a+b  
Averaged across freq.



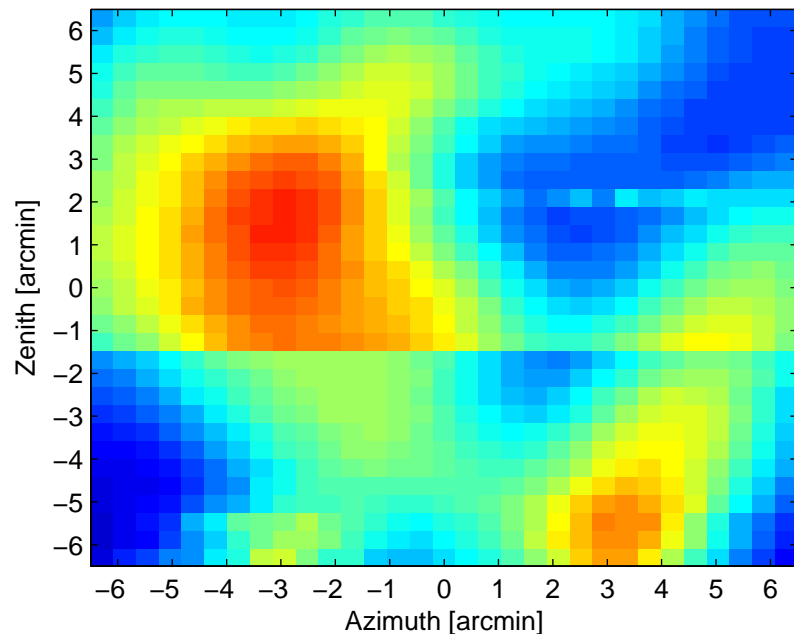
Observation:  
08\_02\_2013\_evening\_31x31\_2  
Freq: 1401.3 – 1402.2 MHz  
Source: J2232+117  
Flux: 7.200 Jy  
Noise pointing used: before grid  
Bins used: [140 141 142 143 144 145  
146 147 148 149 150]



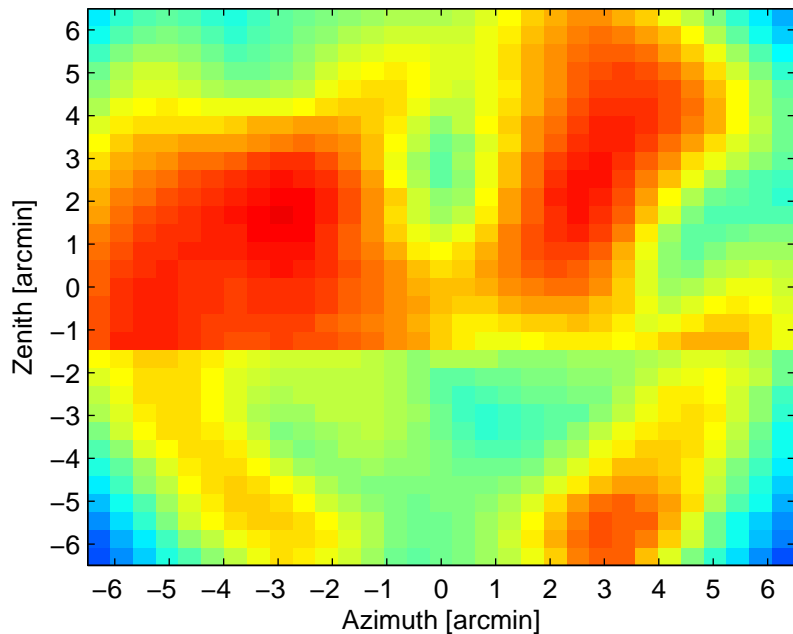
Sensitivity – pol a  
Averaged across freq.



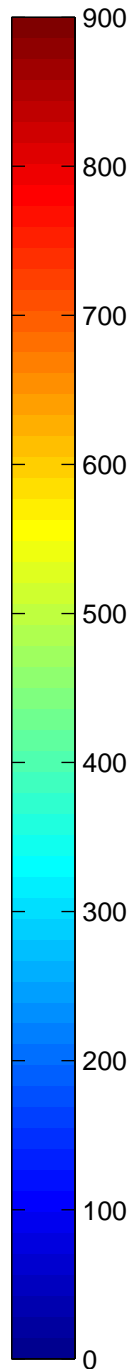
Sensitivity – pol b  
Averaged across freq.



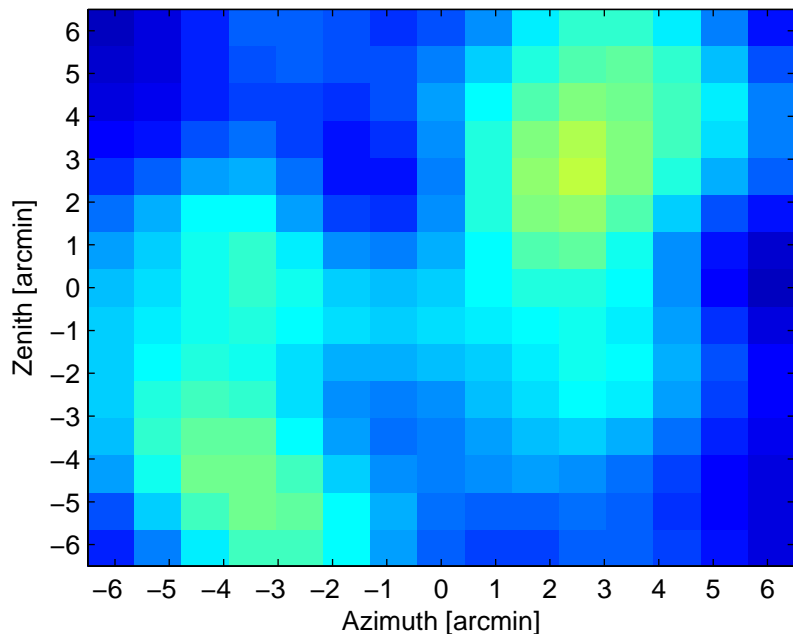
Sensitivity – pol a+b  
Averaged across freq.



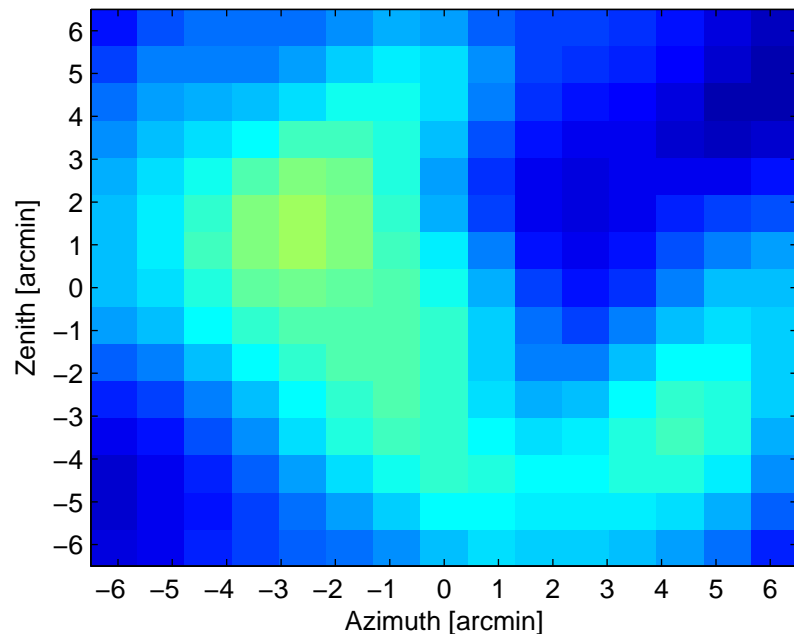
Observation:  
/08\_02\_2013\_evening\_31x31\_2  
Freq: 1399.3 – 1402.2 MHz  
Source: J2232+117  
Flux: 7.200 Jy  
Noise pointing used: after grid  
Bins used: [120 121 122 123 124 125  
126 127 128 129 130 131 132 133 134  
135 136 137 138 139 140 141 142 143  
144 145 146 147 148 149 150]



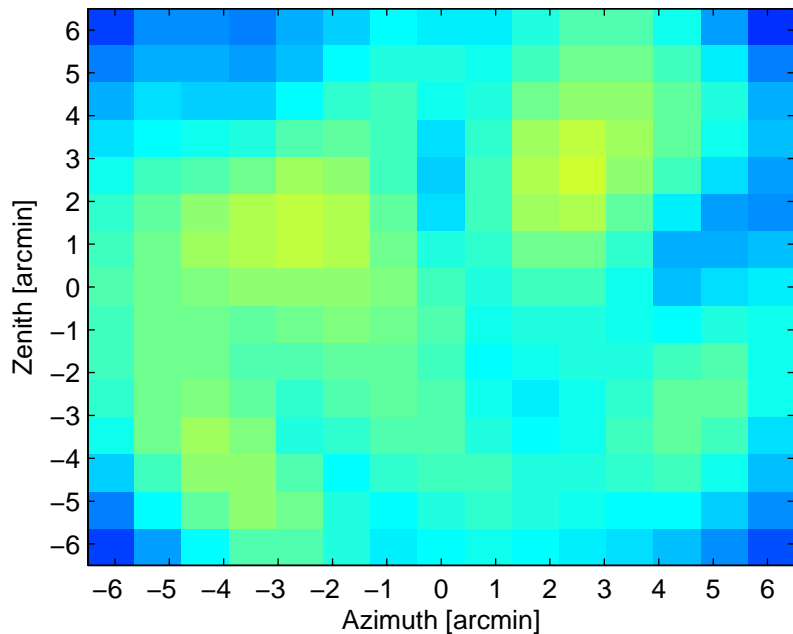
Sensitivity – pol a  
Averaged across freq.



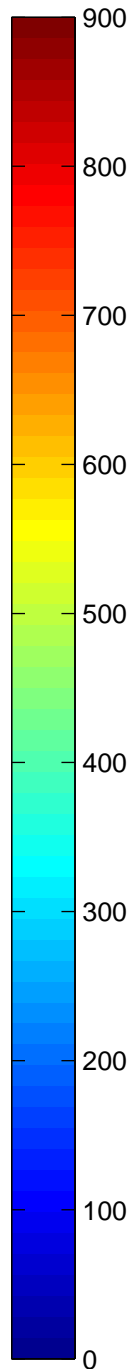
Sensitivity – pol b  
Averaged across freq.



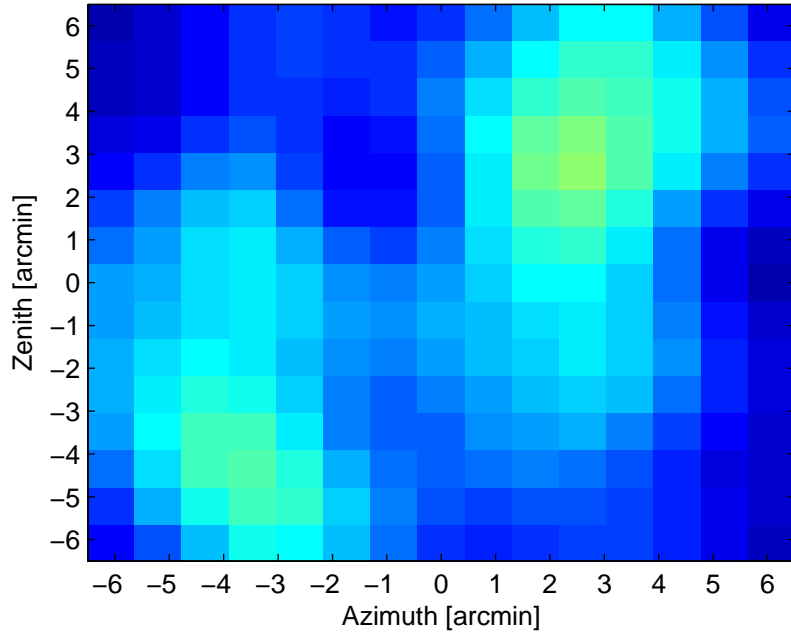
Sensitivity – pol a+b  
Averaged across freq.



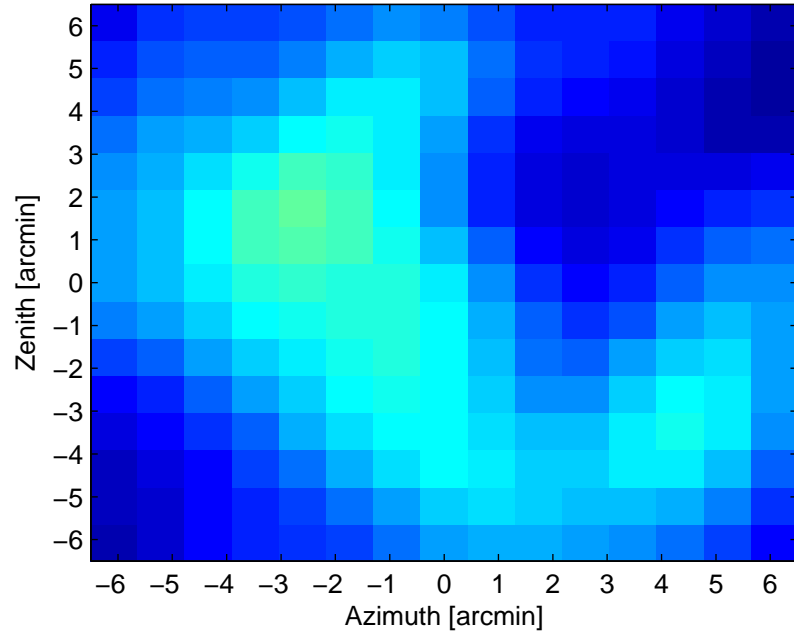
Freq: 1392.5 – 1397.4 MHz  
Source: J0318p164  
Flux: 7.689 Jy  
Noise pointing used: before grid  
Bins used: [50 51 52 53 54 55 56 57 58  
59 60 61 62 63 64 65 66 67 68 69 70 71  
72 73 74 75 76 77 78 79 80 81 82 83 84  
85 86 87 88 89 90 91 92 93 94 95 96 97  
98 99 100]



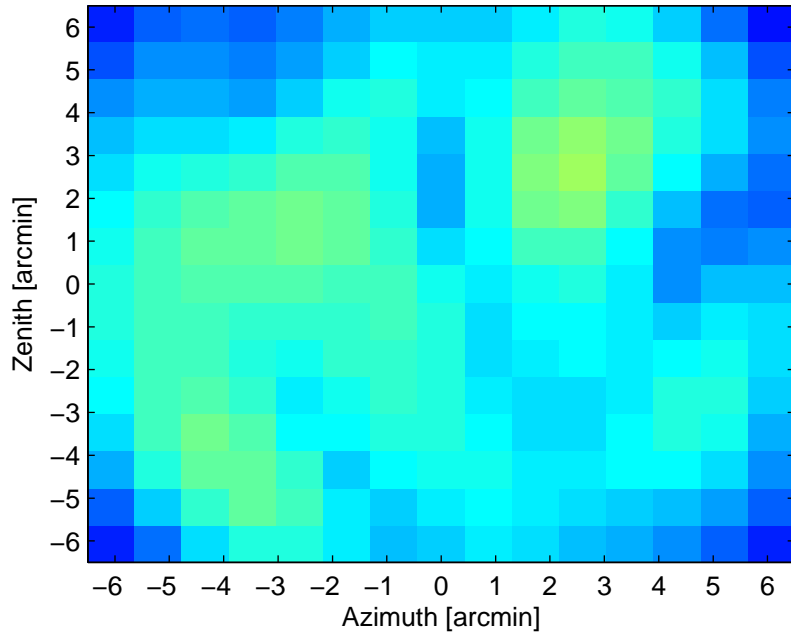
Sensitivity – pol a  
Averaged across freq.



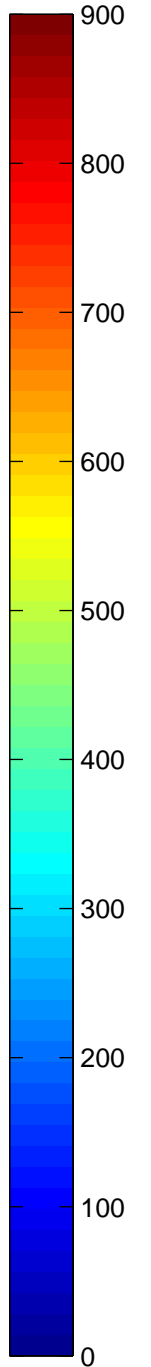
Sensitivity – pol b  
Averaged across freq.



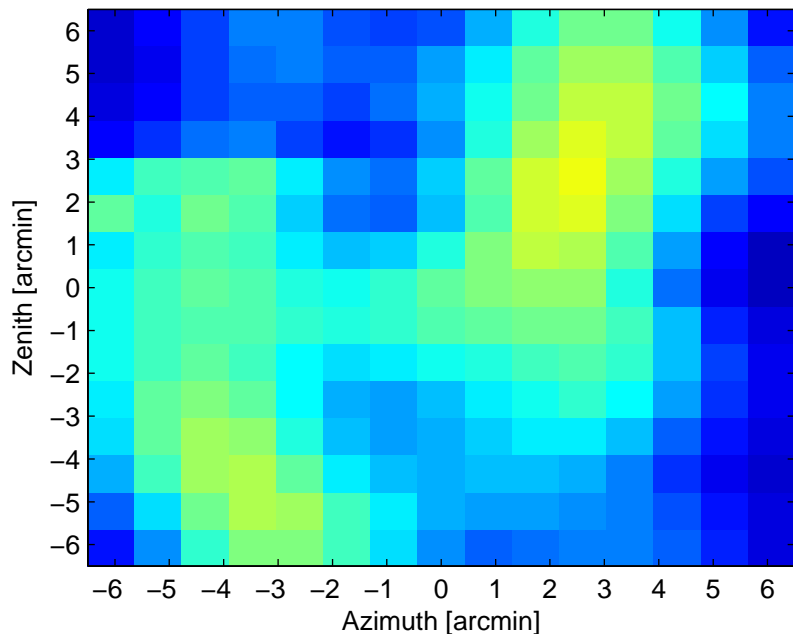
Sensitivity – pol a+b  
Averaged across freq.



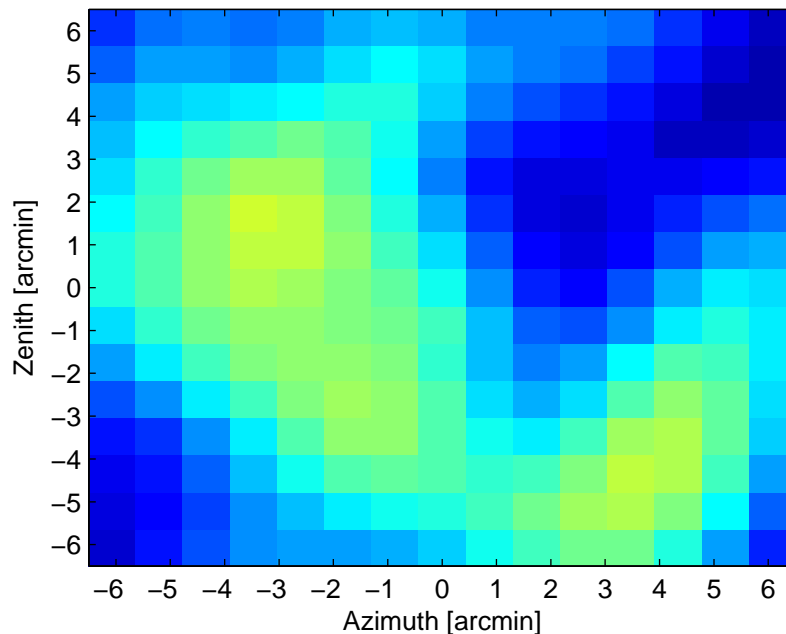
Freq: 1392.5 – 1397.4 MHz  
Source: J0318p164  
Flux: 7.689 Jy  
Noise pointing used: after grid  
Bins used: [50 51 52 53 54 55 56 57 58  
59 60 61 62 63 64 65 66 67 68 69 70 71  
72 73 74 75 76 77 78 79 80 81 82 83 84  
85 86 87 88 89 90 91 92 93 94 95 96 97  
98 99 100]



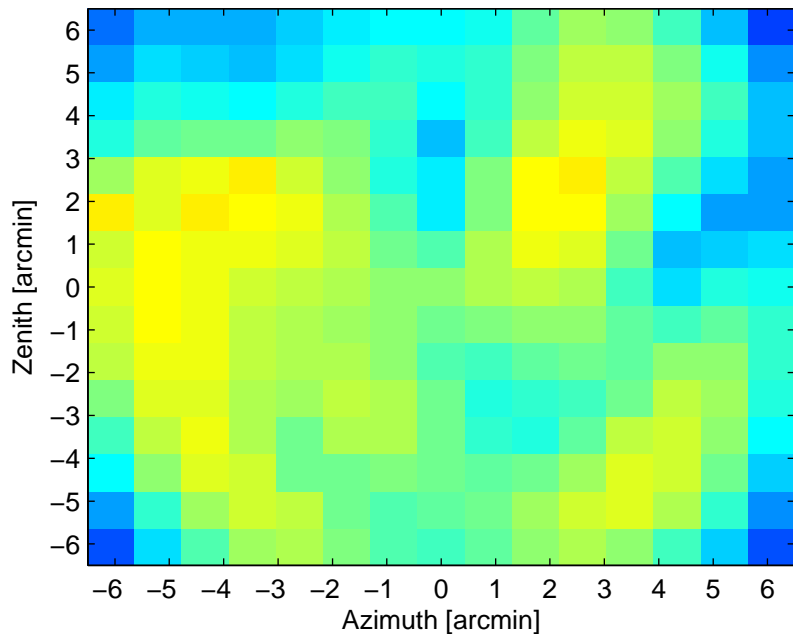
Sensitivity – pol a  
Averaged across freq.



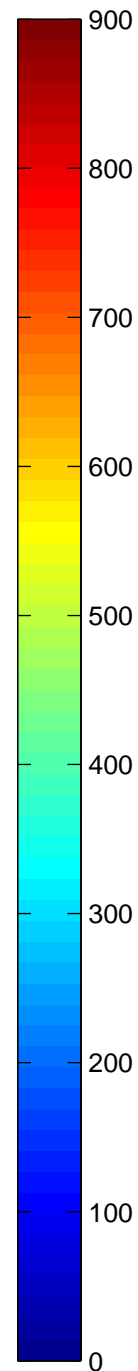
Sensitivity – pol b  
Averaged across freq.



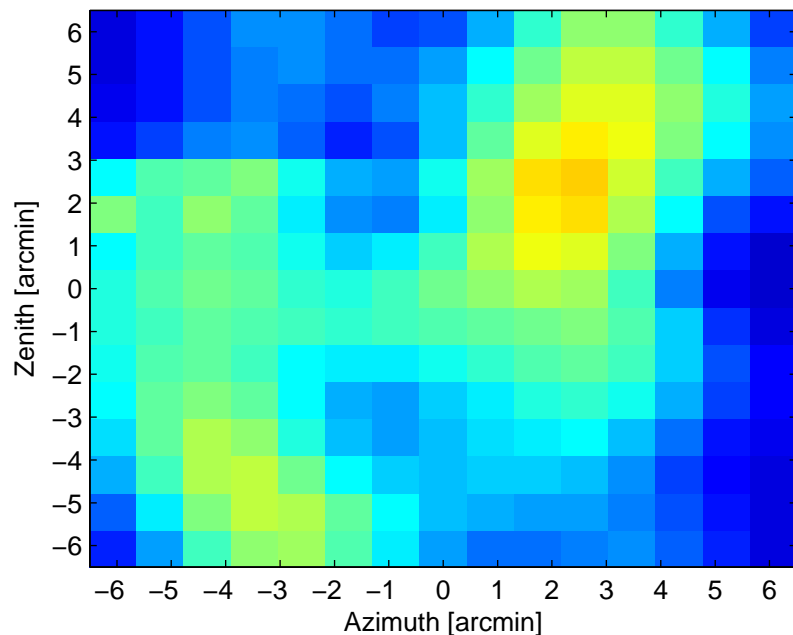
Sensitivity – pol a+b  
Averaged across freq.



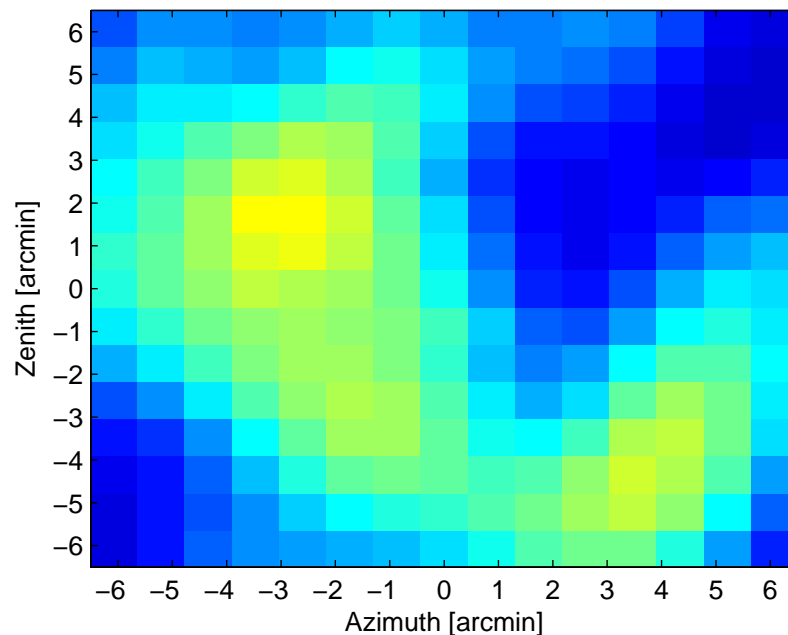
Freq: 1392.5 – 1397.4 MHz  
Source: J2232p117  
Flux: 7.200 Jy  
Noise pointing used: before grid  
Bins used: [50 51 52 53 54 55 56 57 58  
59 60 61 62 63 64 65 66 67 68 69 70 71  
72 73 74 75 76 77 78 79 80 81 82 83 84  
85 86 87 88 89 90 91 92 93 94 95 96 97  
98 99 100]



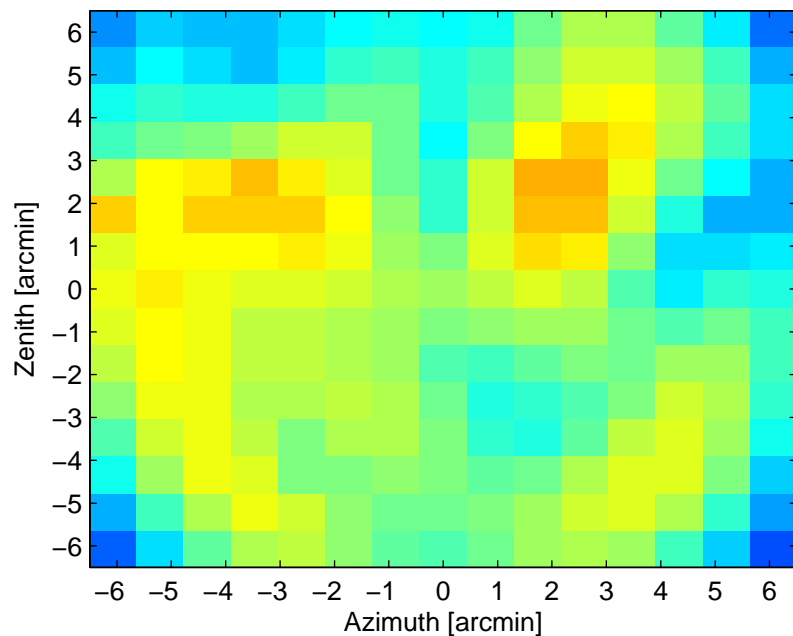
Sensitivity – pol a  
Averaged across freq.



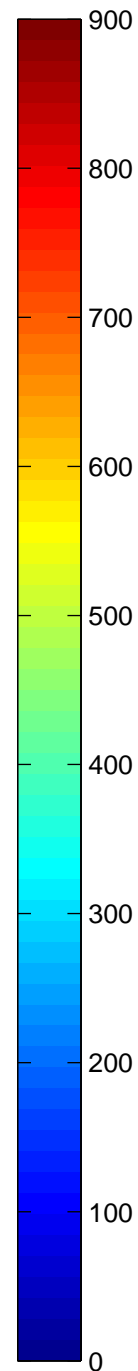
Sensitivity – pol b  
Averaged across freq.



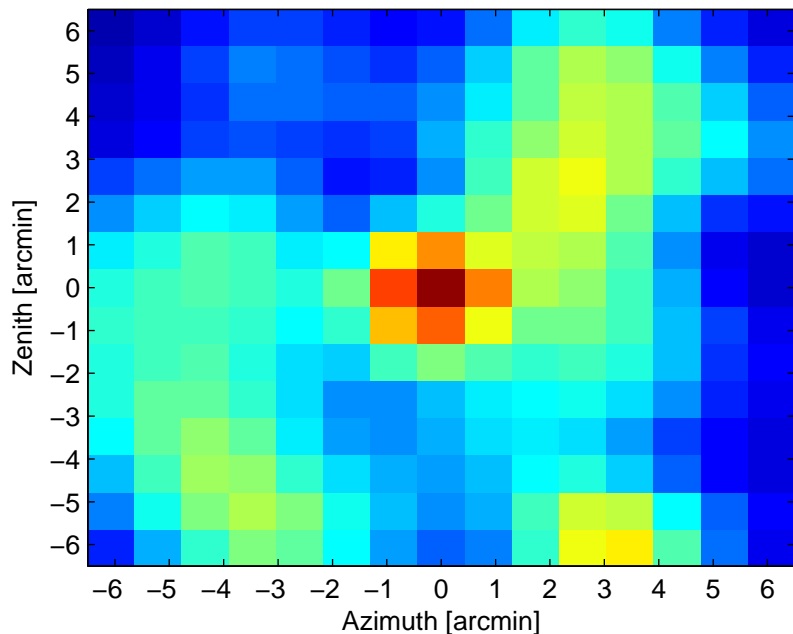
Sensitivity – pol a+b  
Averaged across freq.



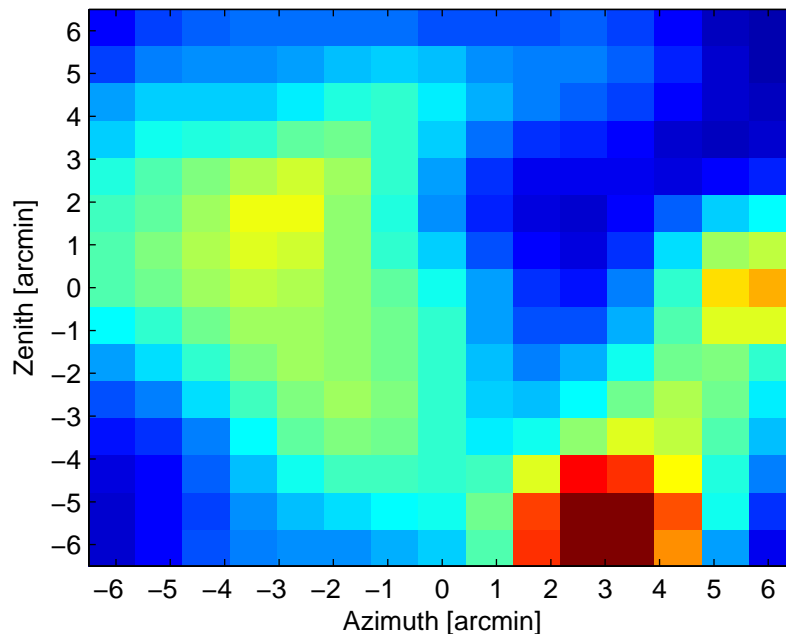
Freq: 1392.5 – 1397.4 MHz  
Source: J2232p117  
Flux: 7.200 Jy  
Noise pointing used: after grid  
Bins used: [50 51 52 53 54 55 56 57 58  
59 60 61 62 63 64 65 66 67 68 69 70 71  
72 73 74 75 76 77 78 79 80 81 82 83 84  
85 86 87 88 89 90 91 92 93 94 95 96 97  
98 99 100]



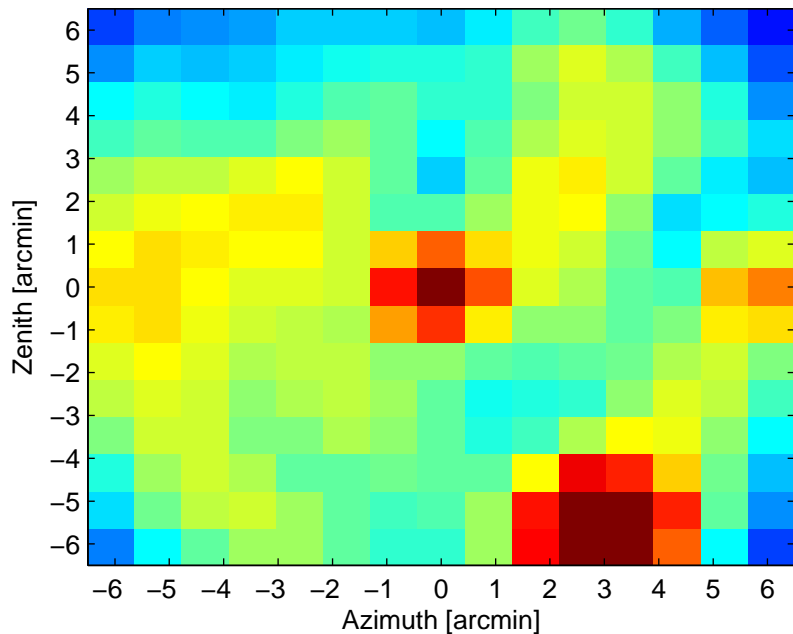
Sensitivity – pol a  
Averaged across freq.



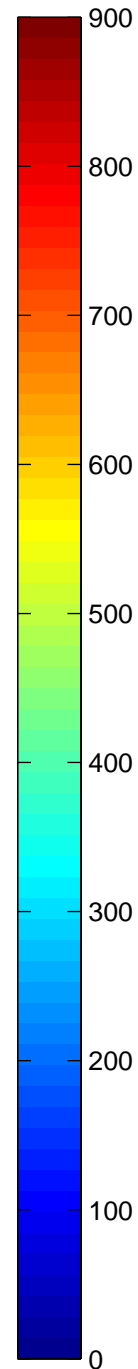
Sensitivity – pol b  
Averaged across freq.



Sensitivity – pol a+b  
Averaged across freq.

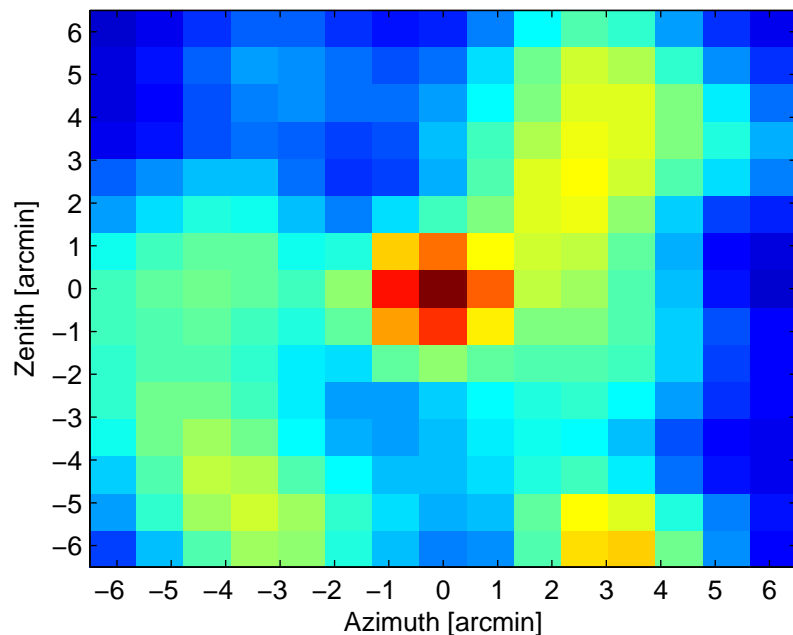


Freq: 1392.5 – 1397.4 MHz  
Source: J1330+251  
Flux: 7.000 Jy  
Noise pointing used: before grid  
Bins used: [50 51 52 53 54 55 56 57 58  
59 60 61 62 63 64 65 66 67 68 69 70 71  
72 73 74 75 76 77 78 79 80 81 82 83 84  
85 86 87 88 89 90 91 92 93 94 95 96 97  
98 99 100]

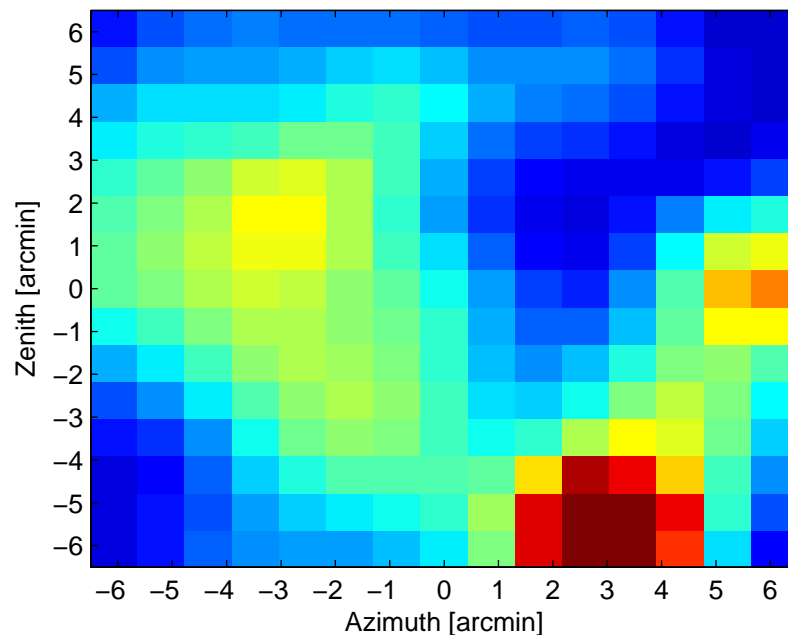




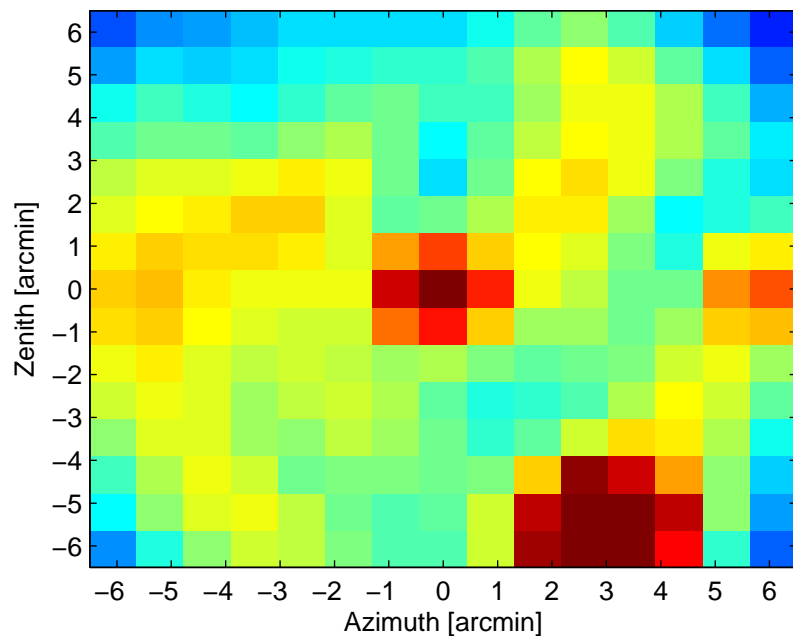
Sensitivity – pol a  
Averaged across freq.



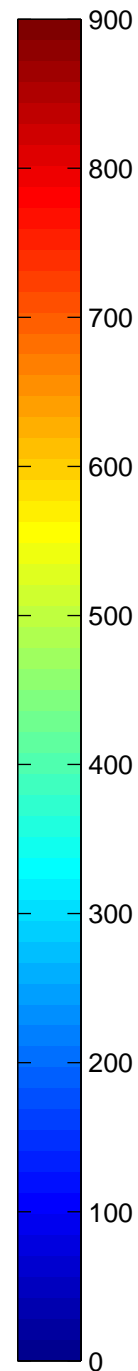
Sensitivity – pol b  
Averaged across freq.



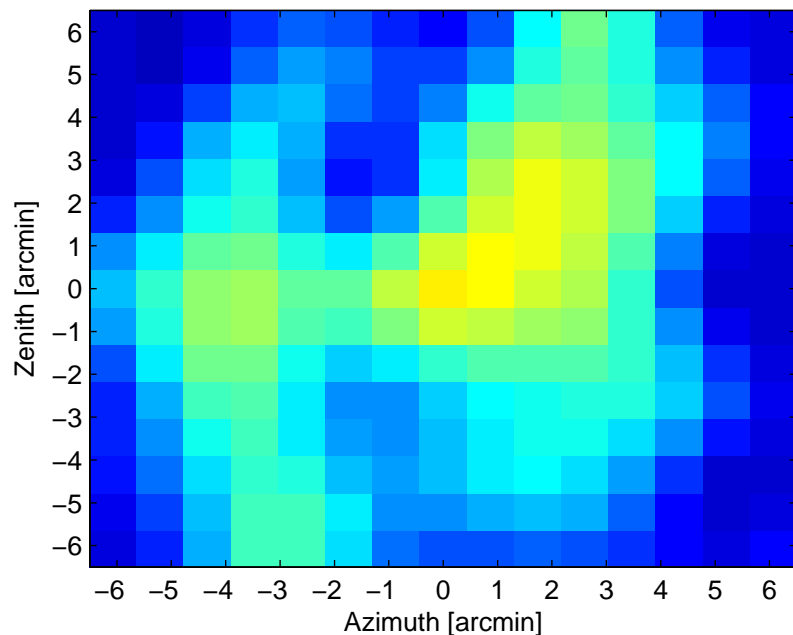
Sensitivity – pol a+b  
Averaged across freq.



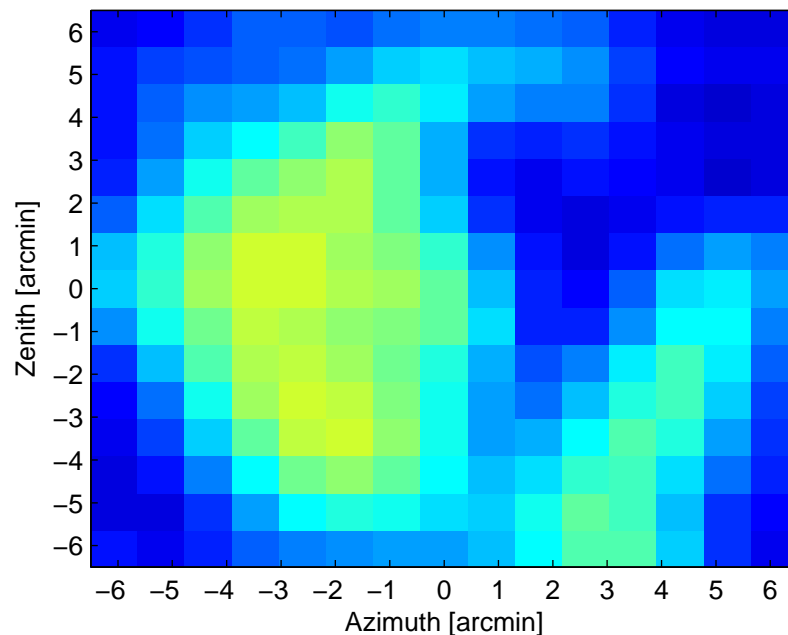
Freq: 1392.5 – 1397.4 MHz  
Source: J1330+251  
Flux: 7.000 Jy  
Noise pointing used: after grid  
Bins used: [50 51 52 53 54 55 56 57 58  
59 60 61 62 63 64 65 66 67 68 69 70 71  
72 73 74 75 76 77 78 79 80 81 82 83 84  
85 86 87 88 89 90 91 92 93 94 95 96 97  
98 99 100]



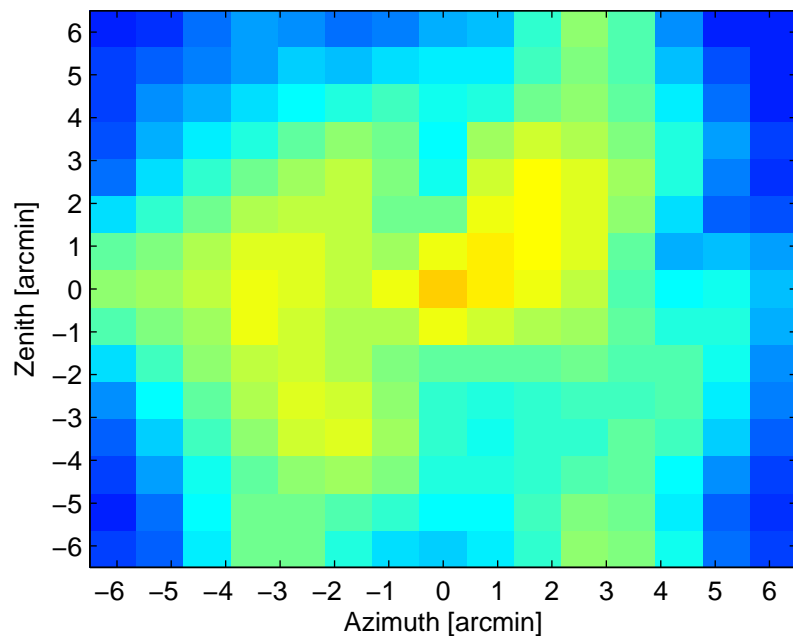
Sensitivity – pol a  
Averaged across freq.



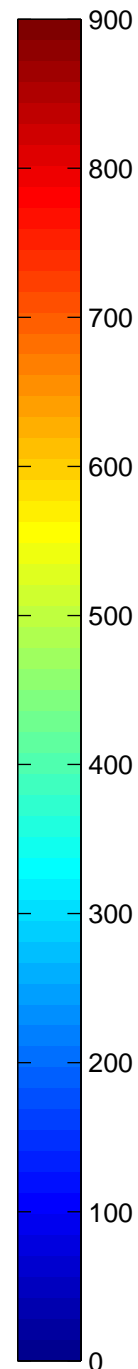
Sensitivity – pol b  
Averaged across freq.



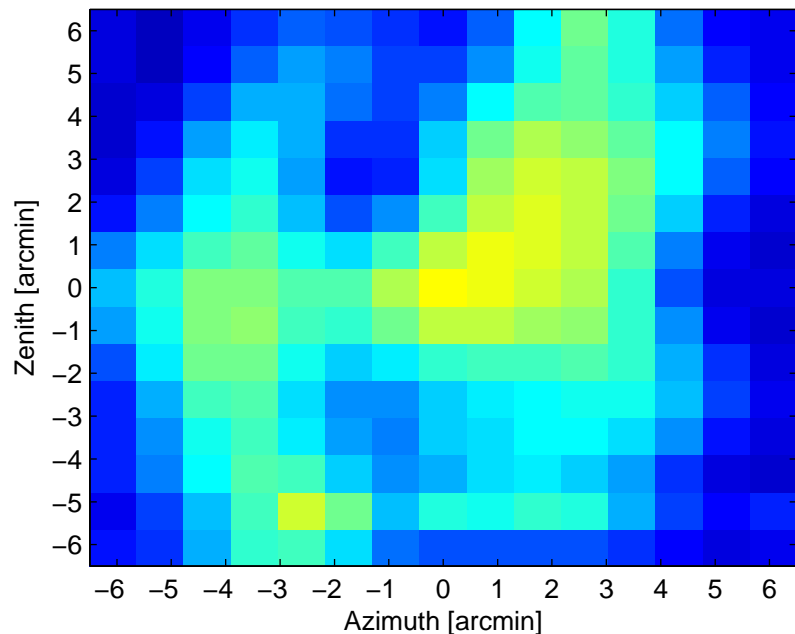
Sensitivity – pol a+b  
Averaged across freq.



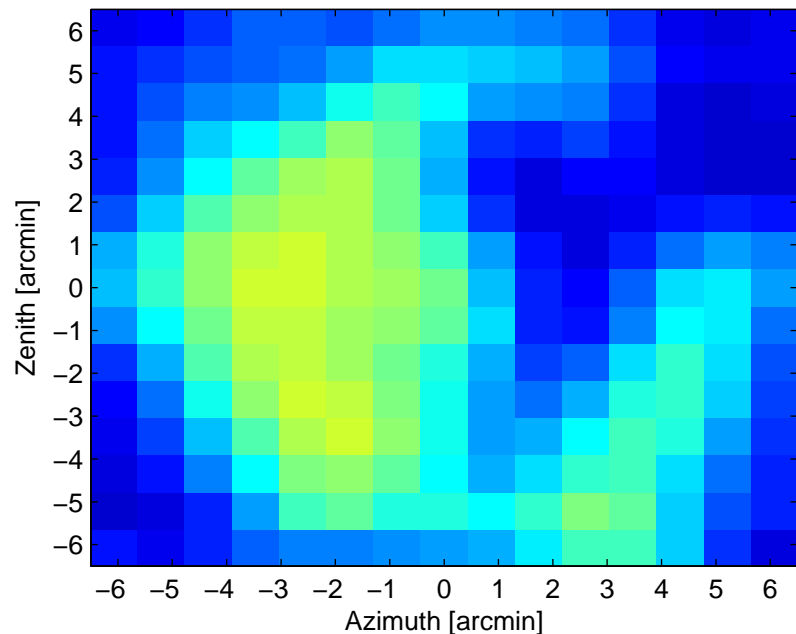
Observation:  
08\_02\_2013\_evening\_15x15  
Freq: 1398.9 – 1402.2 MHz  
Source: J1845+098  
Flux: 4.160 Jy  
Noise pointing used: before grid  
Bins used: [116 117 118 119 120 121  
122 123 124 125 126 127 128 129 130  
131 132 133 134 135 136 137 138 139  
140 141 142 143 144 145 146 147 148  
149 150]



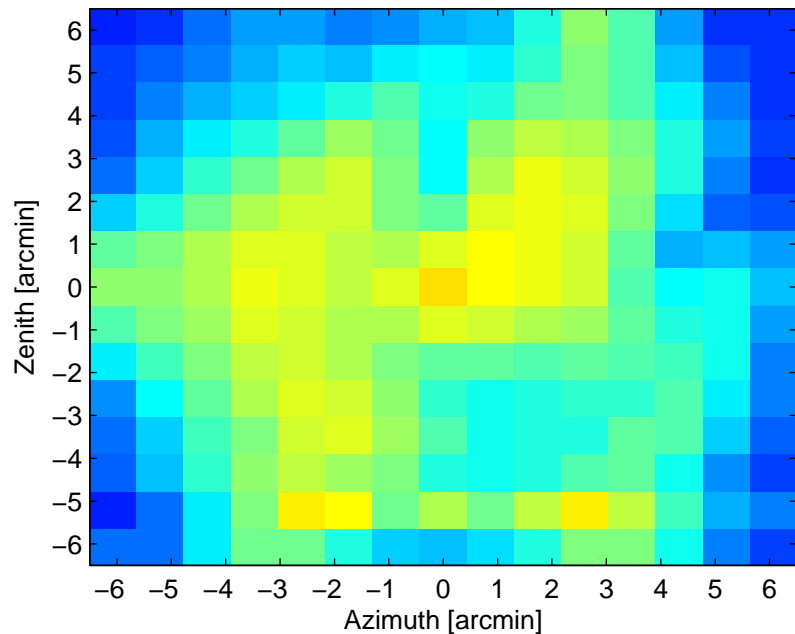
Sensitivity – pol a  
Averaged across freq.



Sensitivity – pol b  
Averaged across freq.



Sensitivity – pol a+b  
Averaged across freq.



Freq: 1397.4 – 1402.2 MHz  
Source: J1845+098  
Flux: 4.160 Jy  
Noise pointing used: after grid  
Bins used: [100 101 102 103 104 105  
106 107 108 109 110 111 112 113 114  
115 116 117 118 119 120 121 122 123  
124 125 126 127 128 129 130 131 132  
133 134 135 136 137 138 139 140 141  
142 143 144 145 146 147 148 149 150]

