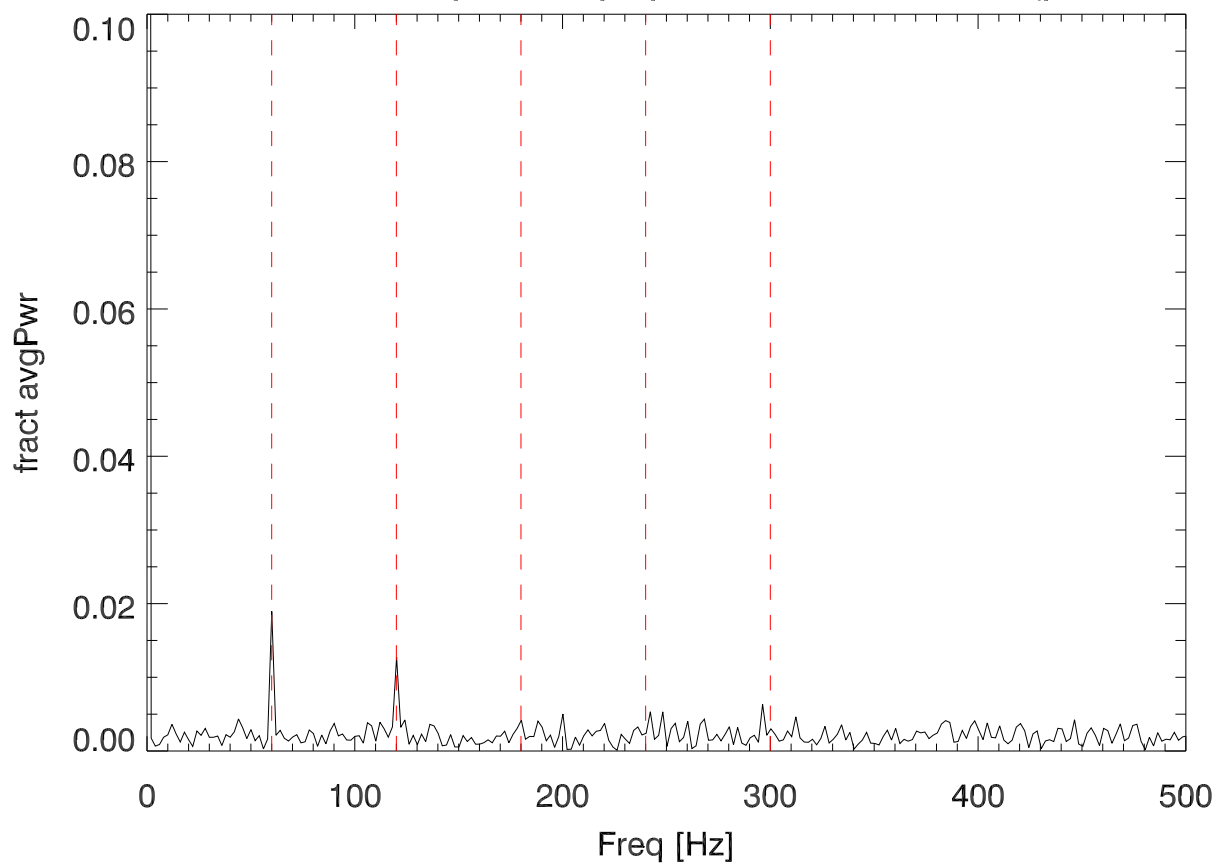


221021 sband relative amplitude tpSpc in 2295Mhz chan (polB,rbw=1Mhz)



az,el:236.0,39.8

abs(fft(spc[chn2295,tm]/mean(chn2295)))

Measure at input to postamp chassis

FieldFox: rbw=1Mhz,zeroSpan,swp=.5sec,1001pnts

60hz harmonics