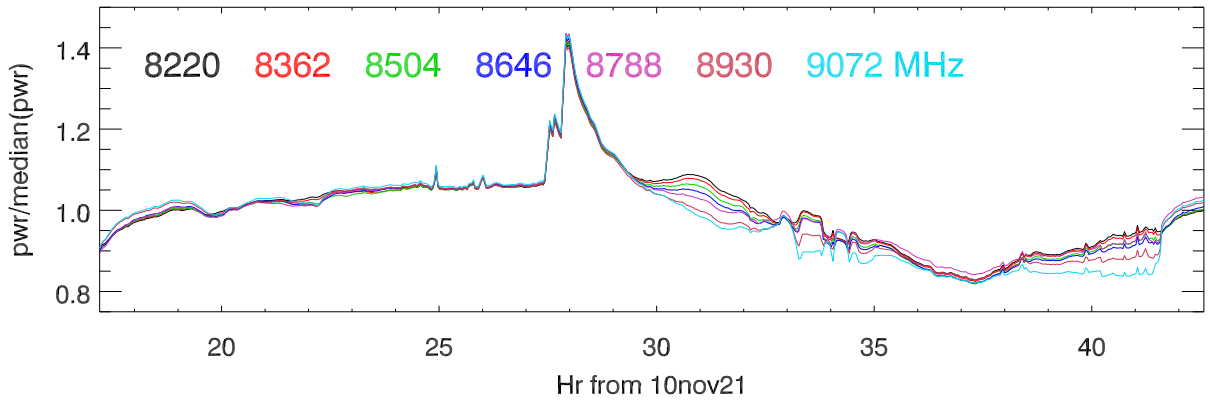
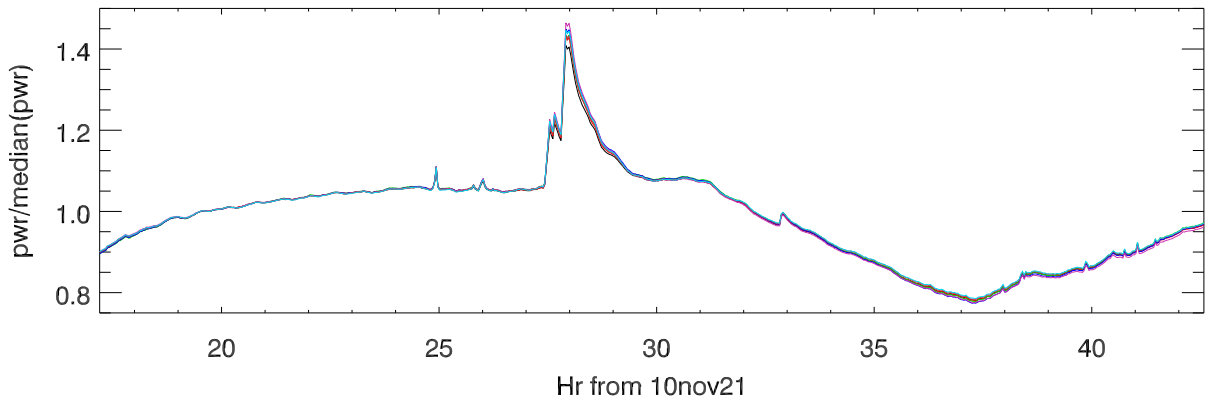


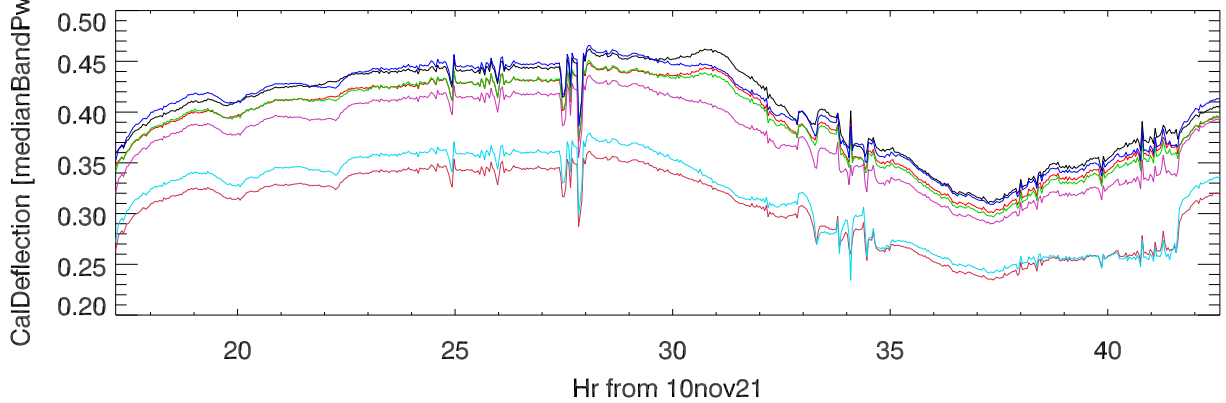
10-11nov21 bandPwr/median(bandPwr) vs hour of day. PoIA



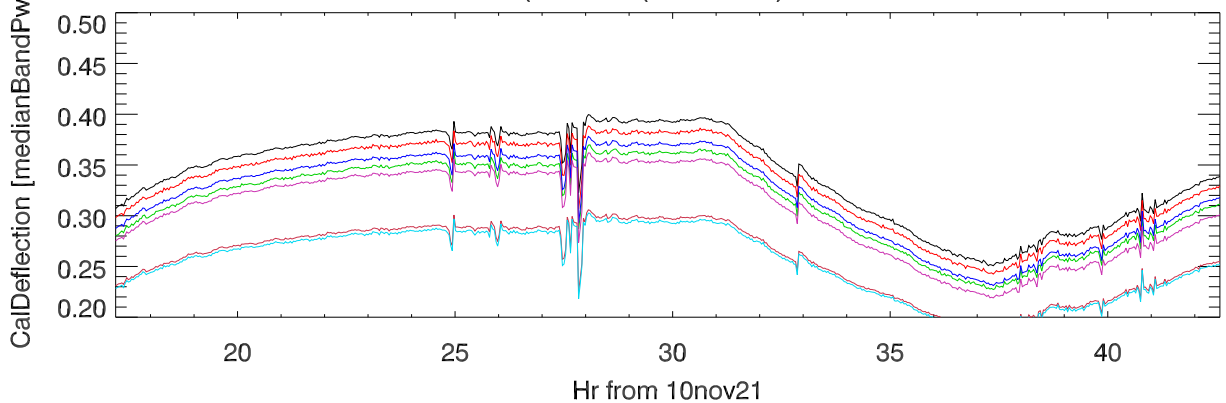
10-11nov21 bandPwr/median(bandPwr) vs hour of day. PoIB



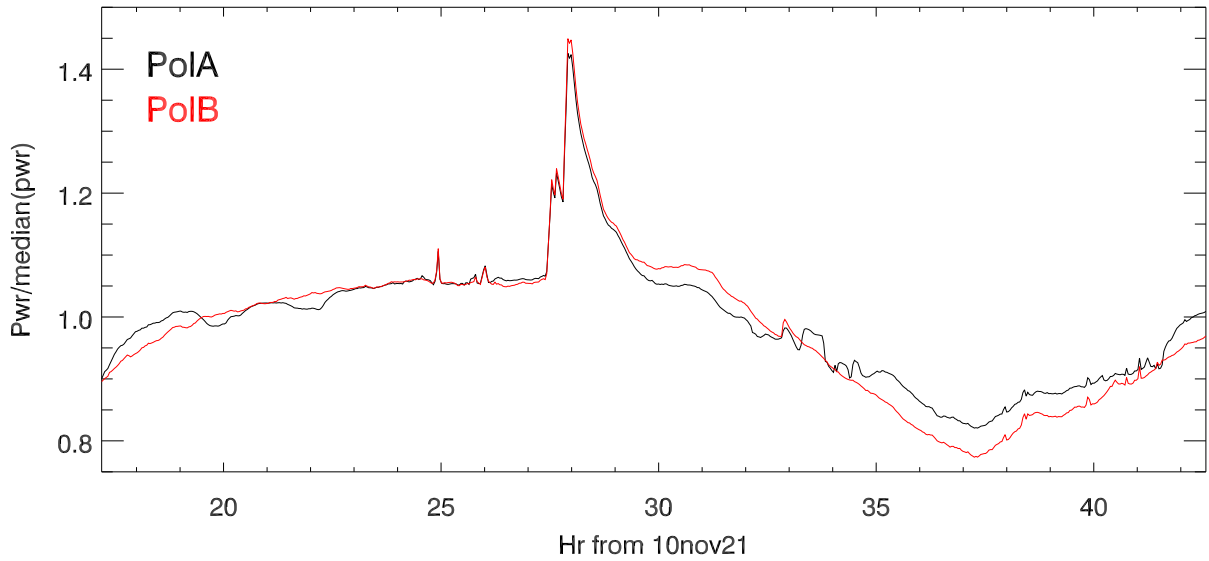
Caldeflection/(median(bandPwr) vs hour. PoIA



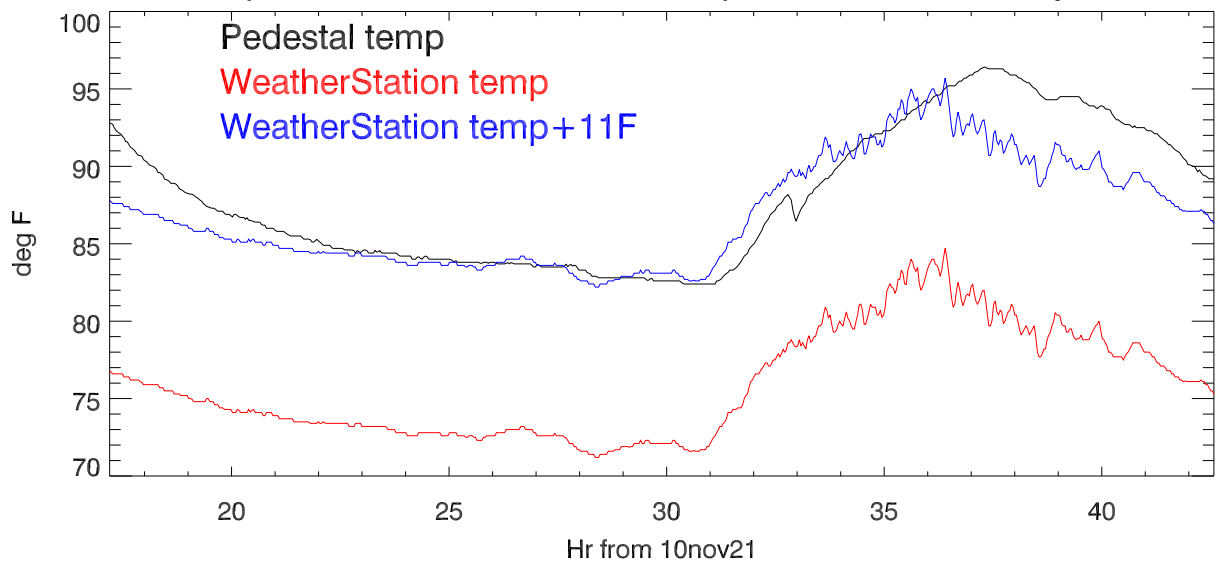
Caldeflection/(median(bandPwr) vs hour. PoIB



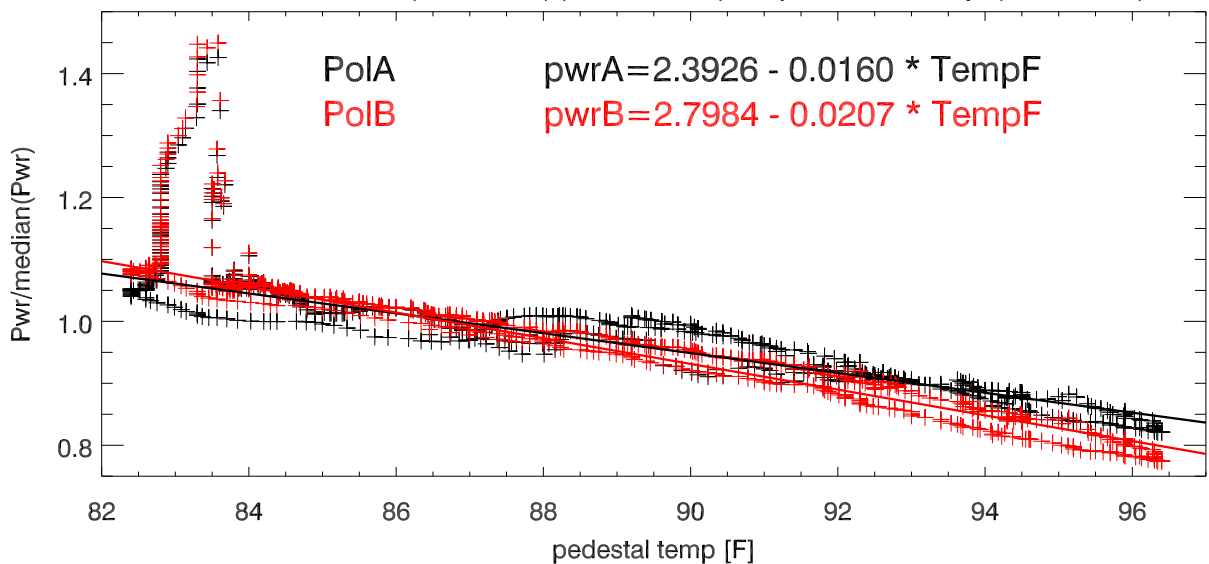
bandPwr/median(bandPwr) vs hour of day for 8648Mhz band.



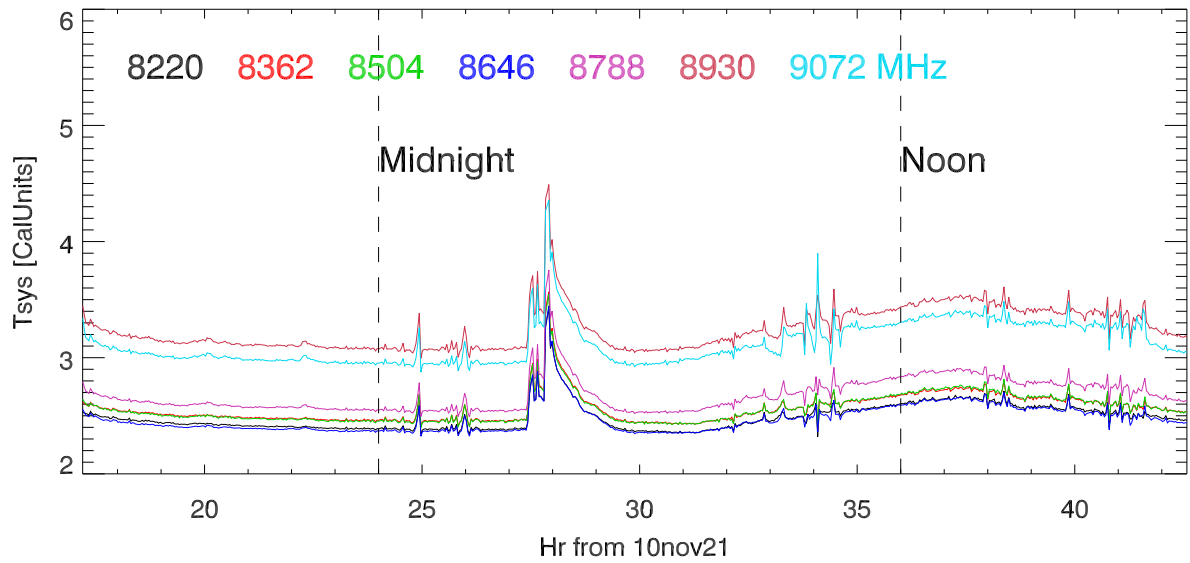
pedestal and weather station temperatures vs hour of day.



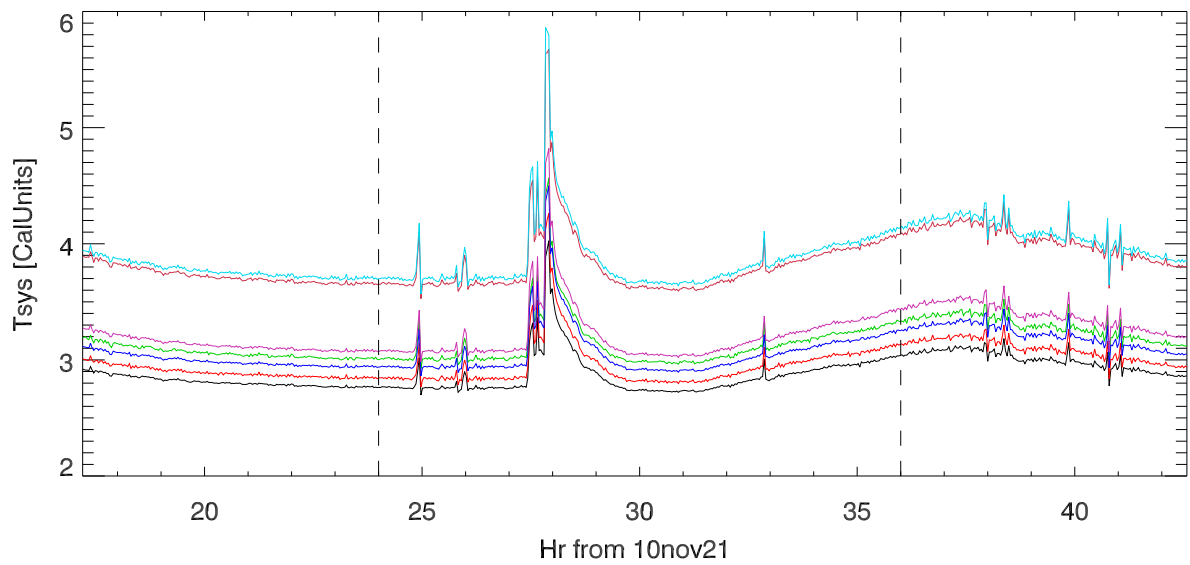
BandPwr/median(bandPwr)(band 8648) vs pedestal temp (withLinFit)



BandPwr/calDeflection vs hour PoIA



BandPwr/calDeflection vs hour PoIB



BandPwr/calDeflection (band8648) vs pedestal temp (withLinFit)

