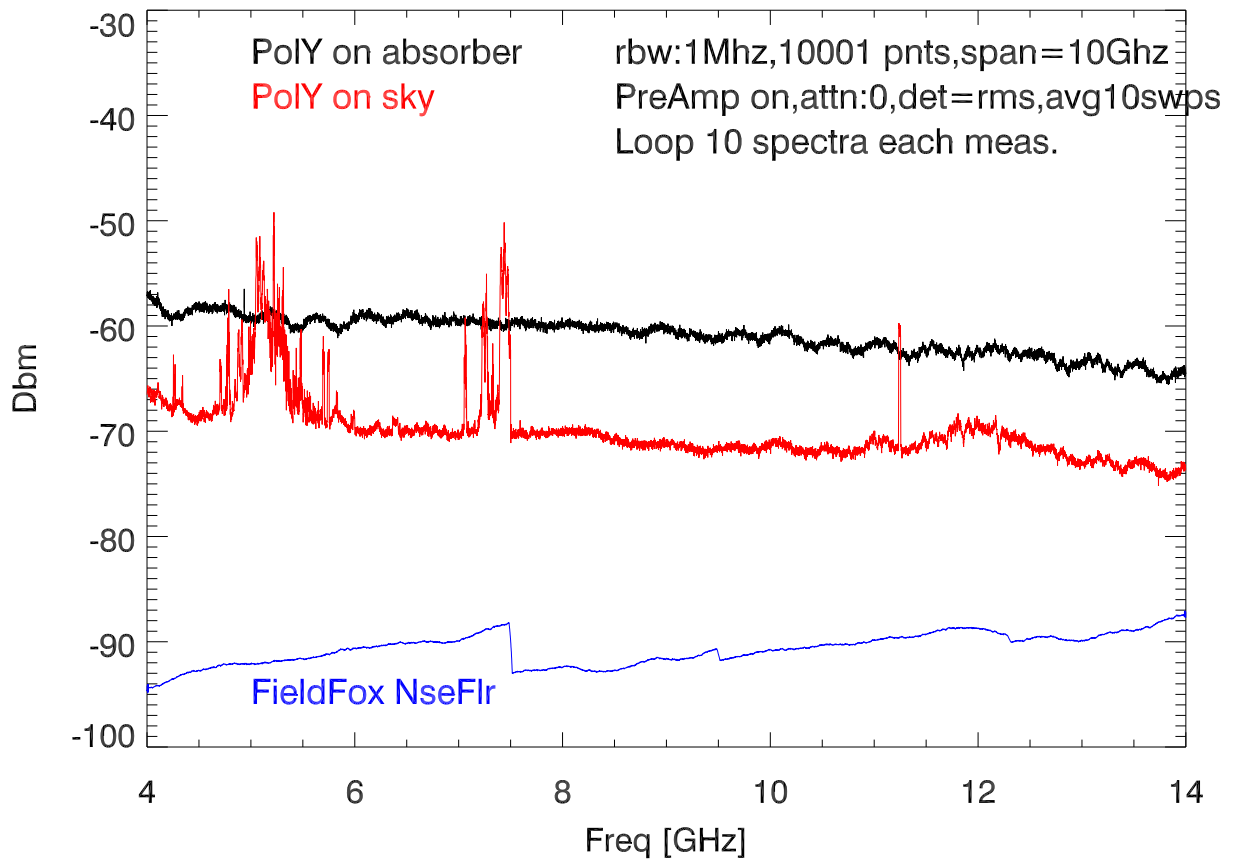
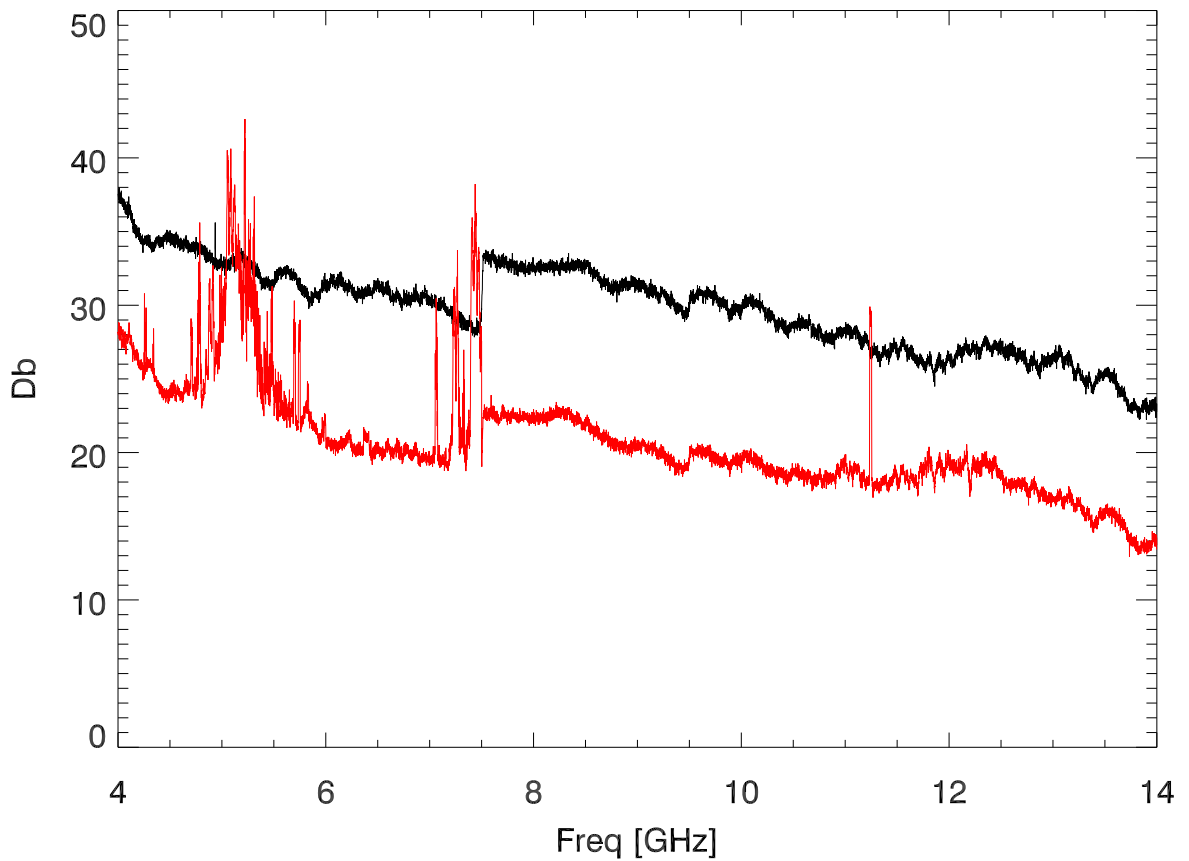


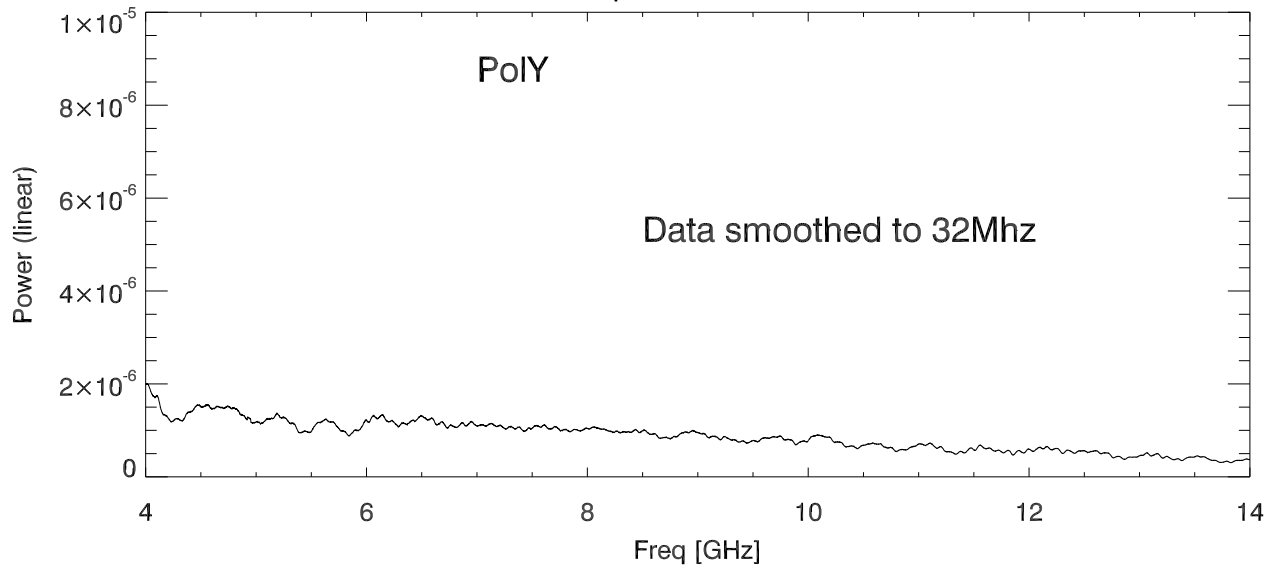
31mar23 wbRcv spectra at test range.



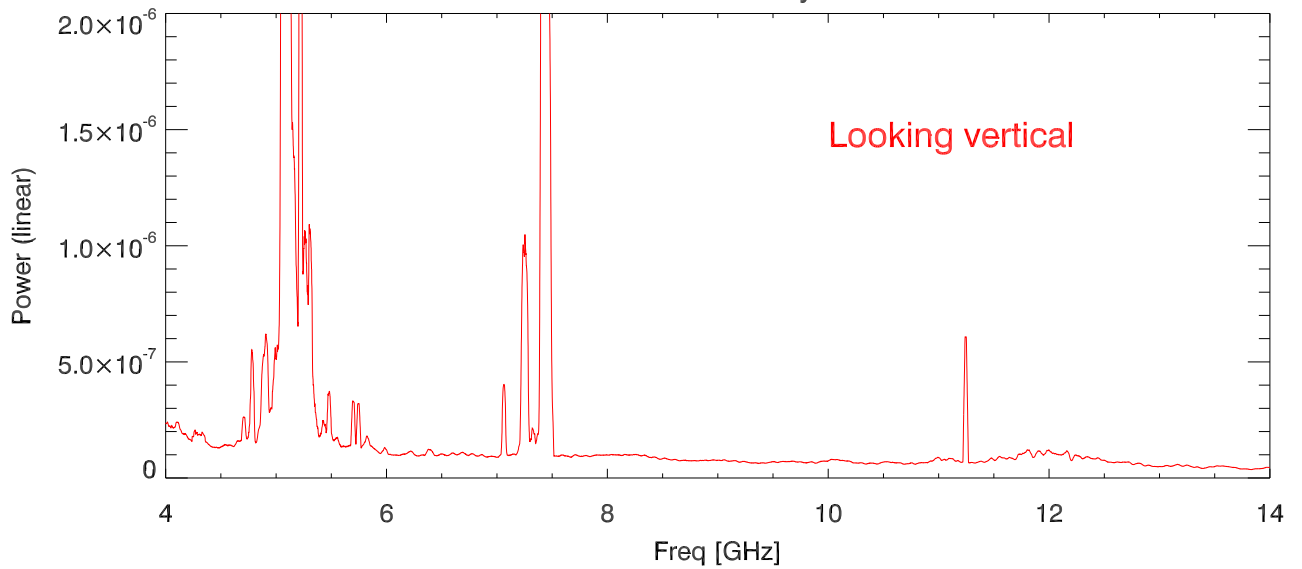
db above Noise floor for sky, abs measurement



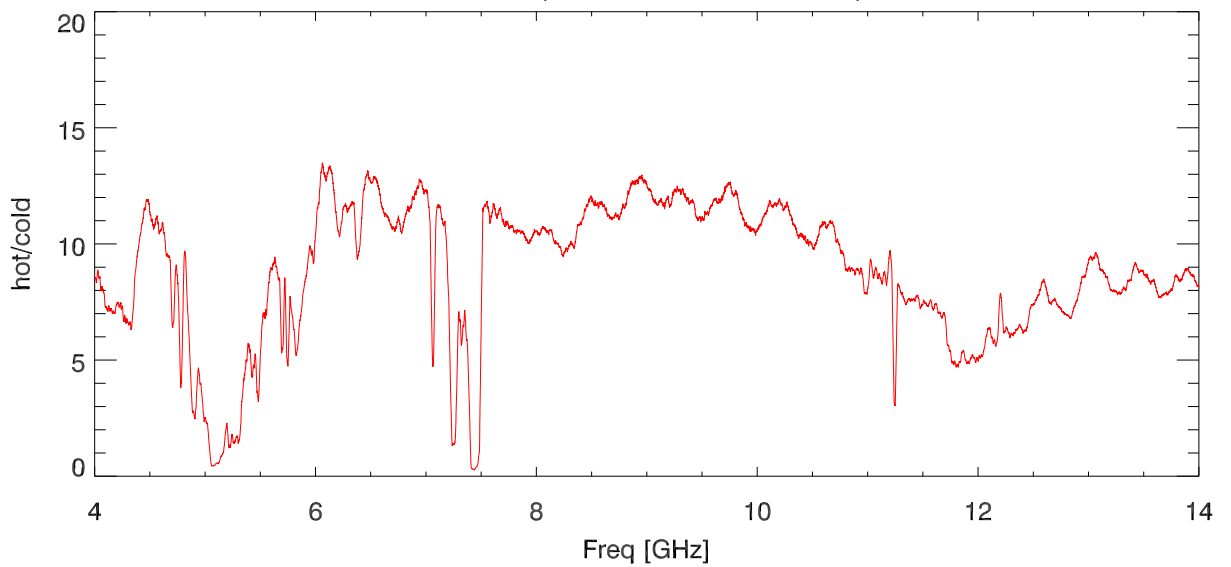
31mar23 cooled qrfh antTestBld. Power on Abs



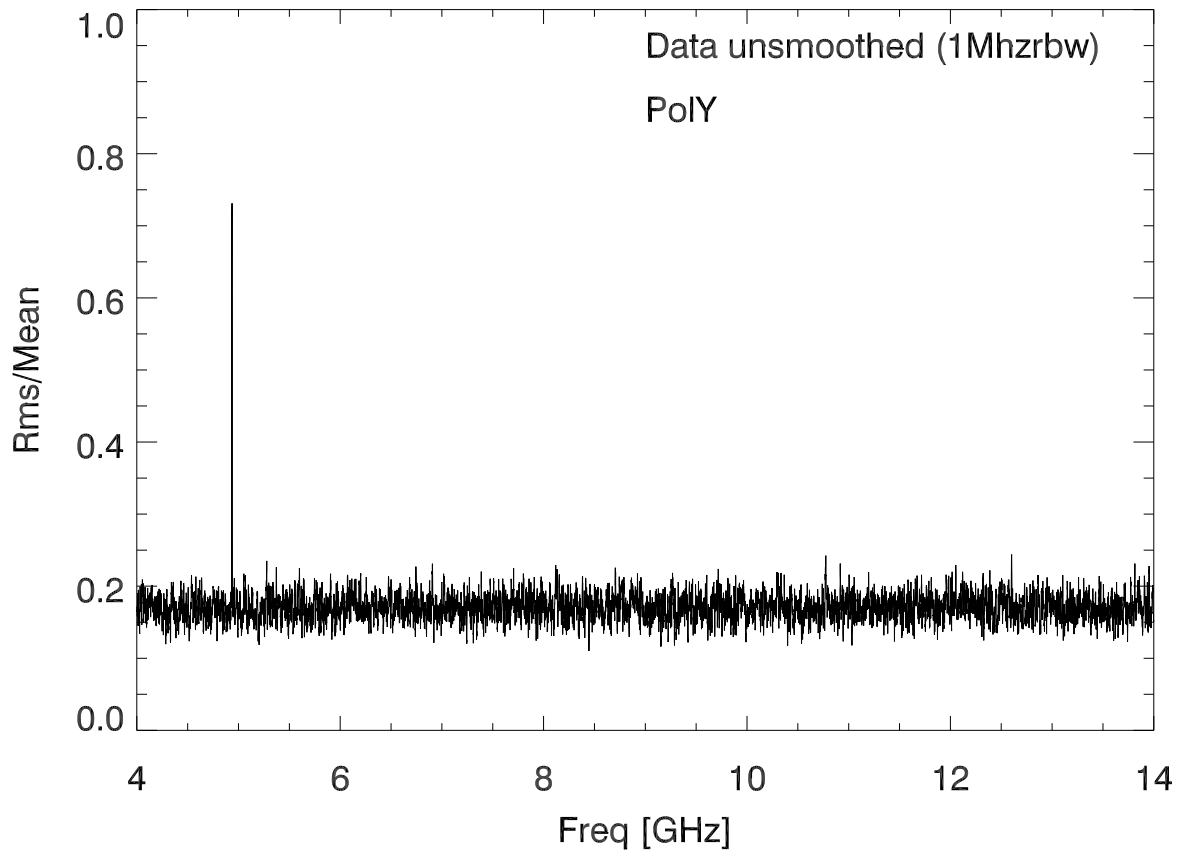
Power on sky



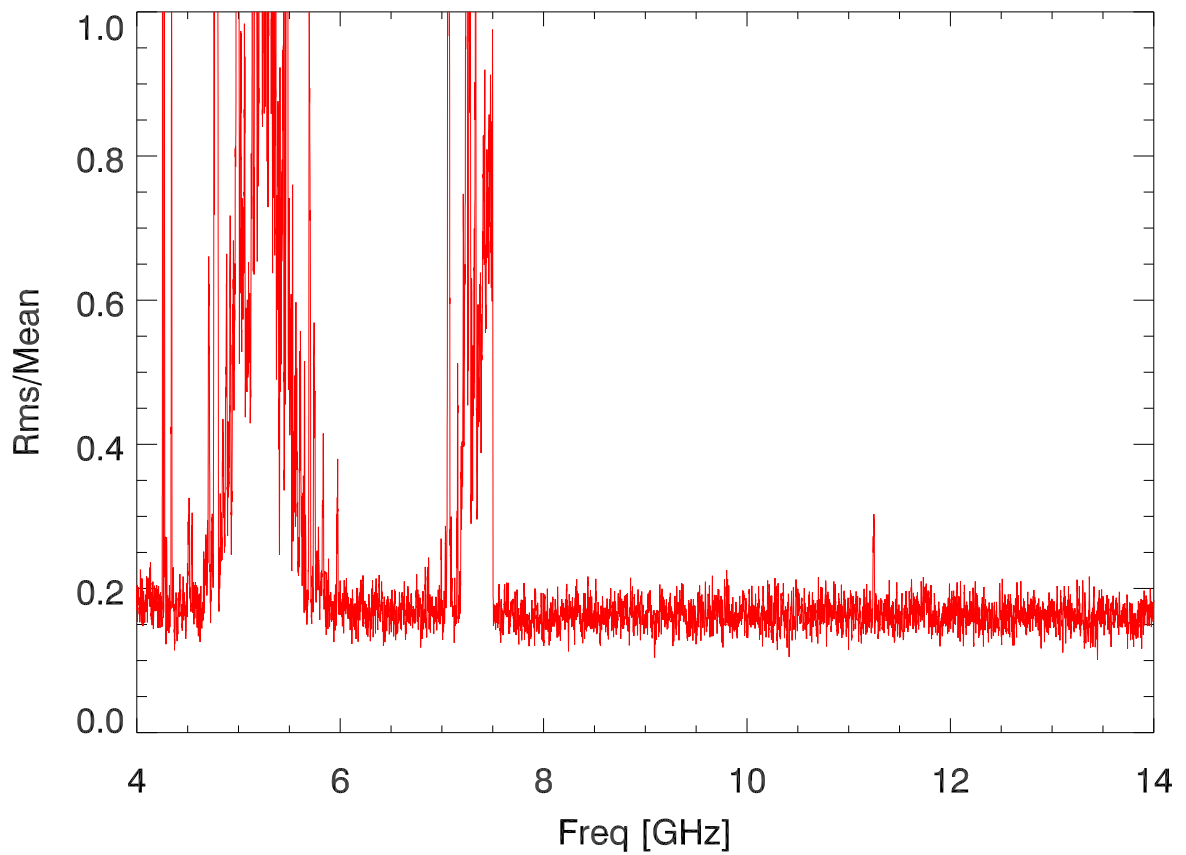
Yfactor (PowerHot/PowerCold)



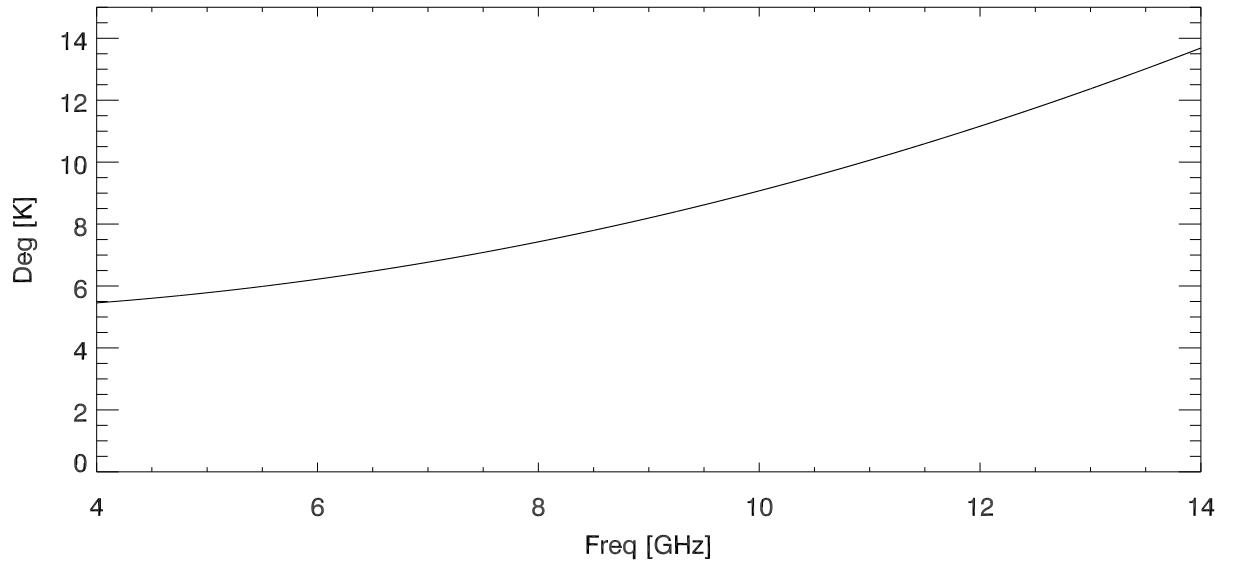
Rms/mean be freq chan for 10 spectra. (on Abs)



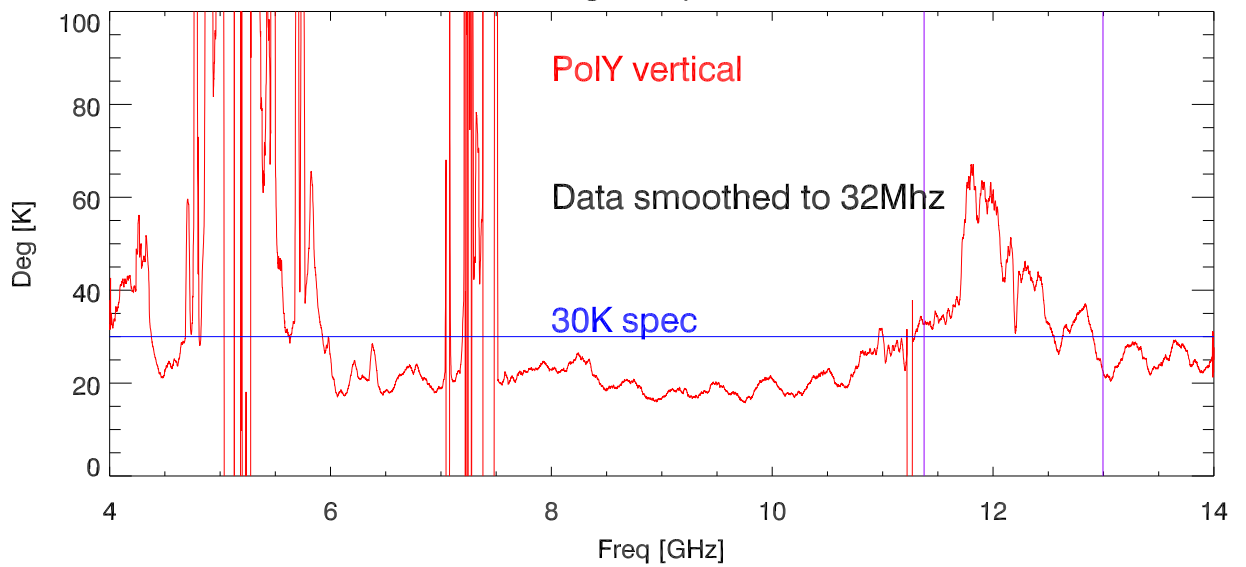
Rms/mean by freq chan for 10 spectra. (on Sky)



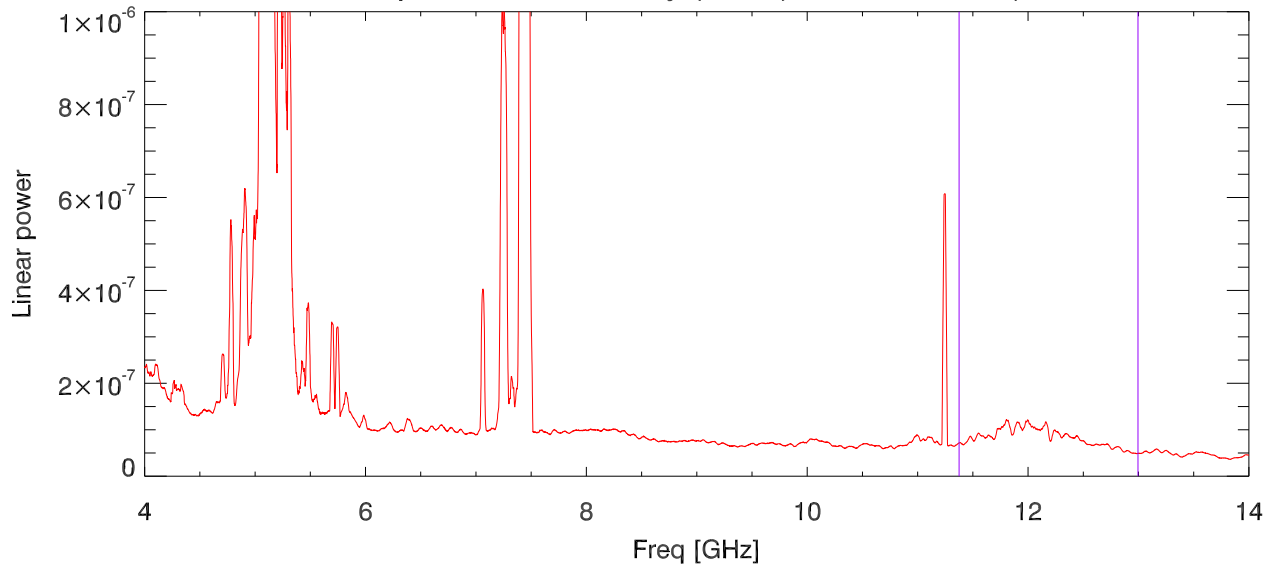
Tsky vs freq (from paulGoldsmiths plot)



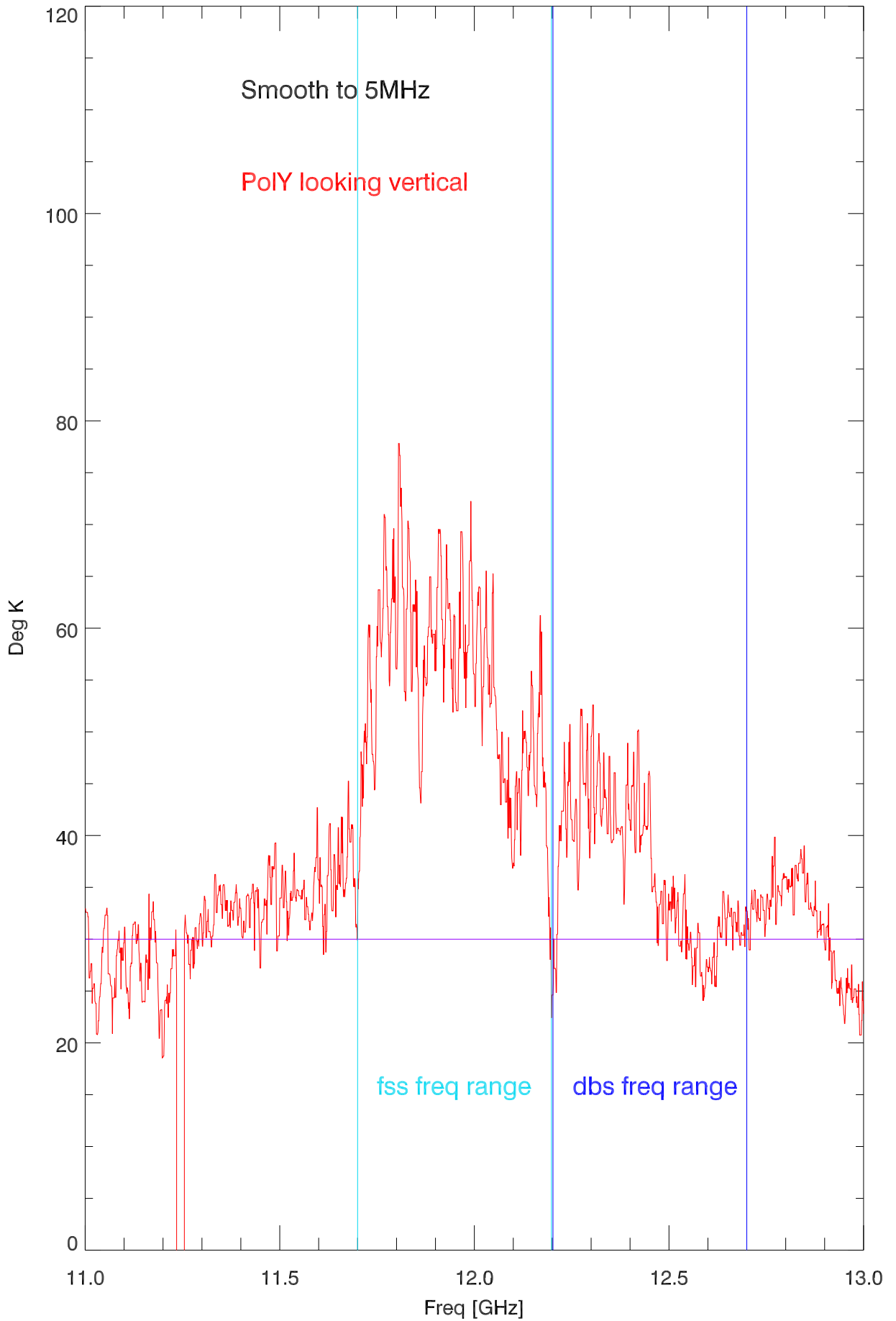
Flange temperature



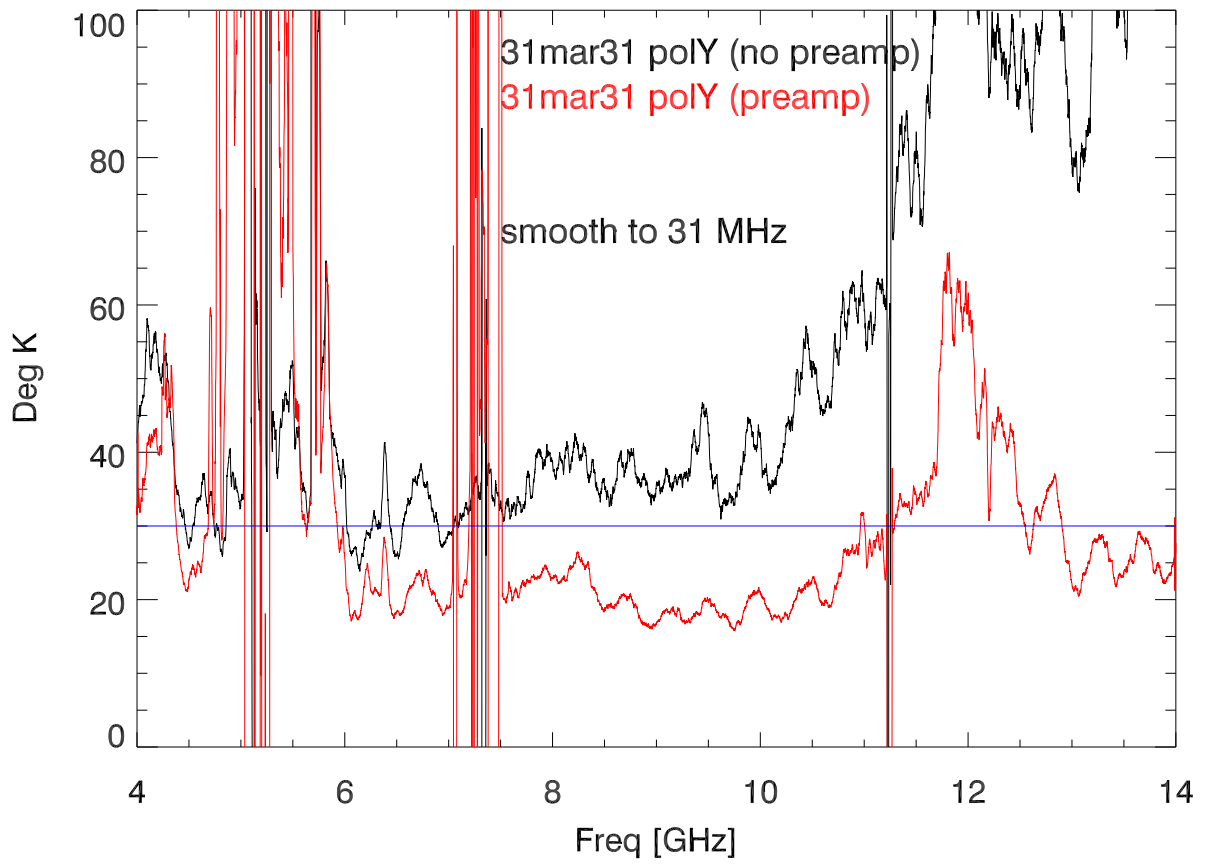
replot Power from sky (Tcold) measurements)



Blowup onsky Trcv 11-13 GHz



Compare Tflange postamp on,off



Blowup 11 to 13 GHz

