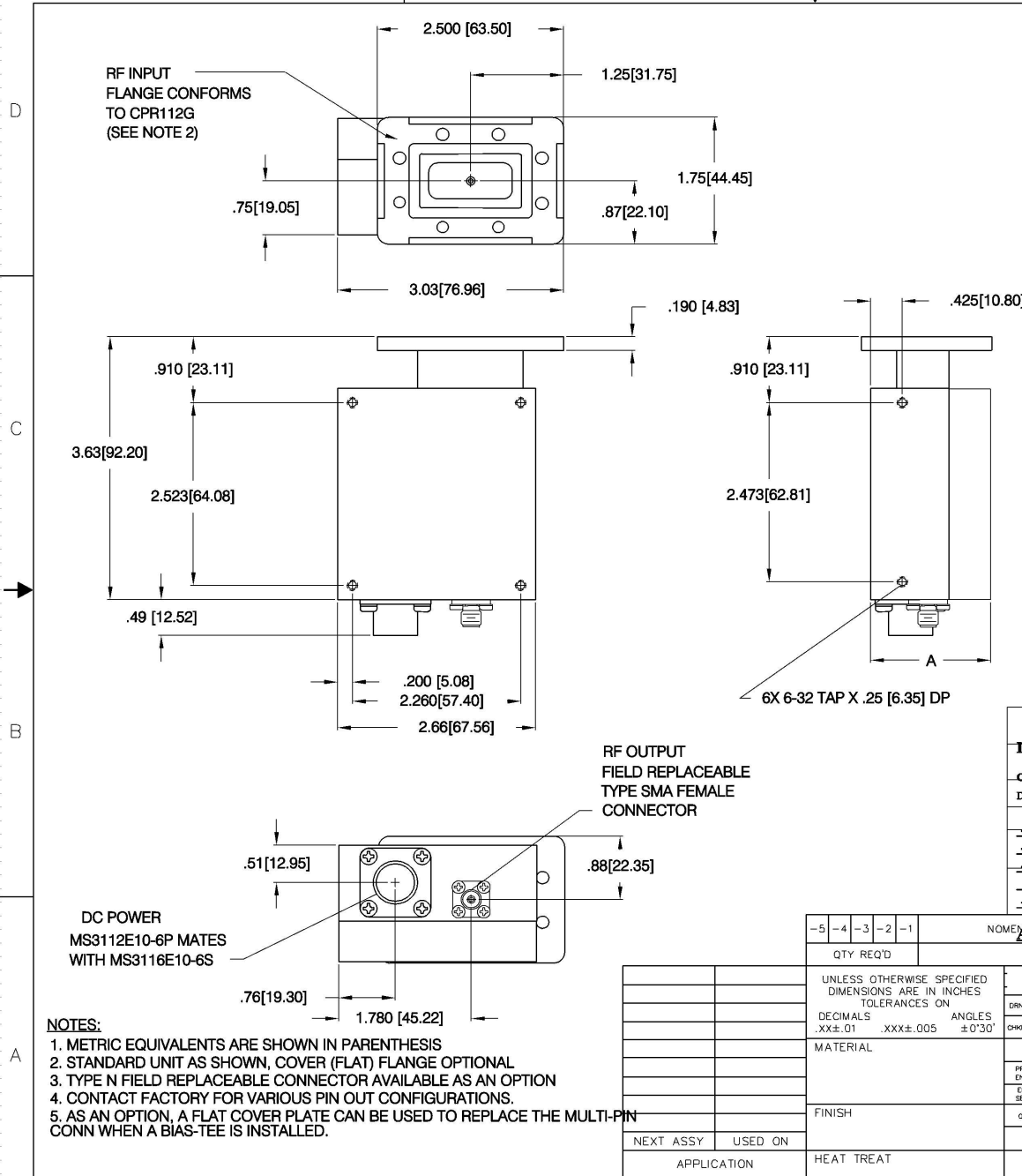


| REVISIONS | | | | |
|-----------|-----|-----------------------|----------|-----------|
| ZONE | LTR | DESCRIPTION | DATE | APPROVED |
| | E | Incorporated ECN 8836 | 07/18/08 | E. Piarra |



- NOTES:**
1. METRIC EQUIVALENTS ARE SHOWN IN PARENTHESIS
 2. STANDARD UNIT AS SHOWN, COVER (FLAT) FLANGE OPTIONAL
 3. TYPE N FIELD REPLACEABLE CONNECTOR AVAILABLE AS AN OPTION
 4. CONTACT FACTORY FOR VARIOUS PIN OUT CONFIGURATIONS.
 5. AS AN OPTION, A FLAT COVER PLATE CAN BE USED TO REPLACE THE MULTI-PIN CONN WHEN A BIAS-TEE IS INSTALLED.

| DASH NUMBER TABLE | | | |
|-------------------|--------------|-------------|--|
| OUTLINE | DASH NO. | DIM. SUFFIX | AMPLIFIER DESCRIPTION |
| -1 | 1.69 [42.69] | NONE | STANDARD LNA |
| -1 | 1.69 [42.69] | -F | LNA WITH OPTIONAL FAULT ALARM |
| -2 | 2.40 [60.96] | -O | LNA WITH OPTIONAL 100-240 VAC POWER SUPPLY |
| -2 | 2.40 [60.96] | -O, -F | LNA WITH OPTIONAL FAULT ALARM |

| QTY REQ'D | | NOMENCLATURE OR DESCRIPTION | | SYN. NOTES | | PART NO. | CODE IDENT. | ITEM NO. |
|--|----|-----------------------------|----|---|--|---|--------------|-----------------|
| -5 | -4 | -3 | -2 | -1 | | | | |
| PARTS LIST | | | | | | | | |
| UNLESS OTHERWISE SPECIFIED DIMENSIONS ARE IN INCHES TOLERANCES ON DECIMALS .XX±.01 .XXX±.005 ANGLES ±0°30' | | | | DRN BY: <i>KJ Boward</i> DATE: 05/11/01 CHD BY: <i>E. Piarra</i> DATE: 07/18/08 APPROVED BY: _____ PROJ ENGR: <i>John Sepulveda</i> DATE: 07/18/08 ENG SECT: _____ G.A.: _____ | | 100 Davids Drive, Hauppauge, New York 11788 OUTLINE X BAND CPR112G INTEGRATED AMPLIFIER | | |
| NEXT ASSY | | USED ON | | FINISH | | HEAT TREAT | SIZE | CODE IDENT. NO. |
| APPLICATION | | | | | | | C | 33592 |
| | | | | | | | | 138968 |
| | | | | | | | SCALE | REF |
| | | | | | | | | 45D219 |
| | | | | | | | SHEET 1 OF 1 | |